



## UK Office

### Everest Biotech Ltd

Cherwell Innovation Centre  
77 Heyford Park  
Upper Heyford  
Oxfordshire  
OX25 5HD  
UK

Enquiries:

[info@everestbiotech.com](mailto:info@everestbiotech.com)

Sales:

[sales@everestbiotech.com](mailto:sales@everestbiotech.com)

Tech support:

[support@everestbiotech.com](mailto:support@everestbiotech.com)

Tel: +44 (0)1869 238326

[www.everestbiotech.com](http://www.everestbiotech.com)

**Research Use Only. Not for  
diagnostic or therapeutic use.**

## EB06639 - Goat Anti-SRD5A2 / 5-alpha reductase 2 Antibody

Size: 100µg specific antibody in 200µl



### Target Protein

**Principal Names:** SRD5A2, steroid-5-alpha-reductase, alpha polypeptide 2 (3-oxo-5 alpha-steroid delta 4-dehydrogenase alpha 2), steroid 5-alpha-reductase 2, MGC138457, 3-oxo-5 alpha-steroid 4-dehydrogenase 2

**Official Symbol:** SRD5A2

**Accession Number(s):** NP\_000339.2

**Human GeneID(s):** [6716](#)

### Immunogen

Peptide with sequence QVQCQQSPVLAG, from the N Terminus of the protein sequence according to NP\_000339.2.

Please note the [peptide](#) is available for sale.

### Purification and Storage

Purified from goat serum by ammonium sulphate precipitation followed by antigen affinity chromatography using the immunizing peptide.

Supplied at 0.5 mg/ml in Tris saline, 0.02% sodium azide, pH7.3 with 0.5% bovine serum albumin.

Aliquot and store at -20°C. Minimize freezing and thawing.

### Applications Tested

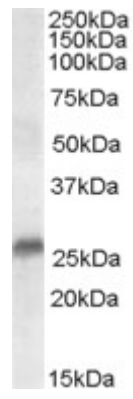
**Peptide ELISA:** antibody detection limit dilution 1:8000.

**Western blot:** Approx 26kDa band observed in Human Prostate and Breast lysates (calculated MW of 28.4kDa according to NP\_000339.2). Recommended concentration: 0.3-1µg/ml. Primary incubation was 1 hour.

### Species Reactivity

**Tested:** Human

**Expected from sequence similarity:** Human



EB06639 (0.3 $\mu$ g/ml) staining of Human Prostate lysate (35 $\mu$ g protein in RIPA buffer). Detected by chemiluminescence.