



UK Office

Everest Biotech Ltd

Cherwell Innovation Centre
77 Heyford Park
Upper Heyford
Oxfordshire
OX25 5HD
UK

Enquiries:

info@everestbiotech.com

Sales:

sales@everestbiotech.com

Tech support:

support@everestbiotech.com

Tel: +44 (0)1869 238326

Fax: +44 (0)1869 238327

US Office

Everest Biotech c/o Abcore

405 Maple Street, Suite A106
Ramona,
CA 92065
USA

Inquiries:

info@everestbiotech.com

Sales:

usasales@everestbiotech.com

Tech support:

support@everestbiotech.com

Tel: 888-320-4628 (toll-free)

Fax: 888-841-9041

www.everestbiotech.com

**Research Use Only. Not for
diagnostic or therapeutic use.**

EB09543 - Goat Anti-SRF Antibody

Size: 100µg specific antibody in 200µl



Target Protein

Principal Names: SRF, serum response factor (c-fos serum response element-binding transcription factor), MCM1, OTTHUMP00000039820

Official Symbol: SRF

Accession Number(s): NP_003122.1

Human GeneID(s): [6722](#)

Non-Human GeneID(s): 20807 (mouse), 501099 (rat)

Immunogen

Peptide with sequence C-QASPSRDSSTDLTQ, from the internal region of the protein sequence according to NP_003122.1.

Please note the [peptide](#) is available for sale.

Purification and Storage

Purified from goat serum by ammonium sulphate precipitation followed by antigen affinity chromatography using the immunizing peptide.

Supplied at 0.5 mg/ml in Tris saline, 0.02% sodium azide, pH7.3 with 0.5% bovine serum albumin.

Aliquot and store at -20°C. Minimize freezing and thawing.

Applications Tested

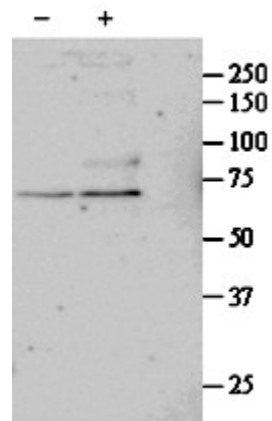
Peptide ELISA: antibody detection limit dilution 1:32000.

Western blot: Approx 67kDa band observed in primary cultured Human Lung fibroblasts lysates after 24 h treatment with 1ng/ml TGF-β1 (calculated MW of 51.6kDa according to NP_003122.1). The observed molecular weight corresponds to earlier findings in literature with different antibodies (Davis FJ et al, Am J Physiol Heart Circ Physiol. 2002 Apr;282(4):H1521-33.; PMID: 11893590). Recommended concentration: 1-3µg/ml.

Species Reactivity

Tested: Human

Expected from sequence similarity: Human, Mouse, Dog, Cow



EB09543 (1 μ g/ml) staining of untreated (first lane) and TGF- β 1-treated (second lane) primary cultured Human Lung fibroblast lysate. Primary incubated overnight at 4C. Detected by western blot using chemiluminescence. Data kindly provided by Nickolai Dulin, Dept Medicine/Pulmonary, Chicago, USA.