



International Office

Everest Biotech Ltd

Vector Laboratories, Inc.
6737 Mowry Ave
Newark, CA 94560
United States

Customer Service:

customerservice@vectorlabs.com

Technical Service:

technical@vectorlabs.com

Tel: +1 (800) 227-6666

www.everestbiotech.com

**Research Use Only. Not for
diagnostic or therapeutic use.**

EB12143 - Goat Anti-SRRT / ARS2 Antibody

Size: 100µg specific antibody in 200µl



Target Protein

Principal Names: SRRT, serrate RNA effector molecule homolog (Arabidopsis), ARS2, ASR2, serrate, arsenate resistance protein 2, arsenate resistance protein ARS2, arsenite resistance protein, arsenite-resistance protein 2, serrate RNA effector molecule homolog

Official Symbol: SRRT

Accession Number(s): NP_056992.4; NP_001122324.1; NP_001122325.1; NP_001122326.1

Human GeneID(s): [51593](#)

Non-Human GeneID(s): 83701 (mouse), 686980 (rat)

Important Comments: This antibody is expected to recognize all reported isoform (NP_056992.4; NP_001122324.1; NP_001122325.1; NP_001122326.1).

Immunogen

Peptide with sequence C-DPRAIVEYRDLDPD, from the C Terminus of the protein sequence according to NP_056992.4; NP_001122324.1; NP_001122325.1; NP_001122326.1.

Please note the [peptide](#) is available for sale.

Purification and Storage

Purified from goat serum by ammonium sulphate precipitation followed by antigen affinity chromatography using the immunizing peptide.

Supplied at 0.5 mg/ml in Tris saline, 0.02% sodium azide, pH7.3 with 0.5% bovine serum albumin.

Aliquot and store at -20°C. Minimize freezing and thawing.

Applications Tested

Peptide ELISA: antibody detection limit dilution 1:128000.

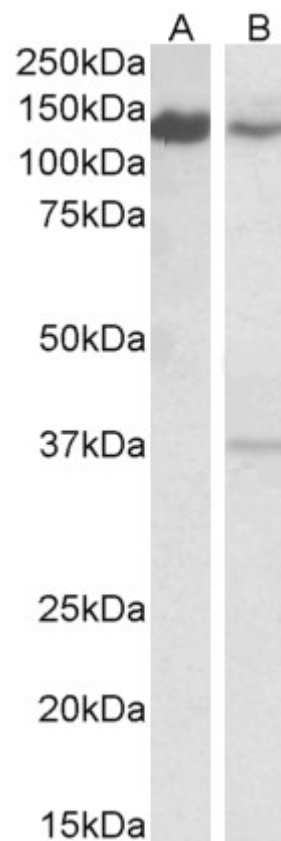
Western blot: Approx 140kDa band observed in lysates of cell line Daudi and of Mouse Spleen, and approx 150kDa band observed in lysates of Rat Testis (calculated MW of 101kDa according to Human NP_056992.4, 100kDa according to Mouse NP_113582.1 and 88.4kDa according to Rat XP_006221478.1). The observed molecular weight is explained by the acetylation of the protein and it corresponds to earlier findings from sources. An additional band of unknown identity was also consistently observed at 37kDa in Mouse Spleen. This band was successfully blocked by incubation with the immunizing peptide. Primary incubation was 1 hour.

IHC: Paraffin embedded Human Uterus. Recommended concentration: 5µg/ml.

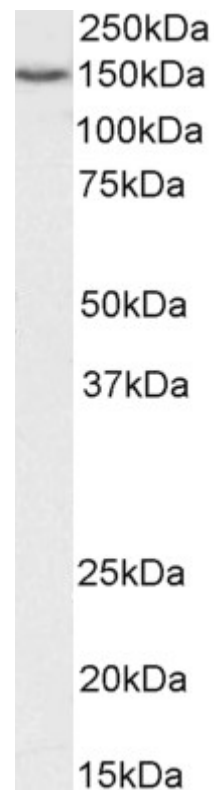
Species Reactivity

Tested: Human, Mouse, Rat

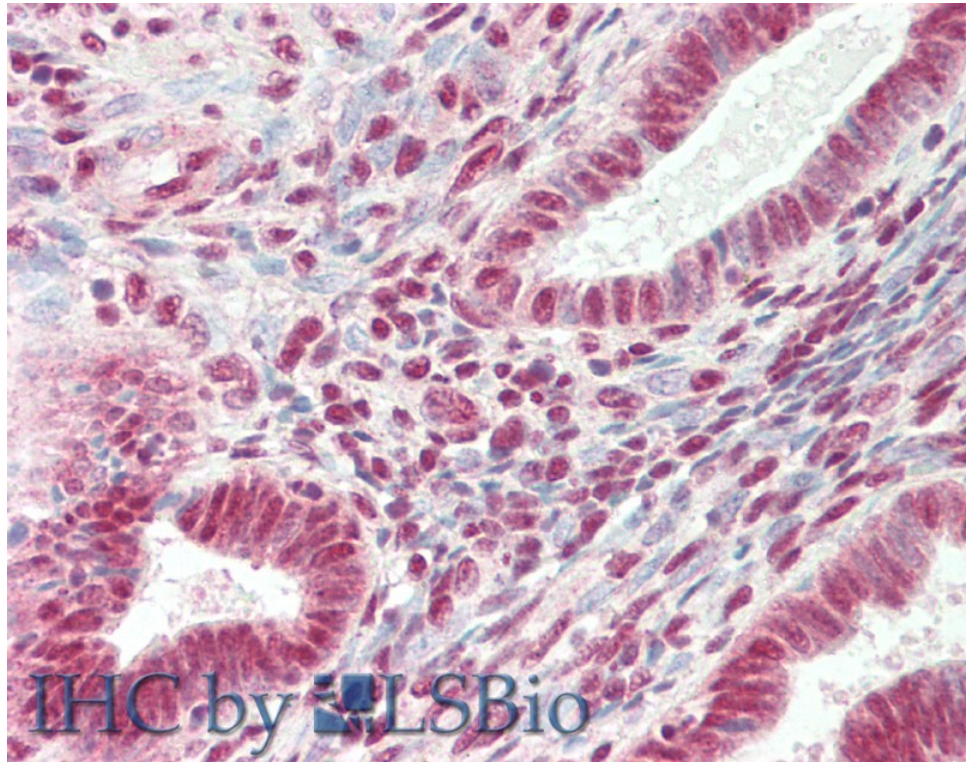
Expected from sequence similarity: Human, Mouse, Rat, Dog, Pig, Cow



EB12143 (0.1µg/ml) staining of Daudi (A) and Mouse Spleen (B) lysates (35µg protein in RIPA buffer). Detected by chemiluminescence.



EB12143 (0.1µg/ml) staining of Rat Testis lysate (35µg protein in RIPA buffer). Detected by chemiluminescence.



EB12143 (5µg/ml) staining of paraffin embedded Human Uterus. Steamed antigen retrieval with citrate buffer pH 6, AP-staining.