

UK Office

Everest Biotech Ltd

Cherwell Innovation Centre
77 Heyford Park
Upper Heyford
Oxfordshire
OX25 5HD
UK

Enquiries:

info@everestbiotech.com

Sales:

sales@everestbiotech.com

Tech support:

support@everestbiotech.com

Tel: +44 (0)1869 238326

www.everestbiotech.com

**Research Use Only. Not for
diagnostic or therapeutic use.**

EB07813 - Goat Anti-STAG2 Antibody

Size: 100µg specific antibody in 200µl



Target Protein

Principal Names: STAG2, stromal antigen 2, RP11-517O1.1, DKFZp686P168, DKFZp781H1753, FLJ25871, SA-2, SA2, bA517O1.1, SCC3 homolog 2

Official Symbol: STAG2

Accession Number(s): NP_001036214.1; NP_001036215.1 ; NP_001036216.1 ; NP_006594.3

Human GeneID(s): [10735](#)

Non-Human GeneID(s): 20843 (mouse)

Important Comments: This antibody is expected to recognise isoform a (NP_001036214.1 and NP_001036215.1) and isoform b (NP_001036216.1 and NP_006594.3).

Immunogen

Peptide with sequence C-REPKRLRPEDS, from the internal region of the protein sequence according to NP_001036214.1; NP_001036215.1 ; NP_001036216.1 ; NP_006594.3.

Please note the [peptide](#) is available for sale.

Purification and Storage

Purified from goat serum by ammonium sulphate precipitation followed by antigen affinity chromatography using the immunizing peptide.

Supplied at 0.5 mg/ml in Tris saline, 0.02% sodium azide, pH7.3 with 0.5% bovine serum albumin.

Aliquot and store at -20°C. Minimize freezing and thawing.

Applications Tested

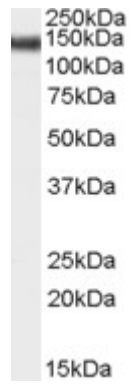
Peptide ELISA: antibody detection limit dilution 1:128000.

Western blot: Approx 150kDa band observed in lysates of cell line HeLa (calculated MW of 146kDa according to NP_001036214.1 and NP_001036215.1). Recommended concentration: 0.01µg/ml.

Species Reactivity

Tested: Human

Expected from sequence similarity: Human, Mouse, Rat, Dog



EB07813 (0.01 μ g/ml) staining of HeLa cell lysate (35 μ g protein in RIPA buffer). Primary incubation was 1 hour.
Detected by chemiluminescence.