



UK Office

Everest Biotech Ltd

Cherwell Innovation Centre
77 Heyford Park
Upper Heyford
Oxfordshire
OX25 5HD
UK

Enquiries:

info@everestbiotech.com

Sales:

sales@everestbiotech.com

Tech support:

support@everestbiotech.com

Tel: +44 (0)1869 238326

www.everestbiotech.com

**Research Use Only. Not for
diagnostic or therapeutic use.**

EB07212 - Goat Anti-STAM1 Antibody

Size: 100µg specific antibody in 200µl



Target Protein

Principal Names: STAM, signal transducing adaptor molecule (SH3 domain and ITAM motif) 1, HGNC:11357, STAM1, signal transducing adaptor molecule 1

Official Symbol: STAM

Accession Number(s): NP_003464.1; NP_001311216.1; NP_001311212.1; NP_001311215.1; NP_001311211.1;; NP_001311217.1

Human GeneID(s): [8027](#)

Important Comments: This antibody is expected to recognize isoforms a-f. No cross-reactivity expected with STAM2.

Immunogen

Peptide with sequence C-KTEKKTQFSDS, from the internal region of the protein sequence according to NP_003464.1; NP_001311216.1; NP_001311212.1; NP_001311215.1; NP_001311211.1;; NP_001311217.1.

Please note the [peptide](#) is available for sale.

Purification and Storage

Purified from goat serum by ammonium sulphate precipitation followed by antigen affinity chromatography using the immunizing peptide.

Supplied at 0.5 mg/ml in Tris saline, 0.02% sodium azide, pH7.3 with 0.5% bovine serum albumin.

Aliquot and store at -20°C. Minimize freezing and thawing.

Applications Tested

Peptide ELISA: antibody detection limit dilution 1:16000.

Western blot: Approx. 60kDa band observed in lysates of cell line K562, and approx. 55kDa in lysates of cell line MCF7, (calculated MW of 59.2kDa according to NP_003464.1 and 55.7kDa according to NP_001311211.1). Recommended concentration: 0.3-1µg/ml. Primary incubation 1 hour at room temperature.

IHC: Paraffin embedded Human Testis. Recommended concentration: 4-6µg/ml.

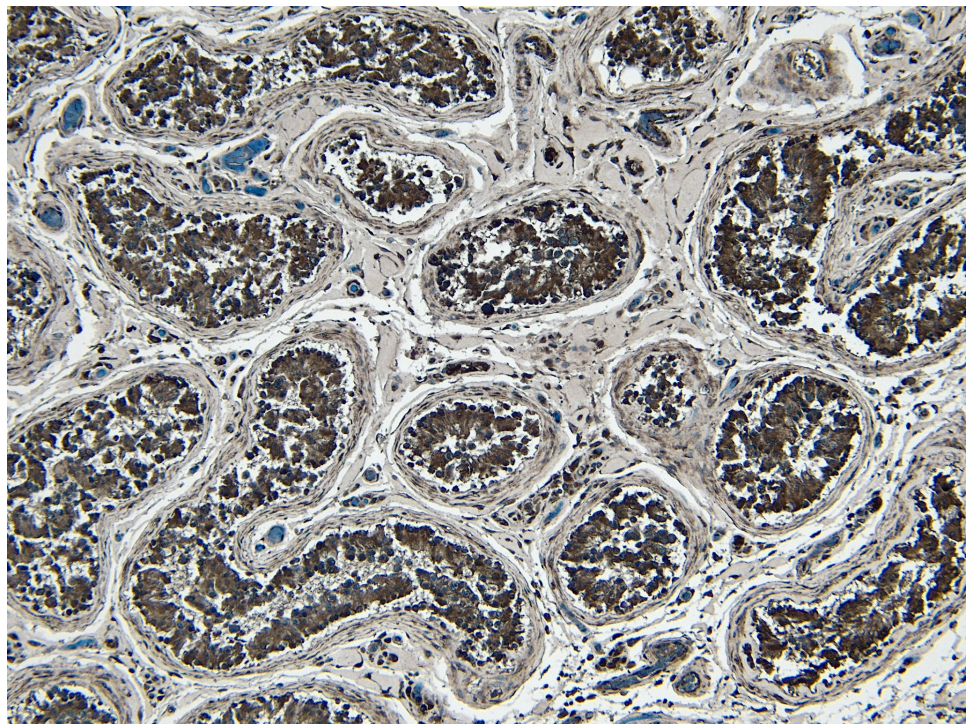
Species Reactivity

Tested: Human

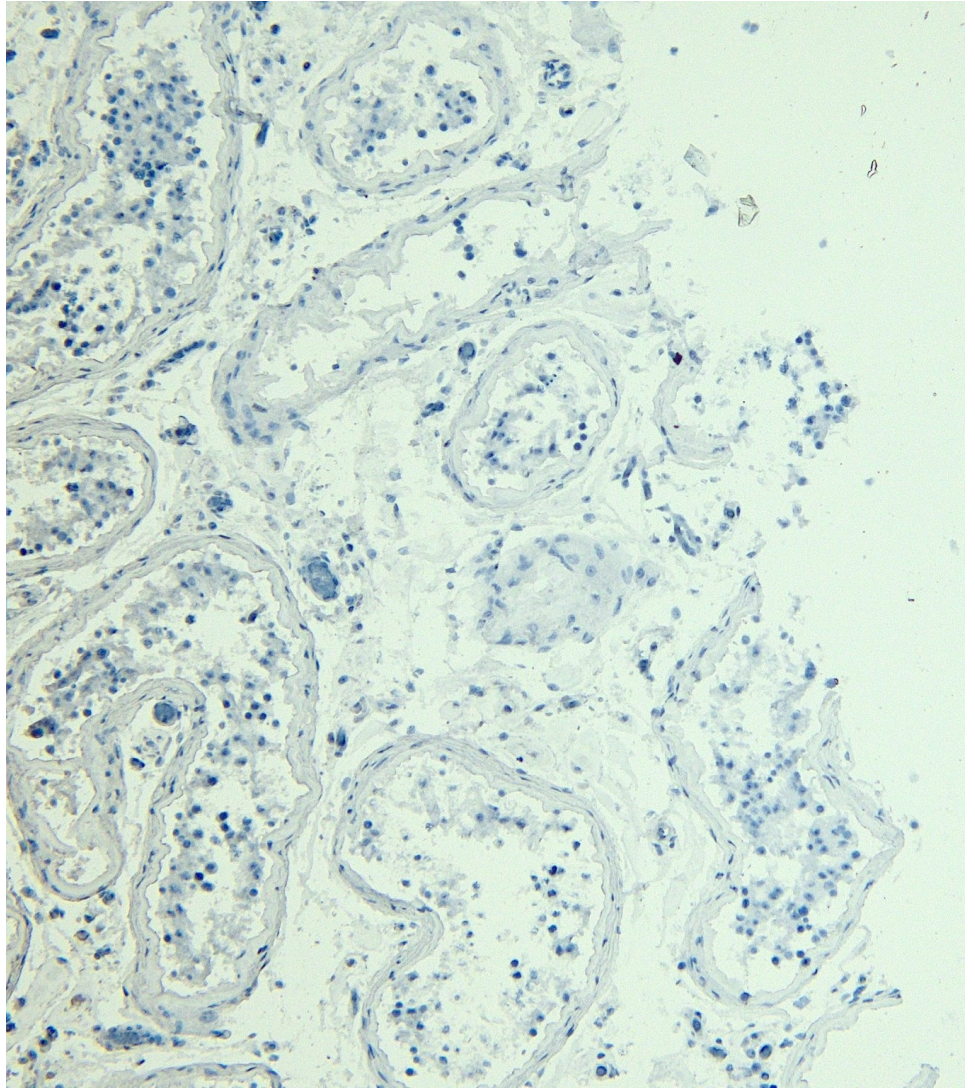
Expected from sequence similarity: Human, Mouse, Rat, Dog



EB07212 (1 μ g/ml) staining of K562 (A) and (0.5 μ g/ml) MCF7 (B) cell lysate (35 μ g protein in RIPA buffer). Detected by chemiluminescence.



EB07212 (6 μ g/ml) staining of paraffin embedded Human Testis. Heat induced antigen retrieval with citrate buffer pH 6, HRP-staining.



EB07212 Negative Control showing staining of paraffin embedded Human Testis, with no primary antibody.