



UK Office

Everest Biotech Ltd

Cherwell Innovation Centre
77 Heyford Park
Upper Heyford
Oxfordshire
OX25 5HD
UK

Enquiries:

info@everestbiotech.com

Sales:

sales@everestbiotech.com

Tech support:

support@everestbiotech.com

Tel: +44 (0)1869 238326

Fax: +44 (0)1869 238327

US Office

Everest Biotech c/o Abcore

405 Maple Street, Suite A106
Ramona,
CA 92065
USA

Inquiries:

info@everestbiotech.com

Sales:

usasales@everestbiotech.com

Tech support:

support@everestbiotech.com

Tel: 888-320-4628 (toll-free)

Fax: 888-841-9041

www.everestbiotech.com

**Research Use Only. Not for
diagnostic or therapeutic use.**

EB07213 - Goat Anti-STAM2 Antibody

Size: 100µg specific antibody in 200µl



Target Protein

Principal Names: STAM2, signal transducing adaptor molecule (SH3 domain and ITAM motif) 2, HGNC:11358, DKFZp564C047, Hbp, STAM2A, STAM2B, STAM-like protein containing SH3 and ITAM domains 2, signal transducing adaptor molecule 2

Official Symbol: STAM2

Accession Number(s): NP_005834.3

Human GeneID(s): [10254](#)

Non-Human GeneID(s): 56324 (mouse)

Important Comments: No cross-reaction expected with STAM1.

Immunogen

Peptide with sequence C-QSIDPTDSKPDSQD, from the internal region of the protein sequence according to NP_005834.3.

Please note the [peptide](#) is available for sale.

Purification and Storage

Purified from goat serum by ammonium sulphate precipitation followed by antigen affinity chromatography using the immunizing peptide.

Supplied at 0.5 mg/ml in Tris saline, 0.02% sodium azide, pH7.3 with 0.5% bovine serum albumin.

Aliquot and store at -20°C. Minimize freezing and thawing.

Applications Tested

Peptide ELISA: antibody detection limit dilution 1:8000.

Western blot: Approx 70kDa band observed in Human Spleen lysates and in preliminary testing of HeLa cell lysate (calculated MW of 58.2kDa according to NP_005834.3). This molecular weight is routinely observed by other sources. Recommended concentration: 1-3µg/ml.. Primary incubation 1 hour at room temperature.

Flow Cytometry: Flow cytometric analysis of K562 and HeLa cells. Recommended concentration: 10ug/ml.

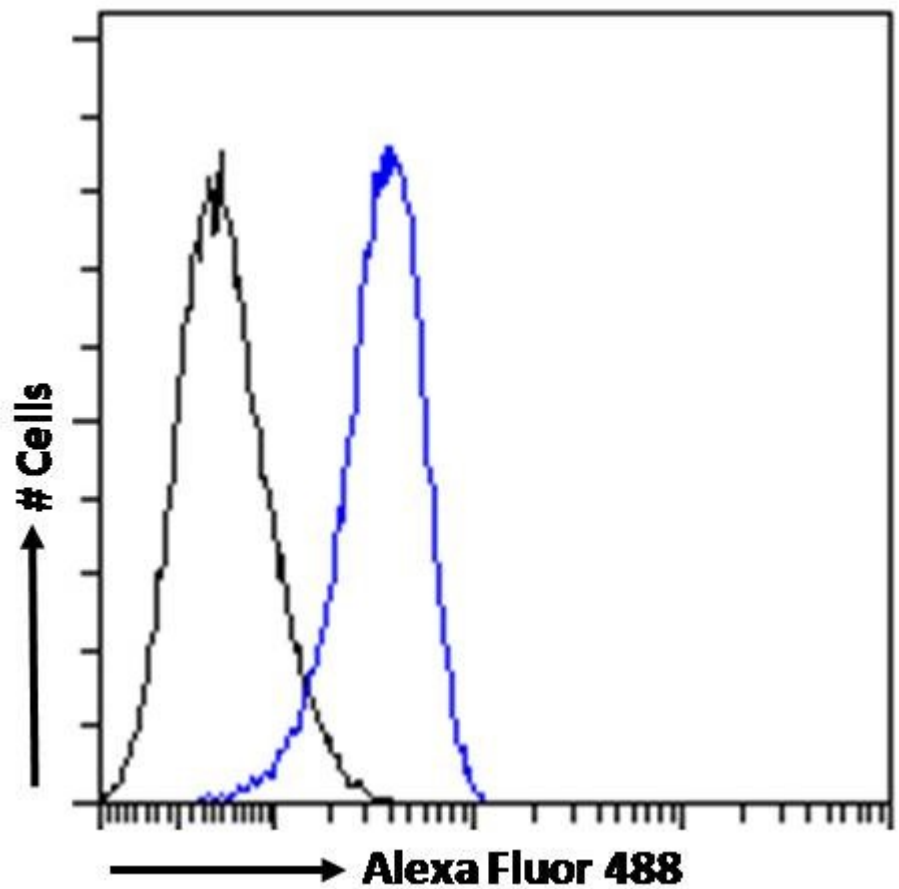
Species Reactivity

Tested: Human

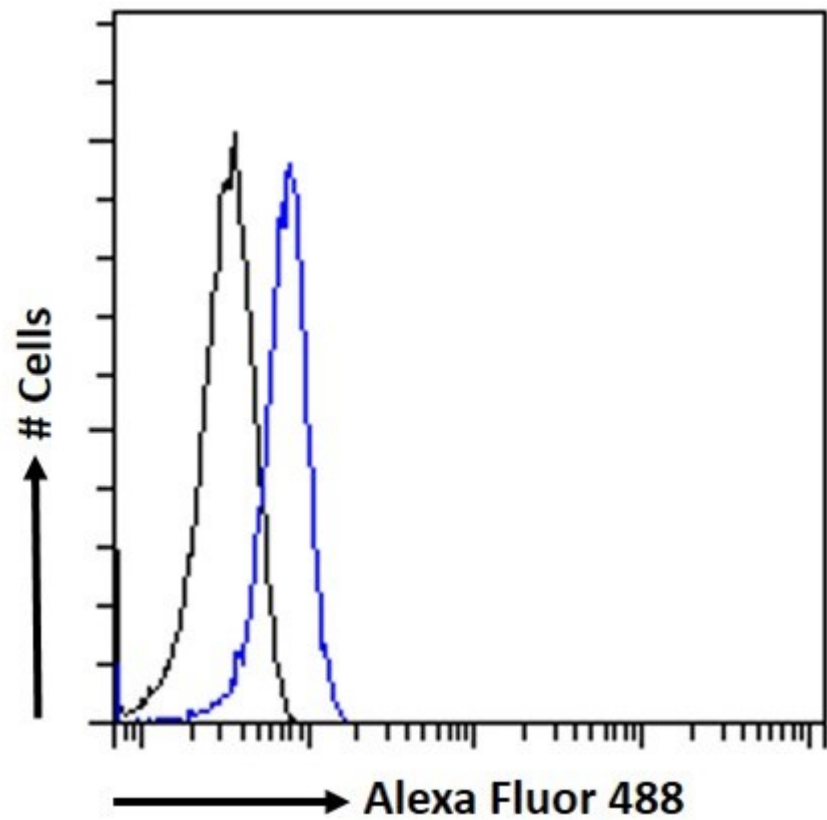
Expected from sequence similarity: Human, Mouse, Dog, Cow



EB07213 (1 μ g/ml) staining of Human Spleen lysate (35 μ g protein in RIPA buffer). Detected by chemiluminescence.



EB07213 Flow cytometric analysis of paraformaldehyde fixed K562 cells (blue line), permeabilized with 0.5% Triton. Primary incubation 1hr (10 μ g/ml) followed by Alexa Fluor 488 secondary antibody (1 μ g/ml). IgG control: Unimmunized goat IgG (black line) followed by Alexa Fluor 488 secondary antibody.



EB07213 Flow cytometric analysis of paraformaldehyde fixed HeLa cells (blue line), permeabilized with 0.5% Triton. Primary incubation 1hr (10ug/ml) followed by Alexa Fluor 488 secondary antibody (1ug/ml). IgG control: Unimmunized goat IgG (black line) followed by Alexa Fluor 488 secondary antibody.