



International Office

Everest Biotech Ltd

Vector Laboratories, Inc.
6737 Mowry Ave
Newark, CA 94560
United States

Customer Service:

customerservice@vectorlabs.com

Technical Service:

technical@vectorlabs.com

Tel: +1 (800) 227-6666

www.everestbiotech.com

**Research Use Only. Not for
diagnostic or therapeutic use.**

EB05074 - Goat Anti-STAP2 / BKS (aa391-403) Antibody

Size: 100µg specific antibody in 200µl



Target Protein

Principal Names: STAP2, signal transducing adaptor family member 2, BKS, FLJ20234, brk kinase substrate, BRK substrate, breast tumor kinase substrate, brk kinase substrate, signal-transducing adaptor protein 2, signal-transducing adaptor protein-2

Official Symbol: STAP2

Accession Number(s): NP_060190.2; NP_001013863.1

Human GeneID(s): [55620](#)

Important Comments: This antibody is expected to recognize isoform 1 (NP_060190.2) and isoform 2 (NP_001013863.1).

Immunogen

Peptide with sequence C-LQKKLEKRRALEH, from the C Terminus of the protein sequence according to NP_060190.2; NP_001013863.1.

Please note the [peptide](#) is available for sale.

Purification and Storage

Purified from goat serum by ammonium sulphate precipitation followed by antigen affinity chromatography using the immunizing peptide.

Supplied at 0.5 mg/ml in Tris saline, 0.02% sodium azide, pH7.3 with 0.5% bovine serum albumin.

Aliquot and store at -20°C. Minimize freezing and thawing.

Applications Tested

Peptide ELISA: antibody detection limit dilution 1:128000.

Western blot: Approx 49kDa band observed in Human Breast lysates (calculated MW of 49.6kDa according to NP_060190.2). Recommended concentration: 0.3-1µg/ml.

IHC: Paraffin embedded Human Small Intestine. Recommended concentration: 3.75µg/ml.

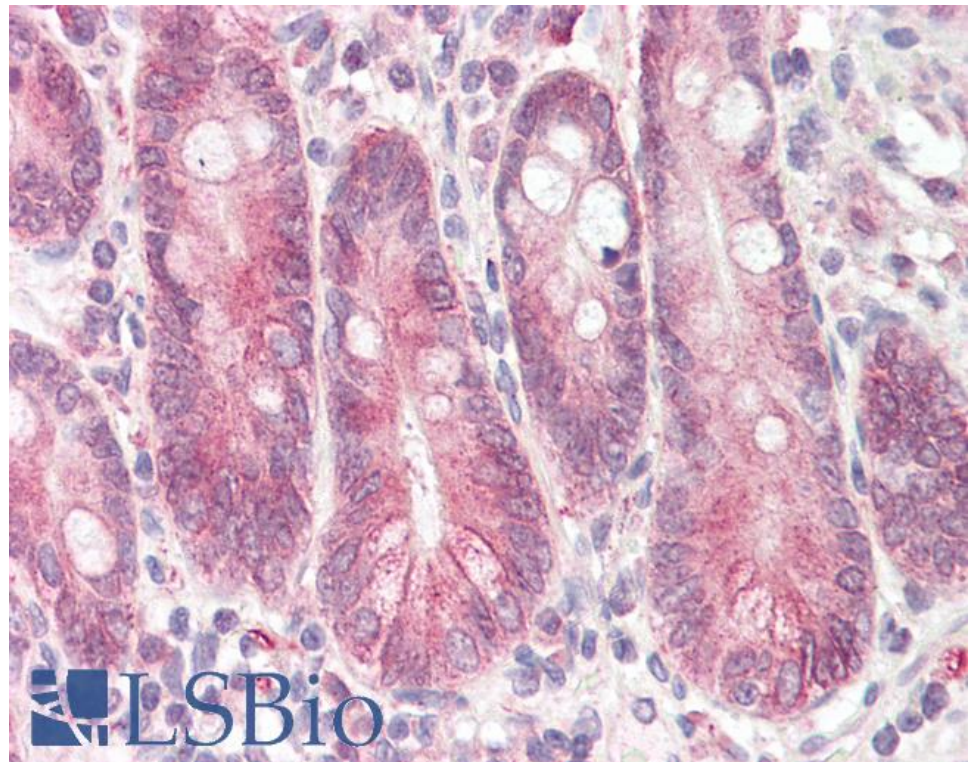
Species Reactivity

Tested: Human

Expected from sequence similarity: Human



EB05074 (0.3 μ g/ml) staining of Human Breast lysate (35 μ g protein in RIPA buffer). Primary incubation was 1 hour. Detected by chemiluminescence.



EB05074 (3.75 μ g/ml) staining of paraffin embedded Human Small Intestine. Steamed antigen retrieval with citrate buffer pH 6, AP-staining.