



UK Office

Everest Biotech Ltd

Cherwell Innovation Centre
77 Heyford Park
Upper Heyford
Oxfordshire
OX25 5HD
UK

Enquiries:

info@everestbiotech.com

Sales:

sales@everestbiotech.com

Tech support:

support@everestbiotech.com

Tel: +44 (0)1869 238326

Fax: +44 (0)1869 238327

US Office

Everest Biotech c/o Abcore

405 Maple Street, Suite A106
Ramona,
CA 92065
USA

Inquiries:

info@everestbiotech.com

Sales:

usasales@everestbiotech.com

Tech support:

support@everestbiotech.com

Tel: 888-320-4628 (toll-free)

Fax: 888-841-9041

www.everestbiotech.com

**Research Use Only. Not for
diagnostic or therapeutic use.**

EB07379-T - Goat Anti-STAT3 Antibody - Trial

Size: 20µg specific antibody in 40µl



Target Protein

Principal Names: STAT3, signal transducer and activator of transcription 3 (acute-phase response factor), APRF, FLJ20882, MGC16063, DNA-binding protein APRF, acute-phase response factor, signal transducer and activator of transcription 3

Official Symbol: STAT3

Accession Number(s): NP_644805.1; NP_003141.2; NP_998827.1

Human GeneID(s): [6774](#)

Non-Human GeneID(s): 20848 (mouse), 25125 (rat)

Important Comments: This antibody is expected to recognise all three reported isoforms (NP_644805.1, NP_003141.2 and NP_998827.1).

Immunogen

Peptide with sequence CRPESQEHPEADP, from the internal region of the protein sequence according to NP_644805.1; NP_003141.2; NP_998827.1.

Please note the [peptide](#) is available for sale.

Purification and Storage

Purified from goat serum by ammonium sulphate precipitation followed by antigen affinity chromatography using the immunizing peptide.

Supplied at 0.5 mg/ml in Tris saline, 0.02% sodium azide, pH7.3 with 0.5% bovine serum albumin.

Aliquot and store at -20°C. Minimize freezing and thawing.

Applications Tested

Peptide ELISA: antibody detection limit dilution 1:16000.

Western blot: Approx 85kDa band observed in lysates of cell line LNCaP, and approx. 90kDa in Mouse Heart lysates (calculated MW of 83.1kDa according to Human NP_998827.1 and 88.1kDa according to Mouse : NP_998824.1). Recommended concentration: 0.5-3µg/ml. Primary incubation 1 hour. at room temperature.

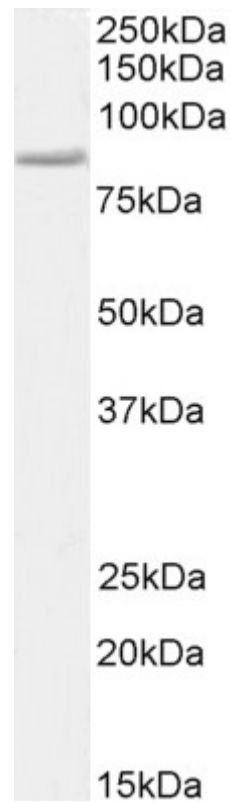
IHC: Paraffin embedded Human Kidney. Recommended concentration: 5µg/ml.

Flow Cytometry: Flow cytometric analysis of K562 cells. Recommended concentration: 10µg/ml

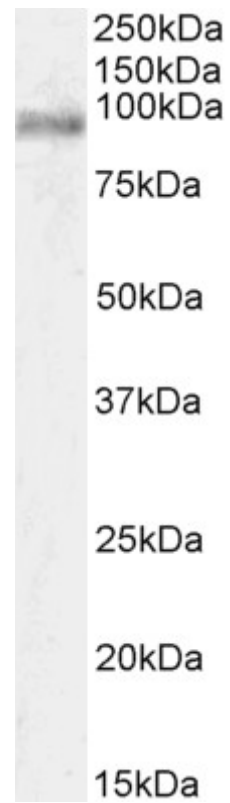
Species Reactivity

Tested: Human, Mouse

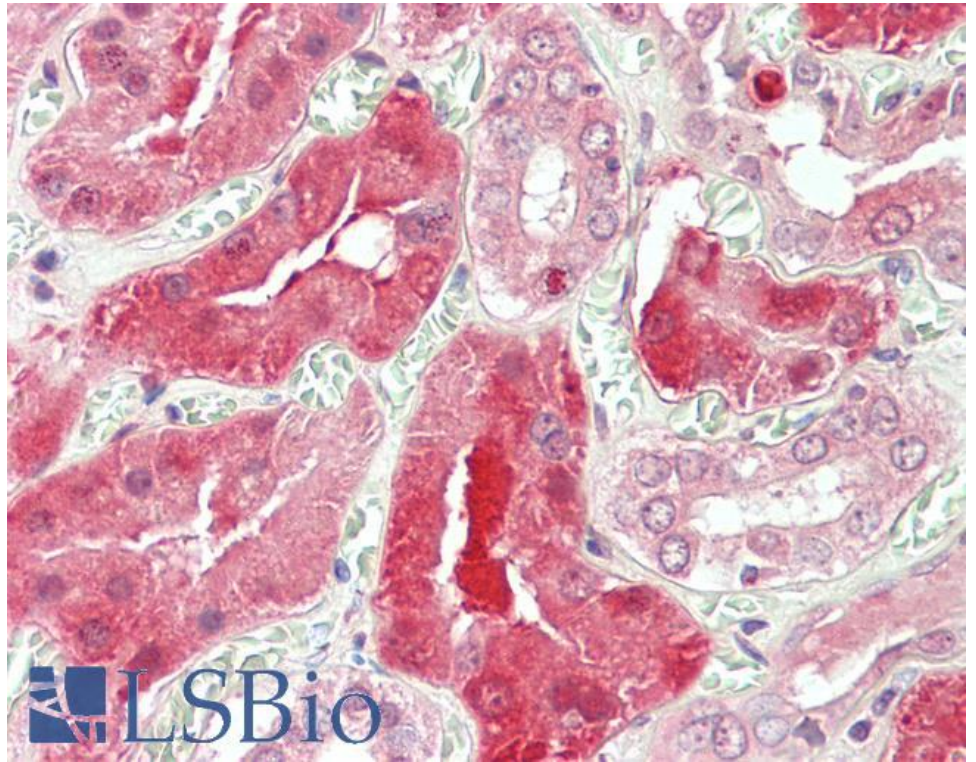
Expected from sequence similarity: Human, Mouse, Rat, Dog



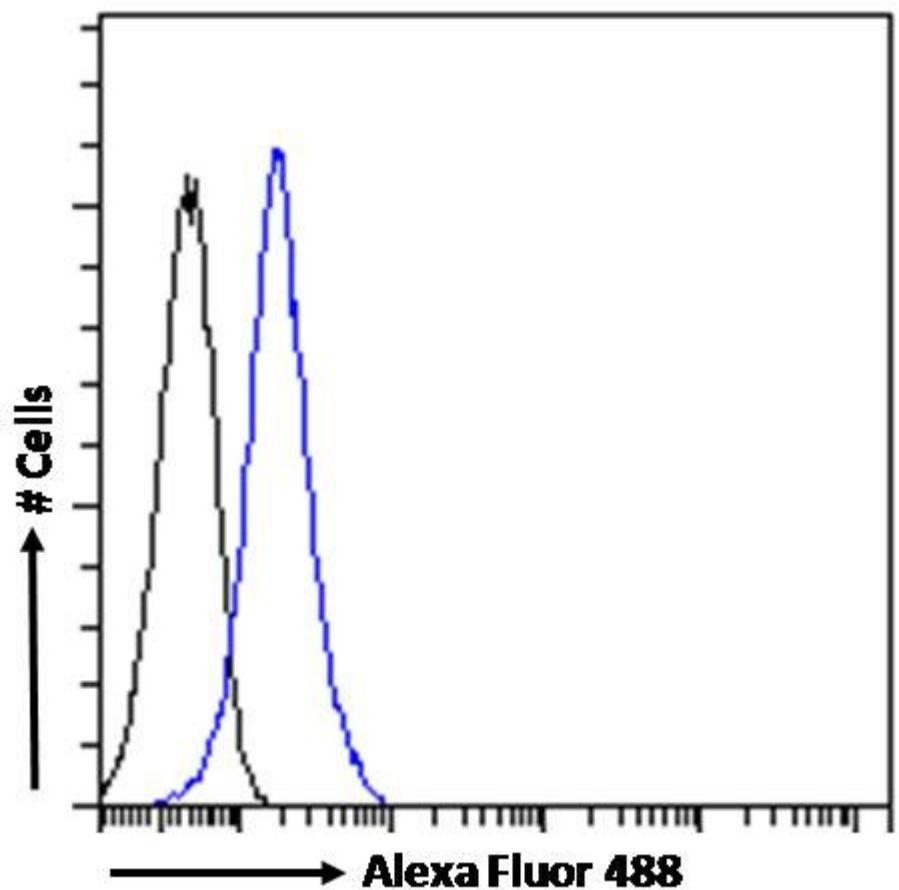
EB07379 (3 μ g/ml) staining of LNCaP cell lysate (35 μ g protein in RIPA buffer). Detected by chemiluminescence.



EB07379 (0.5 μ g/ml) staining of Mouse Heart lysate (35 μ g protein in RIPA buffer). Detected by chemiluminescence.



EB07379 (5µg/ml) staining of paraffin embedded Human Kidney. Steamed antigen retrieval with citrate buffer pH 6, AP-staining.



EB07379 Flow cytometric analysis of paraformaldehyde fixed K562 cells (blue line), permeabilized with 0.5% Triton. Primary incubation 1hr (10ug/ml) followed by Alexa Fluor 488 secondary antibody (1ug/ml). IgG control: Unimmunized goat IgG (black line) followed by Alexa Fluor 488 secondary antibody.