



## UK Office

### Everest Biotech Ltd

Cherwell Innovation Centre  
77 Heyford Park  
Upper Heyford  
Oxfordshire  
OX25 5HD  
UK

Enquiries:

[info@everestbiotech.com](mailto:info@everestbiotech.com)

Sales:

[sales@everestbiotech.com](mailto:sales@everestbiotech.com)

Tech support:

[support@everestbiotech.com](mailto:support@everestbiotech.com)

Tel: +44 (0)1869 238326

[www.everestbiotech.com](http://www.everestbiotech.com)

**Research Use Only. Not for  
diagnostic or therapeutic use.**

## EB05073 - Goat Anti-STAT3 (isoform 1 and 2) Antibody

Size: 100µg specific antibody in 200µl



### Target Protein

**Principal Names:** STAT3, signal transducer and activator of transcription 3 (acute-phase response factor), APRF, DNA-binding protein APRF, acute-phase response factor, FLJ20882, MGC16063, HIES

**Official Symbol:** STAT3

**Accession Number(s):** NP\_003141.2; NP\_644805.1

**Human GeneID(s):** [6774](#)

**Non-Human GeneID(s):** 20848 (mouse), 25125 (rat)

**Important Comments:** This antibody is expected to recognise isoforms 1 and 2 (as represented by NP\_644805.1 and NP\_003141.2 respectively)

### Immunogen

Peptide with sequence DMELTSECATSPM, from the C Terminus of the protein sequence according to NP\_003141.2; NP\_644805.1.

Please note the [peptide](#) is available for sale.

### Purification and Storage

Purified from goat serum by ammonium sulphate precipitation followed by antigen affinity chromatography using the immunizing peptide.

Supplied at 0.5 mg/ml in Tris saline, 0.02% sodium azide, pH7.3 with 0.5% bovine serum albumin.

Aliquot and store at -20°C. Minimize freezing and thawing.

### Applications Tested

**Peptide ELISA:** antibody detection limit dilution 1:16000.

**IHC:** Paraffin embedded Human Liver. Recommended concentration: 6-7µg/ml.

**Immunofluorescence:** Strong expression of the protein seen in the Golgi and cytoplasm of HeLa and A431 cells. Recommended

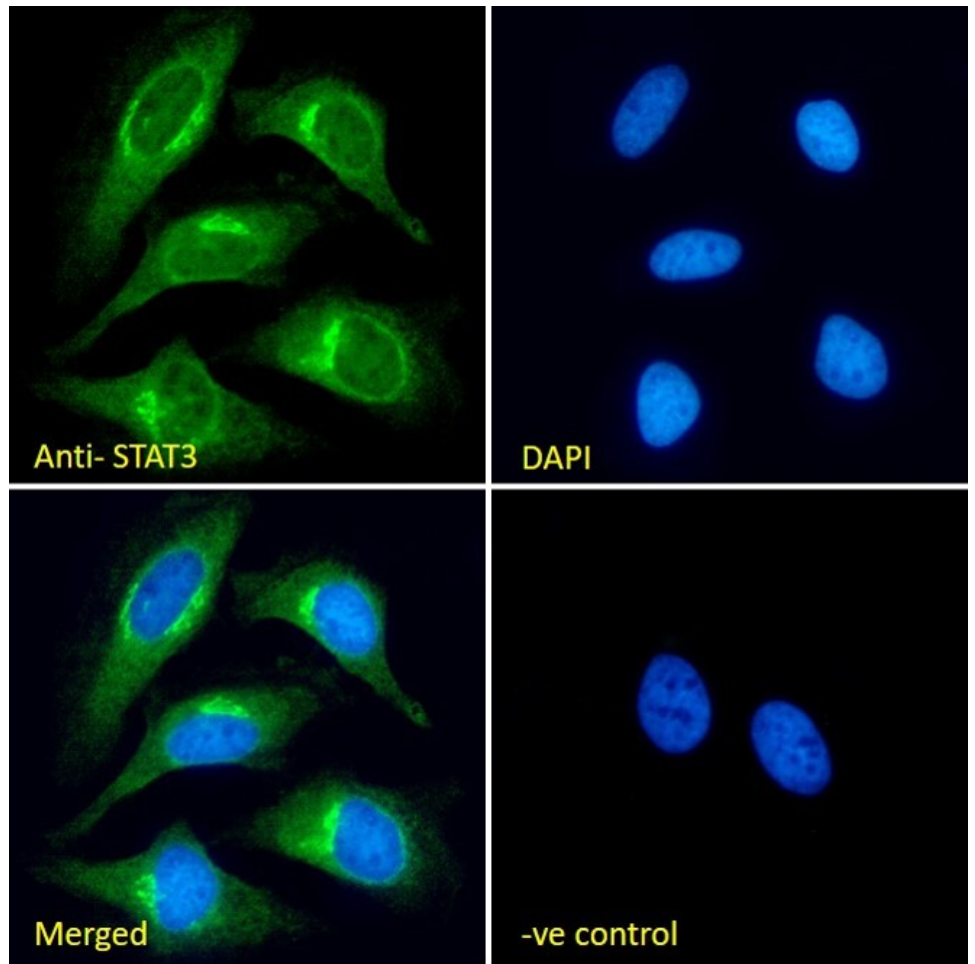
**Flow Cytometry:** Flow cytometric analysis of A431 cells.. Recommended concentration: 10ug/ml.

ded concentration: 10µg/ml.

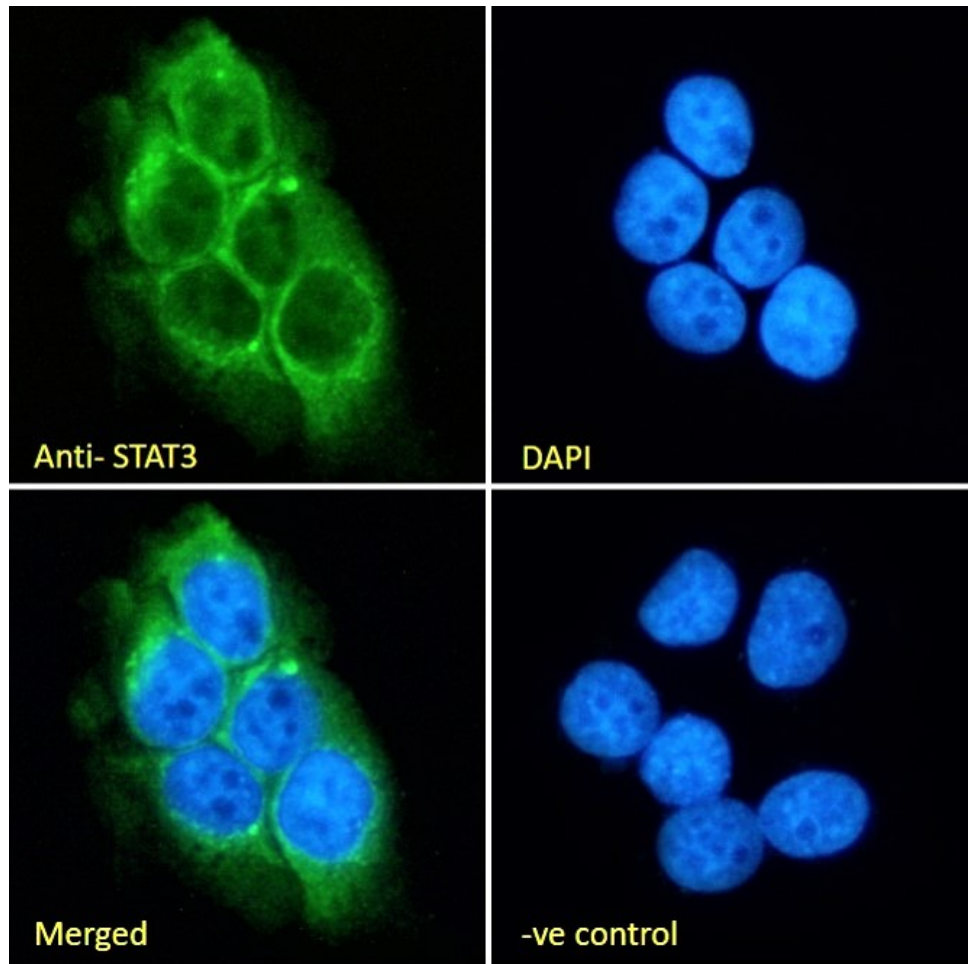
### Species Reactivity

**Tested:** Human

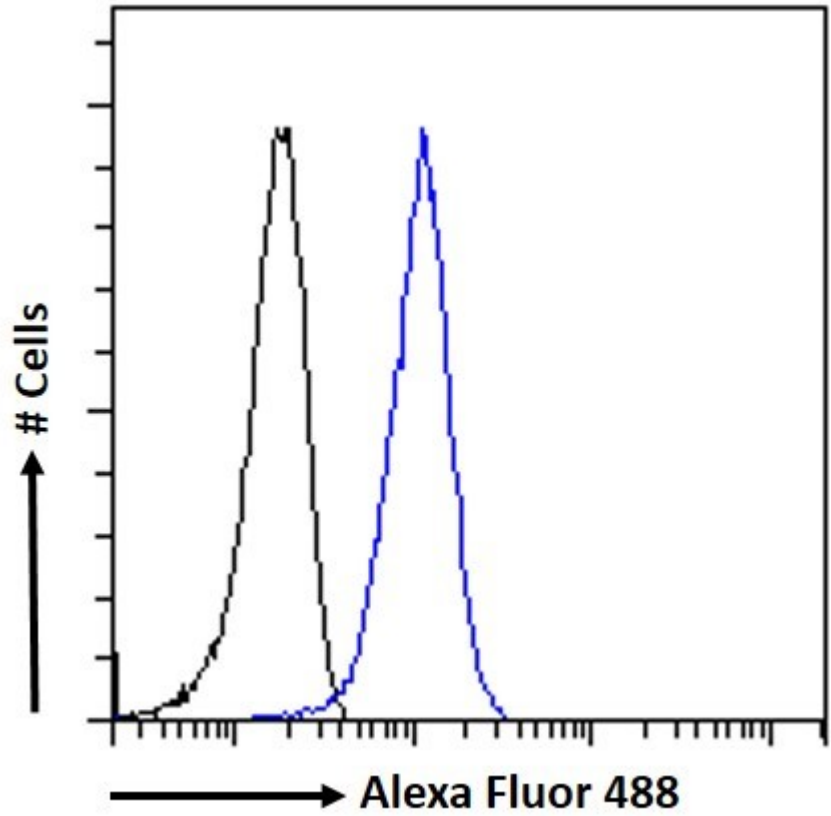
**Expected from sequence similarity:** Human, Mouse, Rat, Cow



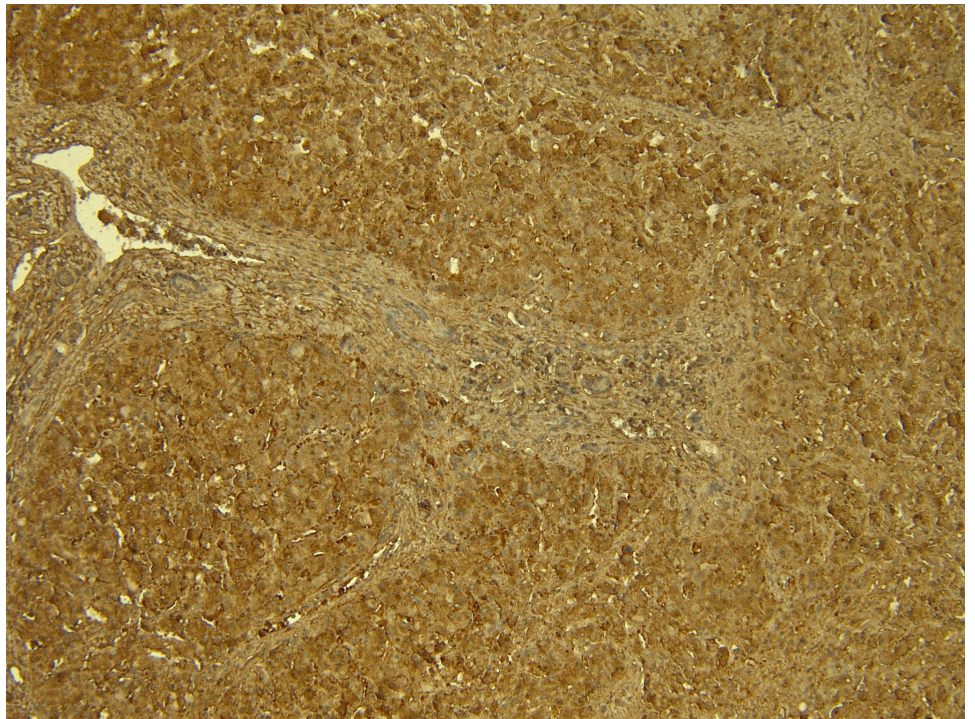
EB05073 Immunofluorescence analysis of paraformaldehyde fixed HeLa cells, permeabilized with 0.15% Triton. Primary incubation 1hr (10ug/ml) followed by Alexa Fluor 488 secondary antibody (2ug/ml), showing cytoplasmic and Golgi apparatus staining. The nuclear stain is DAPI (blue). Negative control: Unimmunized goat IgG (10ug/ml) followed by Alexa Fluor 488 secondary antibody (2ug/ml).



EB05073 Immunofluorescence analysis of paraformaldehyde fixed A431 cells, permeabilized with 0.15% Triton. Primary incubation 1hr (10ug/ml) followed by Alexa Fluor 488 secondary antibody (2ug/ml), showing cytoplasmic and staining. The nuclear stain is DAPI (blue). Negative control: Unimmunized goat IgG (10ug/ml) followed by Alexa Fluor 488 secondary antibody (2ug/ml).

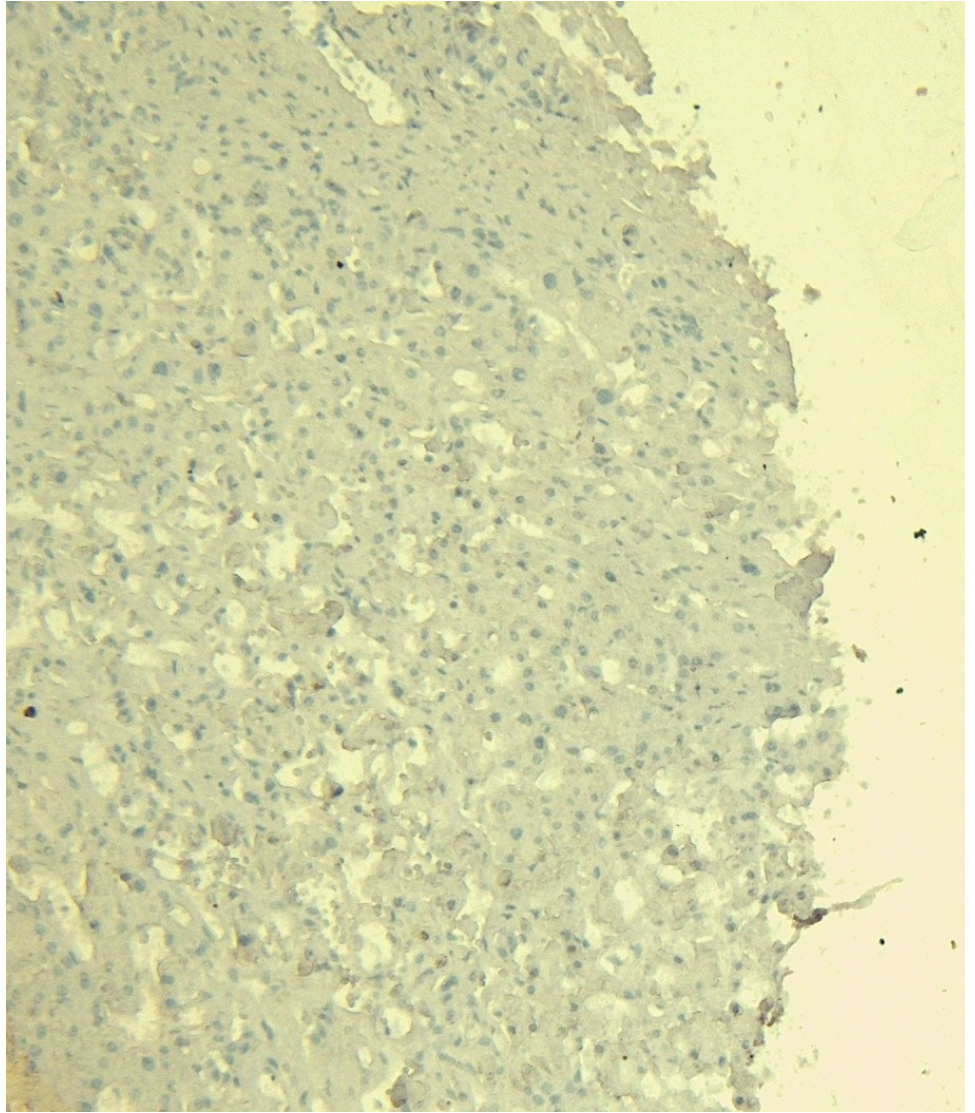


EB05073 Flow cytometric analysis of paraformaldehyde fixed A431 cells (blue line), permeabilized with 0.5% Triton. Primary incubation 1hr (10ug/ml) followed by Alexa Fluor 488 secondary antibody (1ug/ml). IgG control: Unimmunized goat IgG (black line) followed by Alexa Fluor 488 secondary antibody.



EB05073 (7 $\mu$ g/ml) staining of paraffin embedded Human Liver. Heat induced antigen retrieval with citrate buffer pH 6, HRP-staining.





EB05073 Negative Control showing staining of paraffin embedded Human Liver, with no primary antibody.