



UK Office

Everest Biotech Ltd

Cherwell Innovation Centre
77 Heyford Park
Upper Heyford
Oxfordshire
OX25 5HD
UK

Enquiries:

info@everestbiotech.com

Sales:

sales@everestbiotech.com

Tech support:

support@everestbiotech.com

Tel: +44 (0)1869 238326

Fax: +44 (0)1869 238327

US Office

Everest Biotech c/o Abcore

405 Maple Street, Suite A106
Ramona,
CA 92065
USA

Inquiries:

info@everestbiotech.com

Sales:

usasales@everestbiotech.com

Tech support:

support@everestbiotech.com

Tel: 888-320-4628 (toll-free)

Fax: 888-841-9041

www.everestbiotech.com

**Research Use Only. Not for
diagnostic or therapeutic use.**

EB05073 - Goat Anti-STAT3 (isoform 1 and 2) Antibody

Size: 100µg specific antibody in 200µl



Target Protein

Principal Names: STAT3, signal transducer and activator of transcription 3 (acute-phase response factor), APRF, DNA-binding protein APRF, acute-phase response factor, FLJ20882, MGC16063, HIES

Official Symbol: STAT3

Accession Number(s): NP_003141.2; NP_644805.1

Human GeneID(s): [6774](#)

Non-Human GeneID(s): 20848 (mouse), 25125 (rat)

Important Comments: This antibody is expected to recognise isoforms 1 and 2 (as represented by NP_644805.1 and NP_003141.2 respectively)

Immunogen

Peptide with sequence DMELTSECATSPM, from the C Terminus of the protein sequence according to NP_003141.2; NP_644805.1.

Please note the [peptide](#) is available for sale.

Purification and Storage

Purified from goat serum by ammonium sulphate precipitation followed by antigen affinity chromatography using the immunizing peptide.

Supplied at 0.5 mg/ml in Tris saline, 0.02% sodium azide, pH7.3 with 0.5% bovine serum albumin.

Aliquot and store at -20°C. Minimize freezing and thawing.

Applications Tested

Peptide ELISA: antibody detection limit dilution 1:8000.

Western blot: Preliminary testing showed a band at approx 80-85kDa in A431 nuclear cell lysate after 2µg/ml antibody staining (calculated MW of 80kDa according to NP_003141.2; and NP_644805.1). Primary incubation 1 hour at room temperature.

IHC: In paraffin embedded Mouse Thymus shows preferential staining of medulla over cortex. Recommended concentration: 4-6µg/ml.

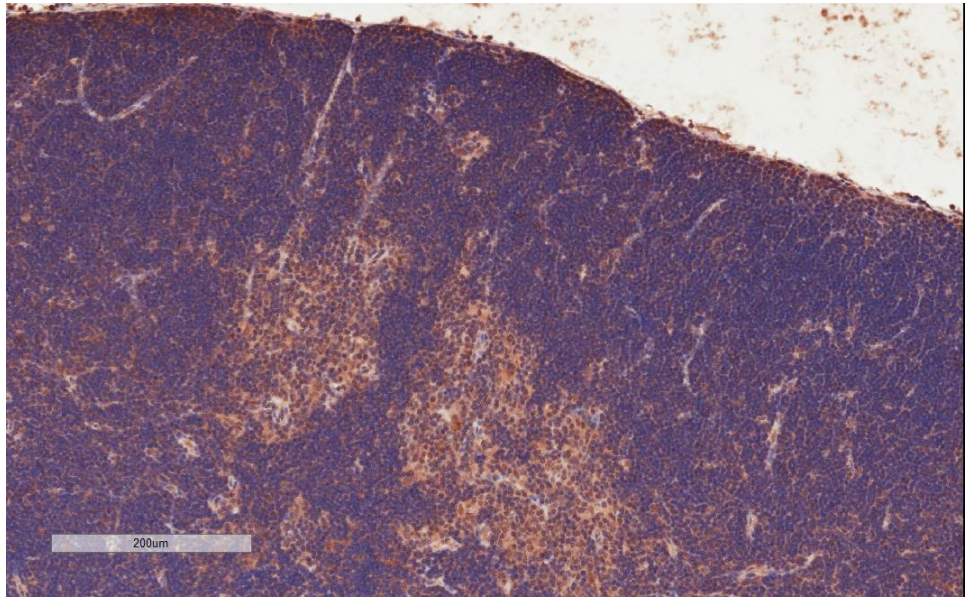
Immunofluorescence: Strong expression of the protein seen in the cytoplasm of HeLa and A431 cells. Recommended concentration: 10µg/ml.

Flow Cytometry: Flow cytometric analysis of A431 cells. Recommended concentration: 10ug/ml.

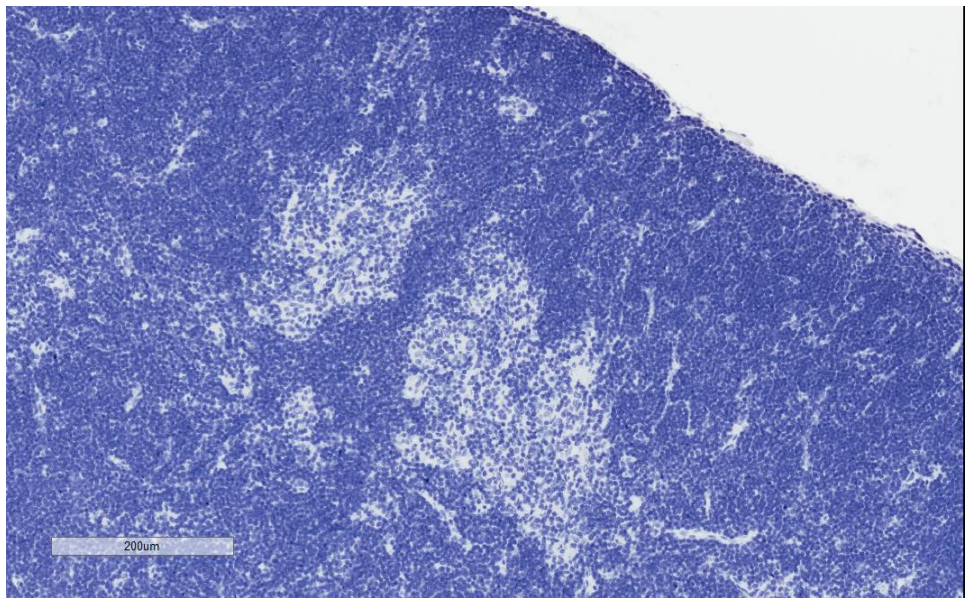
Species Reactivity

Tested: Human, Mouse

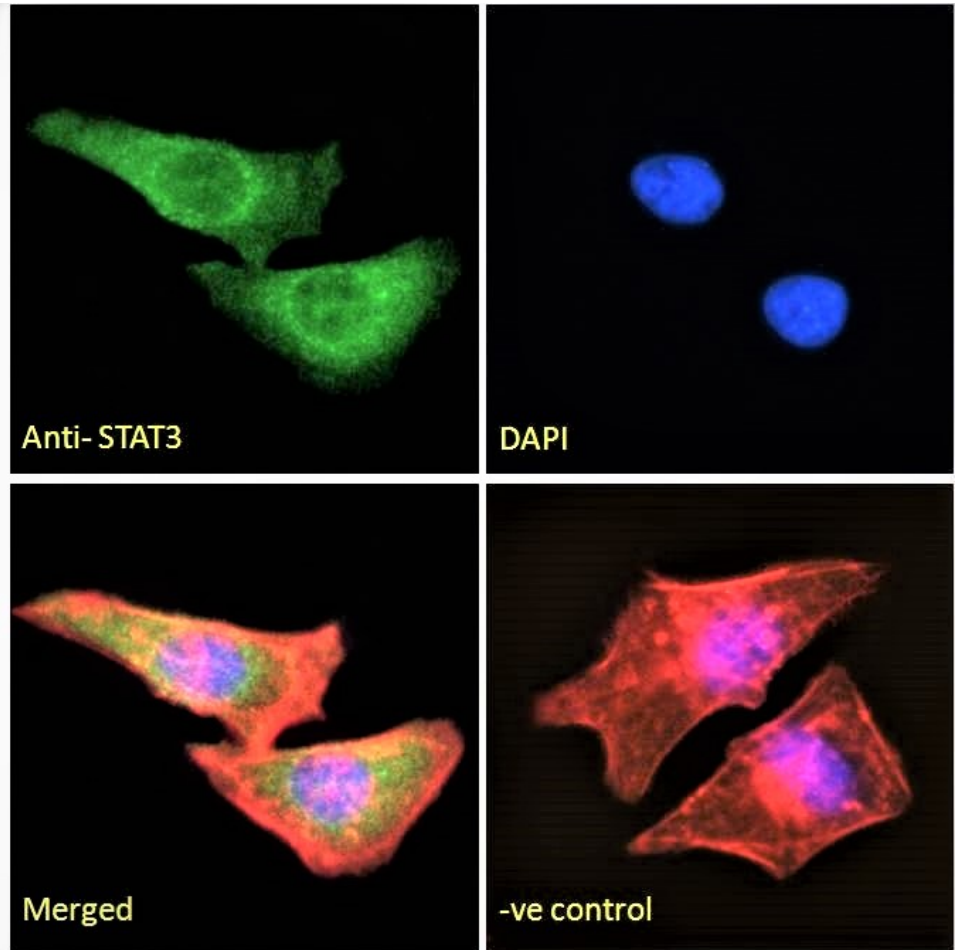
Expected from sequence similarity: Human, Mouse, Rat, Cow



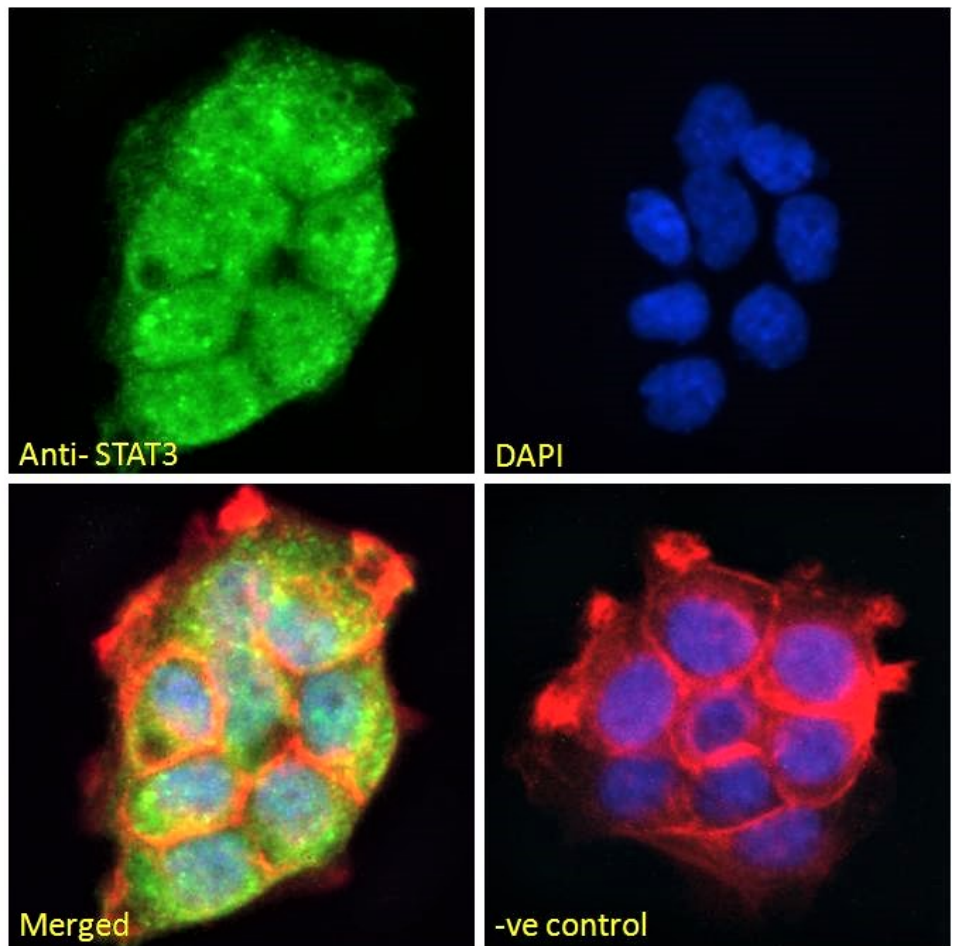
EB05073 (4µg/ml) staining of paraffin embedded Mouse Thymus. Microwaved antigen retrieval with citrate buffer pH 6, HRP-staining.



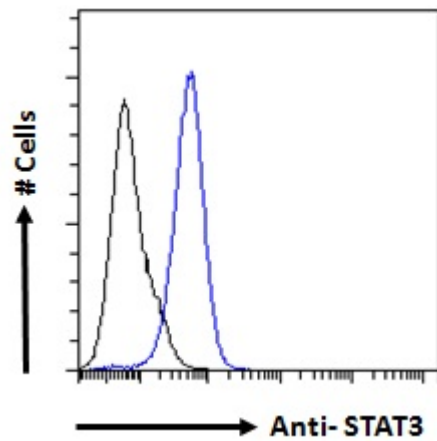
EB05073 Negative Control showing staining of paraffin embedded Mouse Thymus, with no primary antibody.



EB05073 Immunofluorescence analysis of paraformaldehyde fixed HeLa cells, permeabilized with 0.15% Triton. Primary incubation 1hr (10ug/ml) followed by Alexa Fluor 488 secondary antibody (2ug/ml), showing cytoplasmic and weak nuclear staining. Actin filaments were stained with phalloidin (red) and the nuclear stain is DAPI (blue). Negative control: Unimmunized goat IgG (10ug/ml) followed by Alexa Fluor 488 secondary antibody (2ug/ml).



EB05073 Immunofluorescence analysis of paraformaldehyde fixed A431 cells, permeabilized with 0.15% Triton. Primary incubation 1hr (10ug/ml) followed by Alexa Fluor 488 secondary antibody (2ug/ml), showing nuclear and cytoplasmic staining. Actin filaments were stained with phalloidin (red) and the nuclear stain is DAPI (blue). Negative control: Unimmunized goat IgG (10ug/ml) followed by Alexa Fluor 488 secondary antibody (2ug/ml).



EB05073 Flow cytometric analysis of paraformaldehyde fixed A431 cells (blue line), permeabilized with 0.5% Triton. Primary incubation 1hr (10ug/ml) followed by Alexa Fluor 488 secondary antibody (1ug/ml). IgG control: Unimmunized goat IgG (black line) followed by Alexa Fluor 488 secondary antibody.