



UK Office

Everest Biotech Ltd

Cherwell Innovation Centre
77 Heyford Park
Upper Heyford
Oxfordshire
OX25 5HD
UK

Enquiries:

info@everestbiotech.com

Sales:

sales@everestbiotech.com

Tech support:

support@everestbiotech.com

Tel: +44 (0)1869 238326

www.everestbiotech.com

**Research Use Only. Not for
diagnostic or therapeutic use.**

EB08546 - Goat Anti-Sterol carrier protein 2 Antibody

Size: 100µg specific antibody in 200µl



Target Protein

Principal Names: SCP2, sterol carrier protein 2, DKFZp686C12188, DKFZp686D11188, NLTP, NSL-TP, SCPX, nonspecific lipid-transfer protein, sterol carrier protein X

Official Symbol: SCP2

Accession Number(s): NP_001007099.1; NP_002970.2; NP_001180528.1;
NP_001180529.1; NP_001180546.1

Human GeneID(s): [6342](#)

Non-Human GeneID(s): 20280 (mouse), 25541 (rat)

Important Comments: This antibody is expected to recognize isoform 1, 2, 6, 7 and 8 (NP_002970.2; NP_001007099.1; NP_001180529.1; NP_001180528.1; NP_001180546.1 respectively),

Immunogen

Peptide with sequence C-KNHKHSVNNPYSQ, from the internal region of the protein sequence according to NP_001007099.1; NP_002970.2; NP_001180528.1; NP_001180529.1; NP_001180546.1.

Please note the [peptide](#) is available for sale.

Purification and Storage

Purified from goat serum by ammonium sulphate precipitation followed by antigen affinity chromatography using the immunizing peptide.

Supplied at 0.5 mg/ml in Tris saline, 0.02% sodium azide, pH7.3 with 0.5% bovine serum albumin.

Aliquot and store at -20°C. Minimize freezing and thawing.

Applications Tested

Peptide ELISA: antibody detection limit dilution 1:32000.

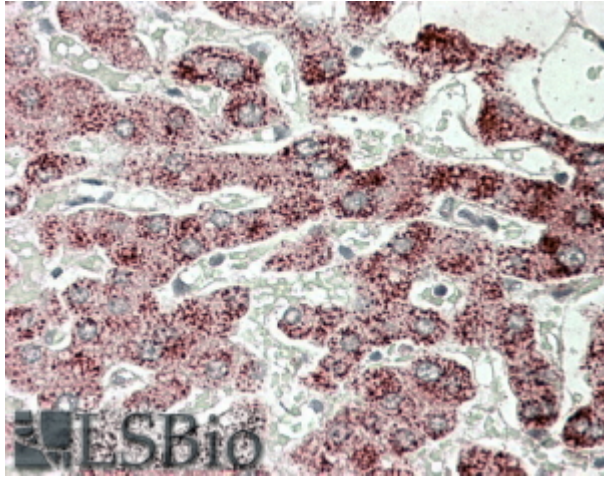
Western blot: Preliminary experiments gave an approx 50kDa band in Human Liver lysates after 0.3µg/ml antibody staining. Please note that currently we cannot find an explanation in the literature for the band we observe given the calculated size of 59.0kDa according to NP_001007099.1 and of 6.7kDa according to NP_002970.2. The 28kDa band was successfully blocked by incubation with the immunizing peptide. We would appreciate any feedback from people in the field - have any results been reported with other antibodies/lysates? Have any further splice variants/modified forms been reported?

IHC: In paraffin embedded Human Liver shows speckled cytoplasm staining in hepatocytes. Recommended concentration, 3-6µg/ml.

Species Reactivity

Tested: Human

Expected from sequence similarity: Human, Mouse, Rat, Dog, Pig, Cow



EB08546 (3.8 μ g/ml) staining of paraffin embedded Human Liver-. Steamed antigen retrieval with citrate buffer pH 6, AP-staining.