



## UK Office

### Everest Biotech Ltd

Cherwell Innovation Centre  
77 Heyford Park  
Upper Heyford  
Oxfordshire  
OX25 5HD  
UK

Enquiries:

[info@everestbiotech.com](mailto:info@everestbiotech.com)

Sales:

[sales@everestbiotech.com](mailto:sales@everestbiotech.com)

Tech support:

[support@everestbiotech.com](mailto:support@everestbiotech.com)

Tel: +44 (0)1869 238326

Fax: +44 (0)1869 238327

## US Office

### Everest Biotech c/o Abcore

405 Maple Street, Suite A106  
Ramona,  
CA 92065  
USA

Inquiries:

[info@everestbiotech.com](mailto:info@everestbiotech.com)

Sales:

[usasales@everestbiotech.com](mailto:usasales@everestbiotech.com)

Tech support:

[support@everestbiotech.com](mailto:support@everestbiotech.com)

Tel: 888-320-4628 (toll-free)

Fax: 888-841-9041

[www.everestbiotech.com](http://www.everestbiotech.com)

**Research Use Only. Not for  
diagnostic or therapeutic use.**

## EB08546 - Goat Anti-Sterol carrier protein 2 Antibody

Size: 100µg specific antibody in 200µl



### Target Protein

**Principal Names:** SCP2, sterol carrier protein 2, DKFZp686C12188, DKFZp686D11188, NLTP, NSL-TP, SCPX, nonspecific lipid-transfer protein, sterol carrier protein X

**Official Symbol:** SCP2

**Accession Number(s):** NP\_001007099.1; NP\_002970.2; NP\_001180528.1;  
NP\_001180529.1; NP\_001180546.1

**Human GeneID(s):** [6342](#)

**Non-Human GeneID(s):** 20280 (mouse), 25541 (rat)

**Important Comments:** This antibody is expected to recognize isoform 1, 2, 6, 7 and 8 (NP\_002970.2; NP\_001007099.1; NP\_001180529.1; NP\_001180528.1; NP\_001180546.1 respectively),

### Immunogen

Peptide with sequence C-KNHKHSVNNPYSQ, from the internal region of the protein sequence according to NP\_001007099.1; NP\_002970.2; NP\_001180528.1; NP\_001180529.1; NP\_001180546.1.

Please note the [peptide](#) is available for sale.

### Purification and Storage

Purified from goat serum by ammonium sulphate precipitation followed by antigen affinity chromatography using the immunizing peptide.

Supplied at 0.5 mg/ml in Tris saline, 0.02% sodium azide, pH7.3 with 0.5% bovine serum albumin.

Aliquot and store at -20°C. Minimize freezing and thawing.

### Applications Tested

**Peptide ELISA:** antibody detection limit dilution 1:32000.

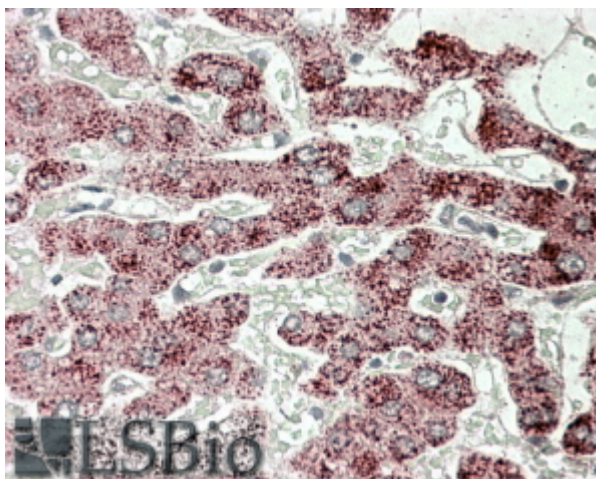
**Western blot:** Preliminary experiments gave an approx 50kDa band in Human Liver lysates after 0.3µg/ml antibody staining. Please note that currently we cannot find an explanation in the literature for the band we observe given the calculated size of 59.0kDa according to NP\_001007099.1 and of 6.7kDa according to NP\_002970.2. The 28kDa band was successfully blocked by incubation with the immunizing peptide. We would appreciate any feedback from people in the field - have any results been reported with other antibodies/lysates? Have any further splice variants/modified forms been reported?

**IHC:** In paraffin embedded Human Liver shows speckled cytoplasm staining in hepatocytes. Recommended concentration, 3-6µg/ml.

### Species Reactivity

**Tested:** Human

**Expected from sequence similarity:** Human, Mouse, Rat, Dog, Pig, Cow



EB08546 (3.8µg/ml) staining of paraffin embedded Human Liver-. Steamed antigen retrieval with citrate buffer pH 6, AP-staining.