



UK Office

Everest Biotech Ltd

Cherwell Innovation Centre
77 Heyford Park
Upper Heyford
Oxfordshire
OX25 5HD
UK

Enquiries:

info@everestbiotech.com

Sales:

sales@everestbiotech.com

Tech support:

support@everestbiotech.com

Tel: +44 (0)1869 238326

www.everestbiotech.com

**Research Use Only. Not for
diagnostic or therapeutic use.**

EB11981 - Goat Anti-Stomatin Antibody

Size: 100µg specific antibody in 200µl



Target Protein

Principal Names: STOM, stomatin, BND7, EPB7, EPB72, erythrocyte band 7 integral membrane protein, erythrocyte membrane protein band 7.2 (stomatin), protein 7.2b

Official Symbol: STOM

Accession Number(s): NP_004090.4; NP_937837.1

Human GeneID(s): [2040](#)

Important Comments: This antibody is expected to recognize both reported isoforms (NP_004090.4; NP_937837.1).

Immunogen

Peptide with sequence EKRHTRDSEAQR-C, from the N Terminus of the protein sequence according to NP_004090.4; NP_937837.1.

Please note the [peptide](#) is available for sale.

Purification and Storage

Purified from goat serum by ammonium sulphate precipitation followed by antigen affinity chromatography using the immunizing peptide.

Supplied at 0.5 mg/ml in Tris saline, 0.02% sodium azide, pH7.3 with 0.5% bovine serum albumin.

Aliquot and store at -20°C. Minimize freezing and thawing.

Applications Tested

Peptide ELISA: antibody detection limit dilution 1:128000.

Western blot: Approx 30kDa band observed in Human Erythrocytes, Spleen, Bone Marrow and Lung lysates (calculated MW of 31.7kDa according to NP_004090.4).

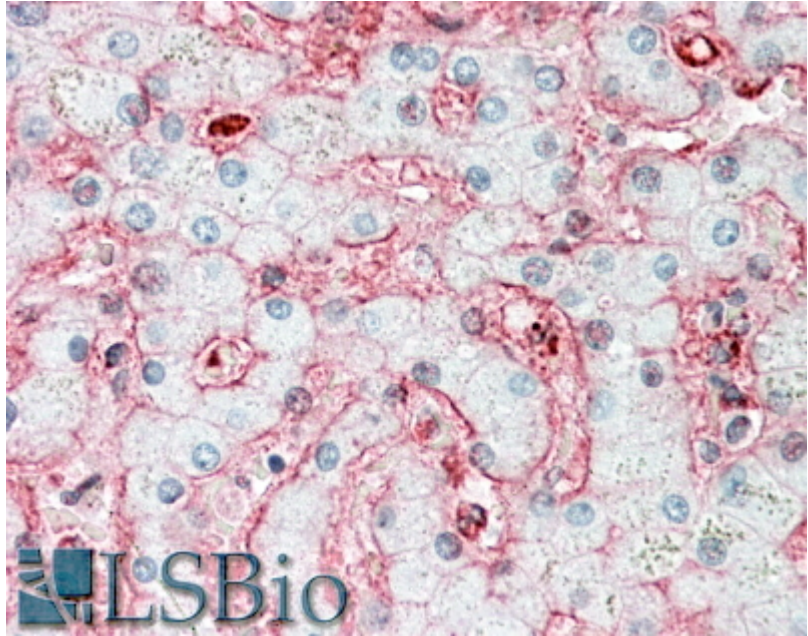
Recommended concentration: 0.1-0.3µg/ml.

IHC: In paraffin embedded Human Liver shows membrane staining of hepatocytes and of sinusoidal lining cells. Recommended concentration, 5-10µg/ml.

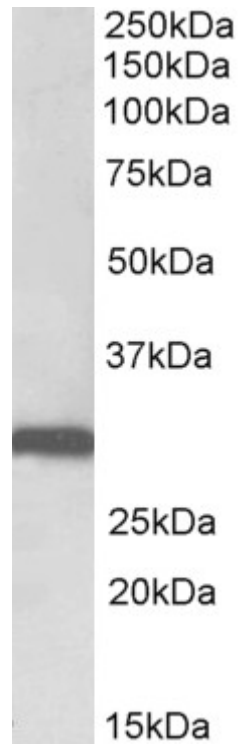
Species Reactivity

Tested: Human

Expected from sequence similarity: Human



EB11981 (5µg/ml) staining of paraffin embedded Human Liver. Steamed antigen retrieval with citrate buffer pH 6, AP-staining.



EB11981 (0.1µg/ml) staining of Human Lung lysate (35µg protein in RIPA buffer). Primary incubation was 1 hour. Detected by chemiluminescence.