



## International Office

### Everest Biotech Ltd

Vector Laboratories, Inc.  
6737 Mowry Ave  
Newark, CA 94560  
United States

Customer Service:

[customerservice@vectorlabs.com](mailto:customerservice@vectorlabs.com)

Technical Service:

[technical@vectorlabs.com](mailto:technical@vectorlabs.com)

Tel: +1 (800) 227-6666

[www.everestbiotech.com](http://www.everestbiotech.com)

**Research Use Only. Not for  
diagnostic or therapeutic use.**

## EB09717 - Goat Anti-Stromal antigen 2 / STAG2 Antibody

Size: 100µg specific antibody in 200µl



### Target Protein

**Principal Names:** STAG2, stromal antigen 2, DKFZp686P168, DKFZp781H1753, FLJ25871, SA-2, SA2, bA517O1.1, OTTHUMP00000024338, OTTHUMP00000043514, OTTHUMP00000043515, OTTHUMP00000081754, OTTHUMP00000081755, SCC3 homolog 2

**Official Symbol:** STAG2

**Accession Number(s):** NP\_001036214.1; NP\_006594.3

**Human GeneID(s):** [10735](#)

**Non-Human GeneID(s):** 20843 (mouse), 313304 (rat)

**Important Comments:** This antibody is expected to recognize both reported isoforms (NP\_001036214.1; NP\_006594.3). Reported variants NP\_001036215.1 and NP\_001036214.1 represent identical protein: Reported variants NP\_001036216.1 and NP\_006594.3 represent identical protein.

### Immunogen

Peptide with sequence C-SRGSTVRSKSKPST, from the internal region of the protein sequence according to NP\_001036214.1; NP\_006594.3.

Please note the [peptide](#) is available for sale.

### Purification and Storage

Purified from goat serum by ammonium sulphate precipitation followed by antigen affinity chromatography using the immunizing peptide.

Supplied at 0.5 mg/ml in Tris saline, 0.02% sodium azide, pH7.3 with 0.5% bovine serum albumin.

Aliquot and store at -20°C. Minimize freezing and thawing.

### Applications Tested

**Peptide ELISA:** antibody detection limit dilution 1:32000.

**Western blot:** Approx 160kDa band observed in lysates of cell line K562 and ~140kDa in rodent Spleen while ~150kDa in Mouse Thymus lysates (calculated MW of 146kDa according to Human NP\_001036214.1 and 140kDa according to Mouse NP\_001071180.1). Recommended concentration: 0.1-0.3µg/ml.

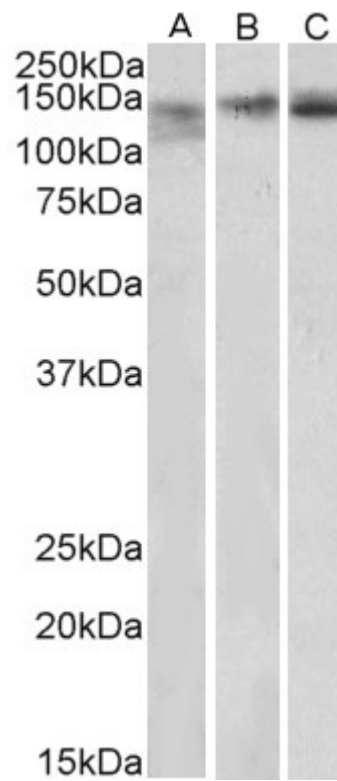
### Species Reactivity

**Tested:** Human, Mouse, Rat

**Expected from sequence similarity:** Human, Mouse, Rat, Dog, Pig, Cow



EB09717 (0.03 $\mu$ g/ml) staining of K562 lysate (35 $\mu$ g protein in RIPA buffer). Primary incubation was 1 hour. Detected by chemiluminescence.



EB09717 (0.3 $\mu$ g/ml) staining of Mouse Spleen (A), Mouse Thymus (B) and Rat Spleen (C) lysates (35 $\mu$ g protein in RIPA buffer). Primary incubation was 1 hour. Detected by chemiluminescence.