



## UK Office

### Everest Biotech Ltd

Cherwell Innovation Centre  
77 Heyford Park  
Upper Heyford  
Oxfordshire  
OX25 5HD  
UK

Enquiries:

[info@everestbiotech.com](mailto:info@everestbiotech.com)

Sales:

[sales@everestbiotech.com](mailto:sales@everestbiotech.com)

Tech support:

[support@everestbiotech.com](mailto:support@everestbiotech.com)

Tel: +44 (0)1869 238326

[www.everestbiotech.com](http://www.everestbiotech.com)

**Research Use Only. Not for  
diagnostic or therapeutic use.**

## EB07594 - Goat Anti-STS2 / TULA (internal) Antibody

Size: 100µg specific antibody in 200µl



### Target Protein

**Principal Names:** TULA, STS2 CBL-interacting protein 4, UBASH3A, ubiquitin associated and SH3 domain containing, A, T-cell ubiquitin ligand protein, Suppressor of T-cell receptor signaling 2, CLIP4

**Official Symbol:** UBASH3A

**Accession Number(s):** NP\_061834.1; NP\_001001895.1

**Human GeneID(s):** [53347](#)

**Important Comments:** This antibody is expected to recognize both reported isoforms (NP\_061834.1 and NP\_001001895.1).

### Immunogen

Peptide with sequence QQCSTPDGKYRDP, from the internal region of the protein sequence according to NP\_061834.1; NP\_001001895.1.

Please note the [peptide](#) is available for sale.

### Purification and Storage

Purified from goat serum by ammonium sulphate precipitation followed by antigen affinity chromatography using the immunizing peptide.

Supplied at 0.5 mg/ml in Tris saline, 0.02% sodium azide, pH7.3 with 0.5% bovine serum albumin.

Aliquot and store at -20°C. Minimize freezing and thawing.

### Applications Tested

**Peptide ELISA:** antibody detection limit dilution 1:64000.

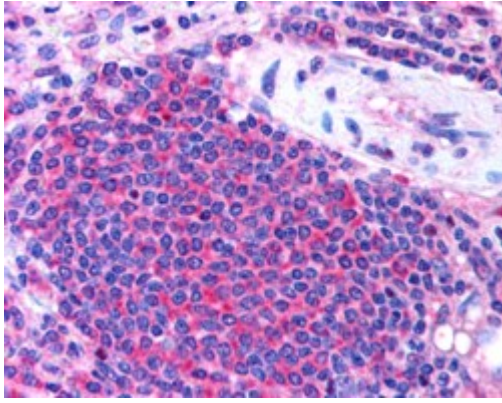
**Western blot:** Preliminary experiments gave an approx 48kDa band in lysates of B-cell line Daudi after 0.1µg/ml antibody staining. Please note that currently we cannot find an explanation in the literature for the band we observe given the calculated size of 74.1kDa according to NP\_061834.1 and 69.8kDa according to NP\_001001895.1. The 48kDa band was successfully blocked by incubation with the immunizing peptide.

**IHC:** In paraffin embedded Human Spleen shows cytoplasm staining of T-cells eccentrically gathered around an artery. Recommended concentration: 2.5µg/ml.

### Species Reactivity

**Tested:** Human

**Expected from sequence similarity:** Human, Dog



EB07594 (2.5µg/ml) staining of paraffin embedded Human Spleen. Steamed antigen retrieval with citrate buffer pH 6, AP-staining.