



UK Office

Everest Biotech Ltd

Cherwell Innovation Centre
77 Heyford Park
Upper Heyford
Oxfordshire
OX25 5HD
UK

Enquiries:

info@everestbiotech.com

Sales:

sales@everestbiotech.com

Tech support:

support@everestbiotech.com

Tel: +44 (0)1869 238326

Fax: +44 (0)1869 238327

US Office

Everest Biotech c/o Abcore

405 Maple Street, Suite A106
Ramona,
CA 92065
USA

Inquiries:

info@everestbiotech.com

Sales:

usasales@everestbiotech.com

Tech support:

support@everestbiotech.com

Tel: 888-320-4628 (toll-free)

Fax: 888-841-9041

www.everestbiotech.com

**Research Use Only. Not for
diagnostic or therapeutic use.**

EB05327 - Goat Anti-STUB1 / CHIP Antibody

Size: 100µg specific antibody in 200µl



Target Protein

Principal Names: STUB1, CHIP, STIP1 homology and U-Box containing protein 1, HSPABP2, NY-CO-7, SDCCAG7, serologically defined colon cancer antigen 7, carboxy terminus of Hsp70p-interacting protein, heat shock protein A binding protein 2 (c-terminal), LA16c-313D11.6, UBOX1

Official Symbol: STUB1

Accession Number(s): NP_005852.2

Human GeneID(s): [10273](#)

Immunogen

Peptide with sequence C-DAFISENGWVEDY, from the C Terminus of the protein sequence according to NP_005852.2.

Please note the [peptide](#) is available for sale.

Purification and Storage

Purified from goat serum by ammonium sulphate precipitation followed by antigen affinity chromatography using the immunizing peptide.

Supplied at 0.5 mg/ml in Tris saline, 0.02% sodium azide, pH7.3 with 0.5% bovine serum albumin.

Aliquot and store at -20°C. Minimize freezing and thawing.

Applications Tested

Peptide ELISA: antibody detection limit dilution 1:64000.

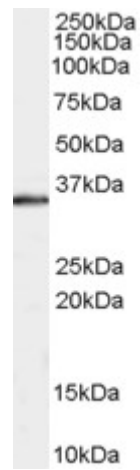
Western blot: Approx 35kDa band observed in Human Muscle lysates (calculated MW of 34.9kDa according to NP_005852.2). Recommended concentration: 0.3-1µg/ml. Primary incubation was for 1 hour.

IHC: Paraffin embedded Human Kidney. Recommended concentration: 5-6µg/ml.

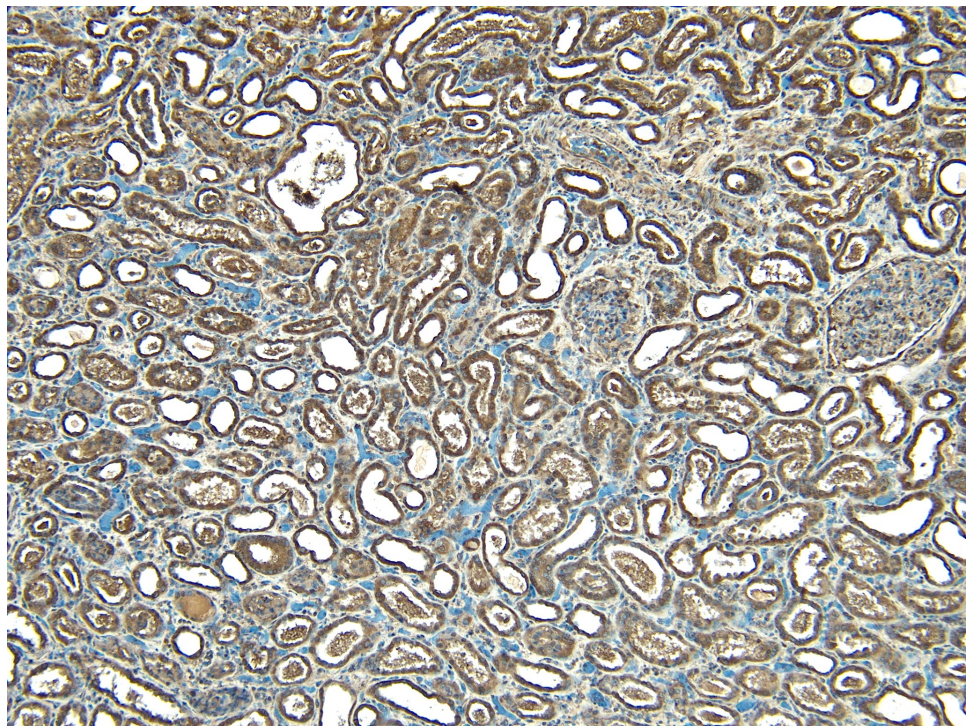
Species Reactivity

Tested: Human

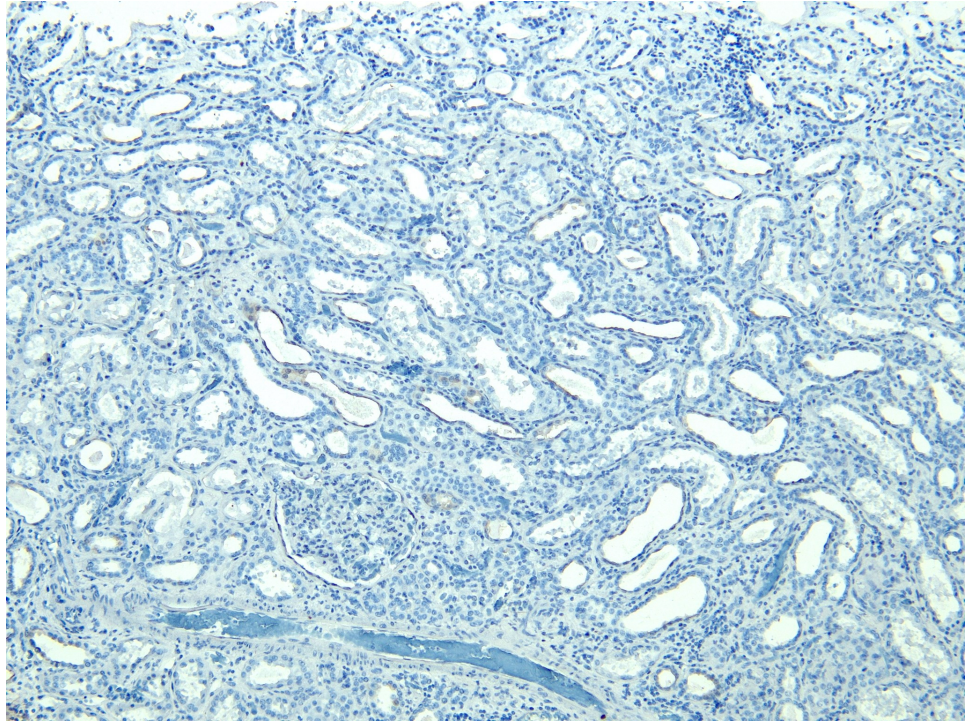
Expected from sequence similarity: Human, Mouse, Rat, Dog, Cow



EB05327 staining (0.3µg/ml) of Human Muscle lysate (RIPA buffer, 35µg total protein per lane). Detected by chemiluminescence.



EB05327 (5µg/ml) staining of paraffin embedded Human Kidney. Heat induced antigen retrieval with citrate buffer pH 6, HRP-staining.



EB05327 Negative Control showing staining of paraffin embedded Human Kidney, with no primary antibody.