

## International Office

### Everest Biotech Ltd

Vector Laboratories, Inc.  
6737 Mowry Ave  
Newark, CA 94560  
United States

Customer Service:

[customerservice@vectorlabs.com](mailto:customerservice@vectorlabs.com)

Technical Service:

[technical@vectorlabs.com](mailto:technical@vectorlabs.com)

Tel: +1 (800) 227-6666

[www.everestbiotech.com](http://www.everestbiotech.com)

**Research Use Only. Not for  
diagnostic or therapeutic use.**

## EB06881 - Goat Anti-STX1A / STX1B Antibody

Size: 100µg specific antibody in 200µl



### Target Protein

**Principal Names:** STX1A, syntaxin 1A (brain) , HPC-1, STX1, p35-1, SYN1A, OTTHUMP00000174615, OTTHUMP00000174616, OTTHUMP00000174617, OTTHUMP00000174618, neuron-specific antigen HPC-1, syntaxin-1A, STX1B, syntaxin 1B, STX1B1, STX1B2, FP17469, OTTHUMP00000163224, syntaxin 1B1, syntaxin 1B2, syntaxin-1B, syntaxin-1B1, syntaxin-1B2

**Official Symbol:** STX1A / STX1B

**Accession Number(s):** NP\_004594.1; NP\_001159375.1; NP\_443106.1

**Human GeneID(s):** [6804](#) , [112755](#)

**Non-Human GeneID(s):** 20907 (mouse), 116470 (rat)

**Important Comments:** Please note this product is expected to recognize the products of 2 different genes. STX1A (NP\_004594.1 and NP\_001159375.1) and STX1B (NP\_443106.1).

### Immunogen

Peptide with sequence KDRTQELRTAKD-C, from the N Terminus of the protein sequence according to NP\_004594.1; NP\_001159375.1; NP\_443106.1.

Please note the [peptide](#) is available for sale.

### Purification and Storage

Purified from goat serum by ammonium sulphate precipitation followed by antigen affinity chromatography using the immunizing peptide.

Supplied at 0.5 mg/ml in Tris saline, 0.02% sodium azide, pH7.3 with 0.5% bovine serum albumin.

Aliquot and store at -20°C. Minimize freezing and thawing.

### Applications Tested

**Peptide ELISA:** antibody detection limit dilution 1:32000.

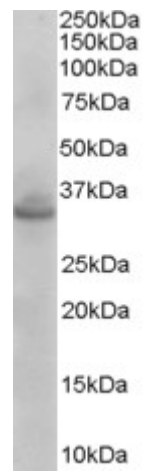
**Western blot:** Approx 35kDa band observed in Mouse Brain lysates (calculated MW of 33.0kDa according to NP\_004594.1 and 33.2kDa according to NP\_443106.1).

Recommended concentration: 0.01-0.03µg/ml.

### Species Reactivity

**Tested:** Mouse

**Expected from sequence similarity:** Human, Mouse, Rat, Dog, Cow



EB06881 (0.003 $\mu$ g/ml) staining of Mouse Brain lysate (35 $\mu$ g protein in RIPA buffer). Primary incubation was 1 hour. Detected by chemiluminescence.