



## UK Office

### Everest Biotech Ltd

Cherwell Innovation Centre  
77 Heyford Park  
Upper Heyford  
Oxfordshire  
OX25 5HD  
UK

Enquiries:

[info@everestbiotech.com](mailto:info@everestbiotech.com)

Sales:

[sales@everestbiotech.com](mailto:sales@everestbiotech.com)

Tech support:

[support@everestbiotech.com](mailto:support@everestbiotech.com)

Tel: +44 (0)1869 238326

Fax: +44 (0)1869 238327

## US Office

### Everest Biotech c/o Abcore

405 Maple Street, Suite A106  
Ramona,  
CA 92065  
USA

Inquiries:

[info@everestbiotech.com](mailto:info@everestbiotech.com)

Sales:

[usasales@everestbiotech.com](mailto:usasales@everestbiotech.com)

Tech support:

[support@everestbiotech.com](mailto:support@everestbiotech.com)

Tel: 888-320-4628 (toll-free)

Fax: 888-841-9041

[www.everestbiotech.com](http://www.everestbiotech.com)

**Research Use Only. Not for  
diagnostic or therapeutic use.**

## EB06448 - Goat Anti-Survivin / BIRC5 Antibody

Size: 100µg specific antibody in 200µl



### Target Protein

**Principal Names:** BIRC5, survivin, API4, EPR-1, baculoviral IAP repeat-containing 5 (survivin), apoptosis inhibitor 4, baculoviral IAP repeat-containing 5, baculoviral IAP repeat-containing protein 5, survivin variant 3 alpha

**Official Symbol:** BIRC5

**Accession Number(s):** NP\_001159.2; NP\_001012271.1

**Human GeneID(s):** [332](#)

**Important Comments:** This antibody is expected to recognize the reported isoforms 1 (NP\_001159.2) and isoform 3 (NP\_001012271.1).

### Immunogen

Peptide with sequence CVRRAIEQLAAMD, from the C Terminus of the protein sequence according to NP\_001159.2; NP\_001012271.1.

Please note the [peptide](#) is available for sale.

### Purification and Storage

Purified from goat serum by ammonium sulphate precipitation followed by antigen affinity chromatography using the immunizing peptide.

Supplied at 0.5 mg/ml in Tris saline, 0.02% sodium azide, pH7.3 with 0.5% bovine serum albumin.

Aliquot and store at -20°C. Minimize freezing and thawing.

### Applications Tested

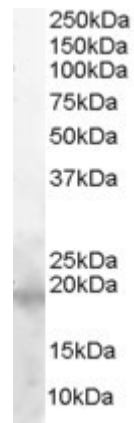
**Peptide ELISA:** antibody detection limit dilution 1:16000.

**Western blot:** Approx 18kDa band observed in Human T cell line MOLT4 lysates (calculated MW of 16.4kDa according to NP\_001159.2 and 18.6kDa according to NP\_001012271.1). Recommended concentration: 0.01-0.5µg/ml.

### Species Reactivity

**Tested:** Human

**Expected from sequence similarity:** Human, Cat, Dog, Pig, Cow



EB06448 (0.01µg/ml) staining of Molt-4 lysate (35µg protein in RIPA buffer). Primary incubation was 1 hour.  
Detected by chemiluminescence.