

UK Office

Everest Biotech Ltd

Cherwell Innovation Centre
77 Heyford Park
Upper Heyford
Oxfordshire
OX25 5HD
UK

Enquiries:

info@everestbiotech.com

Sales:

sales@everestbiotech.com

Tech support:

support@everestbiotech.com

Tel: +44 (0)1869 238326

www.everestbiotech.com

**Research Use Only. Not for
diagnostic or therapeutic use.**

EB07430 - Goat Anti-SV2A Antibody

Size: 100µg specific antibody in 200µl



Target Protein

Principal Names: SV2A, synaptic vesicle glycoprotein 2A, KIAA0736, SV2, synaptic vesicle glycoprotein 2

Official Symbol: SV2A

Accession Number(s): NP_055664.3; NP_001265648.1

Human GeneID(s): [9900](#)

Non-Human GeneID(s): 64051 (mouse), 117559 (rat)

Immunogen

Peptide with sequence C-TVELYPSDKRTTA, from the internal region of the protein sequence according to NP_055664.3; NP_001265648.1.

Please note the [peptide](#) is available for sale.

Purification and Storage

Purified from goat serum by ammonium sulphate precipitation followed by antigen affinity chromatography using the immunizing peptide.

Supplied at 0.5 mg/ml in Tris saline, 0.02% sodium azide, pH7.3 with 0.5% bovine serum albumin.

Aliquot and store at -20°C. Minimize freezing and thawing.

Applications Tested

Peptide ELISA: antibody detection limit dilution 1:1000.

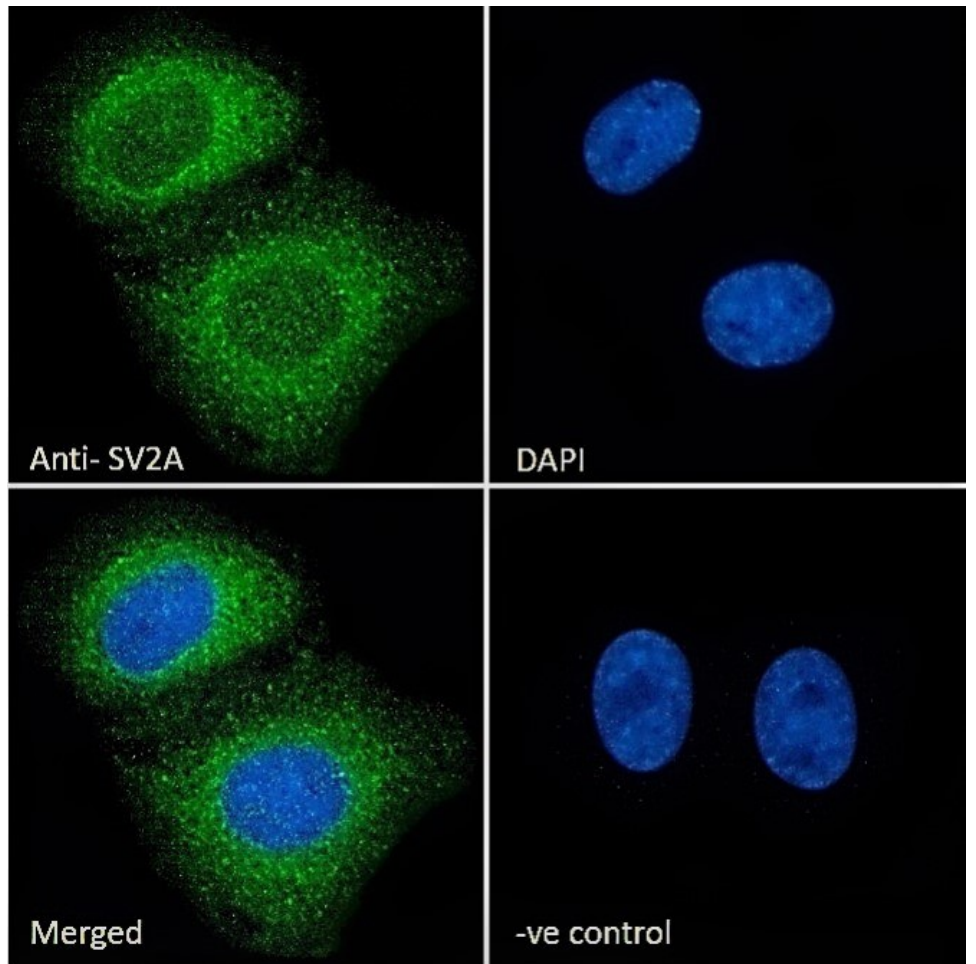
Western blot: Preliminary testing showed a band at approx 80kDa in Mouse and Rat Brain lysate after 1.5µg/ml antibody staining (calculated MW of 82.6kDa according to Mouse NP_071313.1 and Rat NP_476558.2). Primary incubation 1 hour at room temperature.

Immunofluorescence: Strong expression of the protein seen in the cytoplasm of U2OS and KNRK cells. Recommended concentration: 10µg/ml.

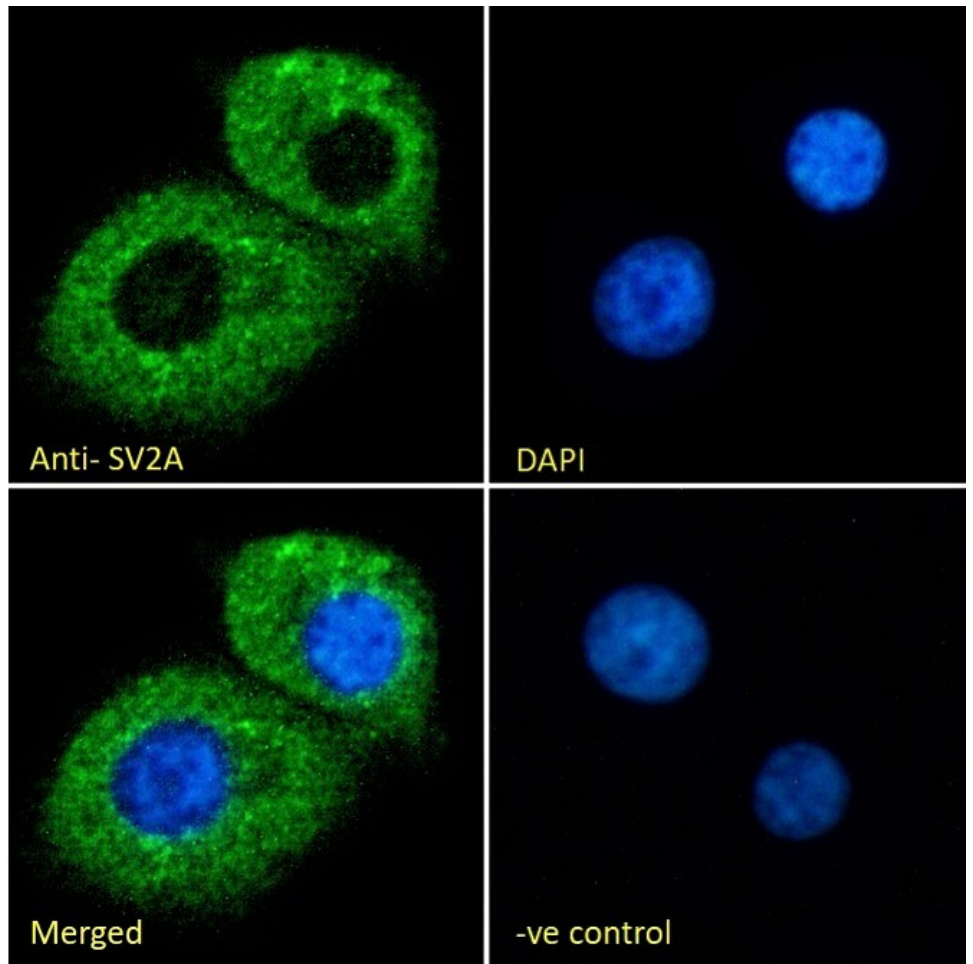
Species Reactivity

Tested: Human, Rat

Expected from sequence similarity: Human, Mouse, Rat, Dog, Pig, Cow



EB07430 Immunofluorescence analysis of paraformaldehyde fixed U2OS cells, permeabilized with 0.15% Triton. Primary incubation 1hr (10ug/ml) followed by Alexa Fluor 488 secondary antibody (2ug/ml), showing cytoplasmic staining. The nuclear stain is DAPI (blue). Negative control: Unimmunized goat IgG (10ug/ml) followed by Alexa Fluor 488 secondary antibody (2ug/ml).



EB07430 Immunofluorescence analysis of paraformaldehyde fixed KNRK cells, permeabilized with 0.15% Triton. Primary incubation 1hr (10ug/ml) followed by Alexa Fluor 488 secondary antibody (2ug/ml), showing cytoplasmic staining. The nuclear stain is DAPI (blue). Negative control: Unimmunized goat IgG (10ug/ml) followed by Alexa Fluor 488 secondary antibody (2ug/ml).