



UK Office

Everest Biotech Ltd

Cherwell Innovation Centre
77 Heyford Park
Upper Heyford
Oxfordshire
OX25 5HD
UK

Enquiries:

info@everestbiotech.com

Sales:

sales@everestbiotech.com

Tech support:

support@everestbiotech.com

Tel: +44 (0)1869 238326

www.everestbiotech.com

**Research Use Only. Not for
diagnostic or therapeutic use.**

EB06584 - Goat Anti-Synaptogyrin 2 / Cellugyrin Antibody

Size: 100µg specific antibody in 200µl



Target Protein

Principal Names: cellugyrin, synaptogyrin 2, SYNGR2, MGC102914

Official Symbol: SYNGR2

Accession Number(s): NP_004701.1; NP_001307452.1

Human GeneID(s): [9144](#)

Important Comments: This antibody is expected to recognize both reported antibodies (NP_004701.1; NP_001307452.1).

Immunogen

Peptide with sequence CIYGEGYSNAHESKQ, from the internal region of the protein sequence according to NP_004701.1; NP_001307452.1.

Please note the [peptide](#) is available for sale.

Purification and Storage

Purified from goat serum by ammonium sulphate precipitation followed by antigen affinity chromatography using the immunizing peptide.

Supplied at 0.5 mg/ml in Tris saline, 0.02% sodium azide, pH7.3 with 0.5% bovine serum albumin.

Aliquot and store at -20°C. Minimize freezing and thawing.

Applications Tested

Peptide ELISA: antibody detection limit dilution 1:8000.

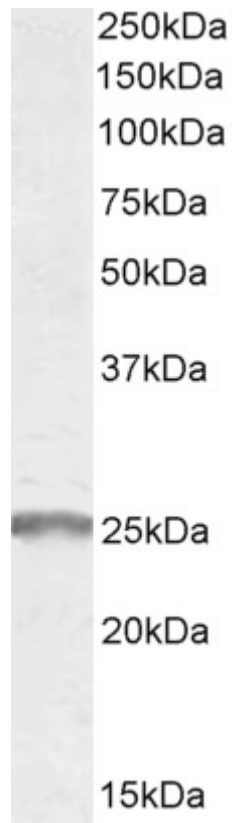
Western blot: Approx 25-26kDa band observed in Human Muscle lysates (calculated MW of 24.8kDa according to NP_004701.1). Recommended concentration: 0.3-1µg/ml.

Primary incubation was 1 hour.

Species Reactivity

Tested: Human

Expected from sequence similarity: Human, Mouse



EB06584 (1 μ g/ml) staining of Human Muscle lysate (35 μ g protein in RIPA buffer). Detected by chemiluminescence.