

UK Office

Everest Biotech Ltd

Cherwell Innovation Centre
77 Heyford Park
Upper Heyford
Oxfordshire
OX25 5HD
UK

Enquiries:

info@everestbiotech.com

Sales:

sales@everestbiotech.com

Tech support:

support@everestbiotech.com

Tel: +44 (0)1869 238326

www.everestbiotech.com

**Research Use Only. Not for
diagnostic or therapeutic use.**

EB10577 - Goat Anti-Synaptotagmin-2 Antibody

Size: 100µg specific antibody in 200µl



Target Protein

Principal Names: SYT2, synaptotagmin II, FLJ42519, SytII, synaptotagmin 2, synaptotagmin-2

Official Symbol: SYT2

Accession Number(s): NP_796376.2

Human GeneID(s): [127833](#)

Non-Human GeneID(s): 20980 (mouse), 24805 (rat)

Important Comments: Reported variants represent identical protein: NP_001129976.1, NP_796376.2

Immunogen

Peptide with sequence C-KPEEEVDALLGKNK, from the C Terminus of the protein sequence according to NP_796376.2.

Please note the [peptide](#) is available for sale.

Purification and Storage

Purified from goat serum by ammonium sulphate precipitation followed by antigen affinity chromatography using the immunizing peptide.

Supplied at 0.5 mg/ml in Tris saline, 0.02% sodium azide, pH7.3 with 0.5% bovine serum albumin.

Aliquot and store at -20°C. Minimize freezing and thawing.

Applications Tested

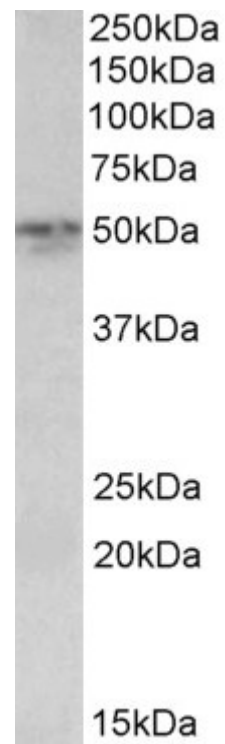
Peptide ELISA: antibody detection limit dilution 1:128000.

Western blot: Approx 50kDa band observed in Mouse Lung lysates (calculated MW of 47.2kDa according to Mouse NP_033333.2). Recommended concentration: 0.1-0.3µg/ml.

Species Reactivity

Tested: Mouse

Expected from sequence similarity: Human, Mouse, Rat, Cow



EB10577 (0.1µg/ml) staining of Mouse Lung lysate (35µg protein in RIPA buffer). Primary incubation was 1 hour.
Detected by chemiluminescence.