



## UK Office

### Everest Biotech Ltd

Cherwell Innovation Centre  
77 Heyford Park  
Upper Heyford  
Oxfordshire  
OX25 5HD  
UK

Enquiries:

[info@everestbiotech.com](mailto:info@everestbiotech.com)

Sales:

[sales@everestbiotech.com](mailto:sales@everestbiotech.com)

Tech support:

[support@everestbiotech.com](mailto:support@everestbiotech.com)

Tel: +44 (0)1869 238326

Fax: +44 (0)1869 238327

## US Office

### Everest Biotech c/o Abcore

405 Maple Street, Suite A106  
Ramona,  
CA 92065  
USA

Inquiries:

[info@everestbiotech.com](mailto:info@everestbiotech.com)

Sales:

[usasales@everestbiotech.com](mailto:usasales@everestbiotech.com)

Tech support:

[support@everestbiotech.com](mailto:support@everestbiotech.com)

Tel: 888-320-4628 (toll-free)

Fax: 888-841-9041

[www.everestbiotech.com](http://www.everestbiotech.com)

**Research Use Only. Not for  
diagnostic or therapeutic use.**

## EB08253 - Goat Anti-Synaptotagmin I Antibody

Size: 100µg specific antibody in 200µl



### Target Protein

**Principal Names:** synaptotagmin I, DKFZp781D2042, SYT1, P65, SVP65, SYT, synaptotagmin 1

**Official Symbol:** SYT1

**Accession Number(s):** NP\_005630.1

**Human GeneID(s):** [6857](#)

**Non-Human GeneID(s):** 20979 (mouse), 25716 (rat)

**Important Comments:** Reported isoforms NP\_005630.1, NP\_001129277.1 and NP\_001129278.1 represent identical protein.

### Immunogen

Peptide with sequence C-RDLQSAEKEEQEK, from the internal region of the protein sequence according to NP\_005630.1.

Please note the [peptide](#) is available for sale.

### Purification and Storage

Purified from goat serum by ammonium sulphate precipitation followed by antigen affinity chromatography using the immunizing peptide.

Supplied at 0.5 mg/ml in Tris saline, 0.02% sodium azide, pH7.3 with 0.5% bovine serum albumin.

Aliquot and store at -20°C. Minimize freezing and thawing.

### Applications Tested

**Peptide ELISA:** antibody detection limit dilution 1:2000.

**Western blot:** Approx. 65kDa band observed in Human Brain (hippocampus) and Mouse and Rat Brain lysates (calculated MW of 47.6kDa according to NP\_005630.1). The observed molecular weight corresponds to earlier findings in literature with different antibodies (Matthew et al, J Cell Biol. 1981 Oct;91(1):257-69.; PMID: 7298720).

Recommended concentration: 0.3-1µg/ml.

**IHC:** In paraffin embedded Human Brain shows vesicular staining in neuronal cell and axon. Recommended concentration: 4-6µg/ml.

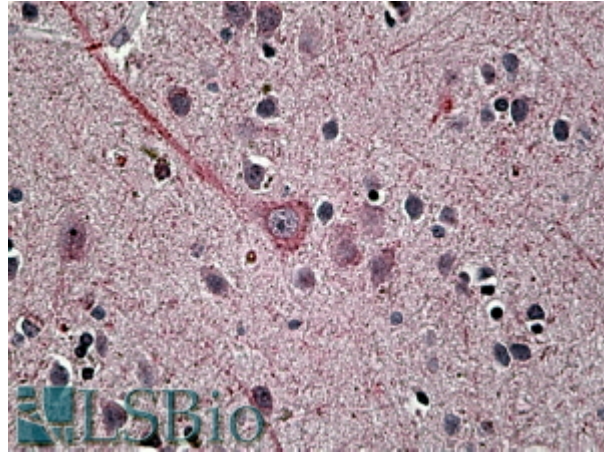
### Species Reactivity

**Tested:** Human

**Expected from sequence similarity:** Human, Mouse, Rat, Dog, Cow



EB08253 (1 $\mu$ g/ml) staining of Human Hippocampus lysate (35 $\mu$ g protein in RIPA buffer). Primary incubation was 1 hour. Detected by chemiluminescence.



EB08253 (3.8 $\mu$ g/ml) staining of paraffin embedded Human Brain. Steamed antigen retrieval with citrate buffer pH 6, AP-staining.