



UK Office

Everest Biotech Ltd

Cherwell Innovation Centre
77 Heyford Park
Upper Heyford
Oxfordshire
OX25 5HD
UK

Enquiries:

info@everestbiotech.com

Sales:

sales@everestbiotech.com

Tech support:

support@everestbiotech.com

Tel: +44 (0)1869 238326

Fax: +44 (0)1869 238327

US Office

Everest Biotech c/o Abcore

405 Maple Street, Suite A106
Ramona,
CA 92065
USA

Inquiries:

info@everestbiotech.com

Sales:

usasales@everestbiotech.com

Tech support:

support@everestbiotech.com

Tel: 888-320-4628 (toll-free)

Fax: 888-841-9041

www.everestbiotech.com

**Research Use Only. Not for
diagnostic or therapeutic use.**

EB11148 - Goat Anti-SYNGAP1 (aa60-72) Antibody

Size: 100µg specific antibody in 200µl



Target Protein

Principal Names: DKFZp761G1421, KIAA1938, MRD5, neuronal RasGAP, OTTHUMP00000209046, ras GTPase-activating protein SynGAP, RASA1, RASA5, synaptic Ras GTPase activating protein 1, synaptic Ras GTPase activating protein 1 homolog, synaptic Ras GTPase activating protein, 135kDa, synaptic Ras GTPase-activating protein 1, SYNGAP, SYNGAP1

Official Symbol: SYNGAP1

Accession Number(s): NP_006763.2

Human GeneID(s): [8831](#)

Non-Human GeneID(s): 240057 (mouse), 192117 (rat)

Immunogen

Peptide with sequence DEDEIHPLLIRDR-C, from the N Terminus of the protein sequence according to NP_006763.2.

Please note the [peptide](#) is available for sale.

Purification and Storage

Purified from goat serum by ammonium sulphate precipitation followed by antigen affinity chromatography using the immunizing peptide.

Supplied at 0.5 mg/ml in Tris saline, 0.02% sodium azide, pH7.3 with 0.5% bovine serum albumin.

Aliquot and store at -20°C. Minimize freezing and thawing.

Applications Tested

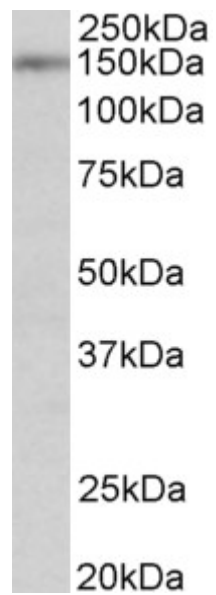
Peptide ELISA: antibody detection limit dilution 1:32000.

Western blot: Approx 150kDa band observed in Mouse Brain lysates (calculated MW of 148kDa according to Human NP_006763.2 and Mouse XP_990642.3). Recommended concentration: 1-3µg/ml.

Species Reactivity

Tested: Mouse

Expected from sequence similarity: Human, Mouse, Rat, Dog, Pig, Cow



EB11148 (2 μ g/ml) staining of Mouse Brain lysate (35 μ g protein in RIPA buffer). Primary incubation was 1 hour.
Detected by chemiluminescence.