



UK Office

Everest Biotech Ltd

Cherwell Innovation Centre
77 Heyford Park
Upper Heyford
Oxfordshire
OX25 5HD
UK

Enquiries:

info@everestbiotech.com

Sales:

sales@everestbiotech.com

Tech support:

support@everestbiotech.com

Tel: +44 (0)1869 238326

www.everestbiotech.com

**Research Use Only. Not for
diagnostic or therapeutic use.**

EB09822 - Goat Anti-SYVN1 Antibody

Size: 100µg specific antibody in 200µl



Target Protein

Principal Names: HRD1, KIAA1810, MGC40372, synovial apoptosis inhibitor 1, synoviolin, synoviolin 1, SYVN1

Official Symbol: SYVN1

Accession Number(s): NP_115807.1; NP_757385.1

Human GeneID(s): [84447](#)

Non-Human GeneID(s): 361712 (rat)

Important Comments: This antibody is expected to recognize isoforms a and b (NP_115807.1; NP_757385.1).

Immunogen

Peptide with sequence C-RALEGHERQHLE, from the internal region of the protein sequence according to NP_115807.1; NP_757385.1.

Please note the [peptide](#) is available for sale.

Purification and Storage

Purified from goat serum by ammonium sulphate precipitation followed by antigen affinity chromatography using the immunizing peptide.

Supplied at 0.5 mg/ml in Tris saline, 0.02% sodium azide, pH7.3 with 0.5% bovine serum albumin.

Aliquot and store at -20°C. Minimize freezing and thawing.

Applications Tested

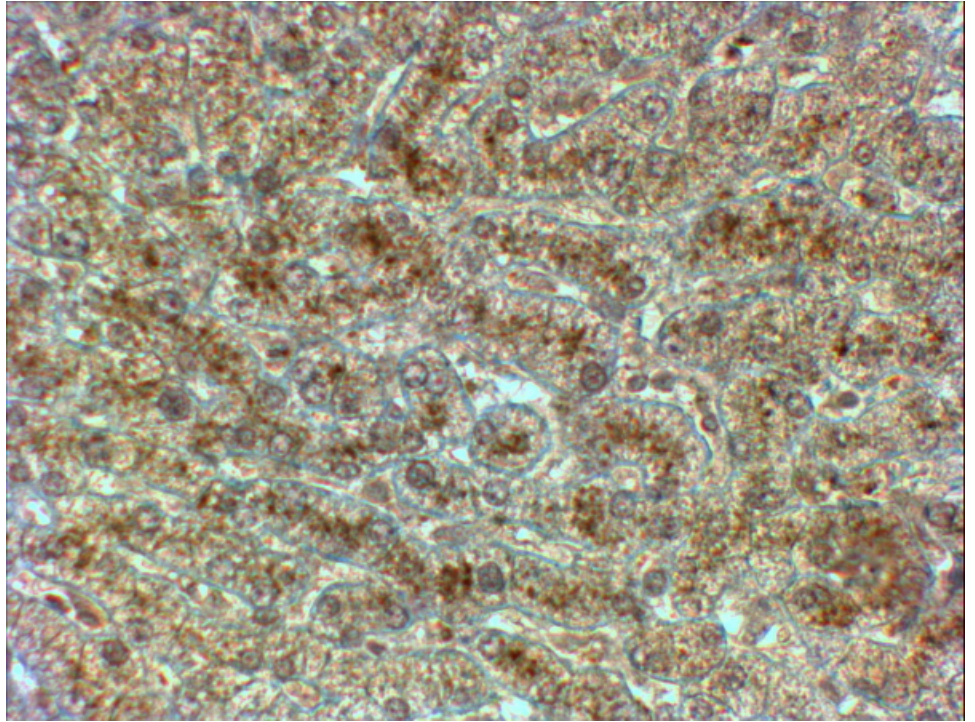
Peptide ELISA: antibody detection limit dilution 1:32000.

IHC: In paraffin embedded Human Liver shows textured cytoplasm staining in hepatocytes. Recommended concentration, 2-4µg/ml.

Species Reactivity

Tested: Human

Expected from sequence similarity: Human, Rat



EB09822 (2µg/ml) staining of paraffin embedded Human Liver. Steamed antigen retrieval with citrate buffer pH 6, HRP-staining.