

## UK Office

### Everest Biotech Ltd

Cherwell Innovation Centre  
77 Heyford Park  
Upper Heyford  
Oxfordshire  
OX25 5HD  
UK

Enquiries:

[info@everestbiotech.com](mailto:info@everestbiotech.com)

Sales:

[sales@everestbiotech.com](mailto:sales@everestbiotech.com)

Tech support:

[support@everestbiotech.com](mailto:support@everestbiotech.com)

Tel: +44 (0)1869 238326

[www.everestbiotech.com](http://www.everestbiotech.com)

**Research Use Only. Not for  
diagnostic or therapeutic use.**

## EB09594 - Goat Anti-TAF7L Antibody

Size: 100µg specific antibody in 200µl



### Target Protein

**Principal Names:** TAF7L, TAF7-like RNA polymerase II, TATA box binding protein (TBP)-associated factor, 50kDa, FLJ23157, TAF2Q, dJ738A13.1, OTTHUMP00000023675, TAF7-like RNA polymerase II, TATA box binding protein (TBP)-associated factor, 50 kD, TATA box binding protein (TBP)-associated factor, RNA polymerase II, Q, TATA box binding protein-associated factor, RNA polymerase II, Q, TBP-associated factor, RNA polymerase II, Q

**Official Symbol:** TAF7L

**Accession Number(s):** NP\_079161.2

**Human GeneID(s):** [54457](#)

### Immunogen

Peptide with sequence C-NHFQSVLEQLQLEK, from the internal region (near C Terminus) of the protein sequence according to NP\_079161.2.

Please note the [peptide](#) is available for sale.

### Purification and Storage

Purified from goat serum by ammonium sulphate precipitation followed by antigen affinity chromatography using the immunizing peptide.

Supplied at 0.5 mg/ml in Tris saline, 0.02% sodium azide, pH7.3 with 0.5% bovine serum albumin.

Aliquot and store at -20°C. Minimize freezing and thawing.

### Applications Tested

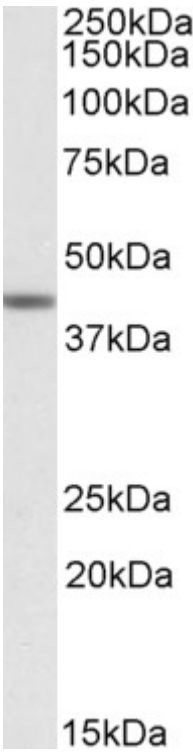
**Peptide ELISA:** antibody detection limit dilution 1:16000.

**Western blot:** Approx 40kDa band observed in Human Testis lysates (calculated MW of 52.6kDa according to NP\_079161.2). This molecular weight is routinely observed by other sources. Recommended concentration: 0.3-1µg/ml.

### Species Reactivity

**Tested:** Human

**Expected from sequence similarity:** Human



EB09594 (1 $\mu$ g/ml) staining of Human Testis lysate (35 $\mu$ g protein in RIPA buffer). Primary incubation was 1 hour. Detected by chemiluminescence.