



## International Office

### Everest Biotech Ltd

Vector Laboratories, Inc.  
6737 Mowry Ave  
Newark, CA 94560  
United States

Customer Service:

[customerservice@vectorlabs.com](mailto:customerservice@vectorlabs.com)

Technical Service:

[technical@vectorlabs.com](mailto:technical@vectorlabs.com)

Tel: +1 (800) 227-6666

[www.everestbiotech.com](http://www.everestbiotech.com)

**Research Use Only. Not for  
diagnostic or therapeutic use.**

## EB06954 - Goat Anti-Tafazzin Antibody

Size: 100µg specific antibody in 200µl



### Target Protein

**Principal Names:** TAZ, tafazzin (cardiomyopathy, dilated 3A (X-linked) endocardial fibroelastosis 2 Barth syndrome), HGNC:11577, BTHS, CMD3A, EFE, EFE2, G4.5, XAP-2, OTTHUMP00000061673, cardiomyopathy, dilated 3A (X-linked), tafazzin, XX-FW83563B9.3, FLJ27390, Taz1, LVNCX

**Official Symbol:** TAZ

**Accession Number(s):** NP\_000107.1; NP\_851828.1; NP\_851829.1; NP\_851830.1

**Human GeneID(s):** [6901](#)

**Important Comments:** This antibody is expected to recognise isoforms 1 to 4 (NP\_000107.1; NP\_851828.1; NP\_851829.1; NP\_851830.1, respectively).

### Immunogen

Peptide with sequence C-HLKTQAEQLHNNH, from the C Terminus of the protein sequence according to NP\_000107.1; NP\_851828.1; NP\_851829.1; NP\_851830.1.

Please note the [peptide](#) is available for sale.

### Purification and Storage

Purified from goat serum by ammonium sulphate precipitation followed by antigen affinity chromatography using the immunizing peptide.

Supplied at 0.5 mg/ml in Tris saline, 0.02% sodium azide, pH7.3 with 0.5% bovine serum albumin.

Aliquot and store at -20°C. Minimize freezing and thawing.

### Applications Tested

**Peptide ELISA:** antibody detection limit dilution 1:64000.

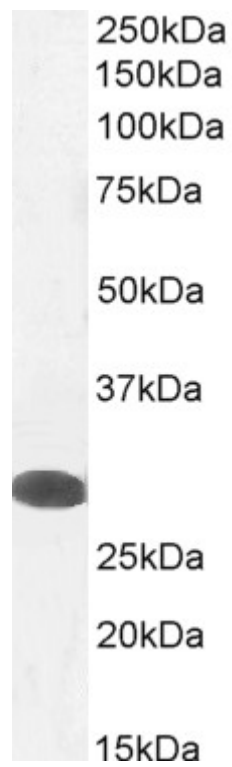
**Western blot:** Approx 28-30kDa band observed in Human Testis lysates (calculated MW of 30.2kDa according to NP\_851828.1, and 28.5 according to NP\_851830.1).

Recommended concentration: 0.3-1.0 µg/ml. Primary incubation 1 hour at room temperature.

### Species Reactivity

**Tested:** Human

**Expected from sequence similarity:** Human, Mouse, Rat, Dog



EB06954 (1µg/ml) staining of Human Testes lysate (35µg protein in RIPA buffer). Detected by chemiluminescence.