



UK Office

Everest Biotech Ltd

Cherwell Innovation Centre
77 Heyford Park
Upper Heyford
Oxfordshire
OX25 5HD
UK

Enquiries:

info@everestbiotech.com

Sales:

sales@everestbiotech.com

Tech support:

support@everestbiotech.com

Tel: +44 (0)1869 238326

Fax: +44 (0)1869 238327

US Office

Everest Biotech c/o Abcore

405 Maple Street, Suite A106
Ramona,
CA 92065
USA

Inquiries:

info@everestbiotech.com

Sales:

usasales@everestbiotech.com

Tech support:

support@everestbiotech.com

Tel: 888-320-4628 (toll-free)

Fax: 888-841-9041

www.everestbiotech.com

**Research Use Only. Not for
diagnostic or therapeutic use.**

EB06954 - Goat Anti-Tafazzin Antibody

Size: 100µg specific antibody in 200µl



Target Protein

Principal Names: TAZ, tafazzin (cardiomyopathy, dilated 3A (X-linked) endocardial fibroelastosis 2 Barth syndrome), HGNC:11577, BTHS, CMD3A, EFE, EFE2, G4.5, XAP-2, OTTHUMP00000061673, cardiomyopathy, dilated 3A (X-linked), tafazzin, XX-FW83563B9.3, FLJ27390, Taz1, LVNCX

Official Symbol: TAZ

Accession Number(s): NP_000107.1; NP_851828.1; NP_851829.1; NP_851830.1

Human GeneID(s): [6901](#)

Important Comments: This antibody is expected to recognise isoforms 1 to 4 (NP_000107.1; NP_851828.1; NP_851829.1; NP_851830.1, respectively).

Immunogen

Peptide with sequence C-HLKTQAEQLHNNH, from the C Terminus of the protein sequence according to NP_000107.1; NP_851828.1; NP_851829.1; NP_851830.1.

Please note the [peptide](#) is available for sale.

Purification and Storage

Purified from goat serum by ammonium sulphate precipitation followed by antigen affinity chromatography using the immunizing peptide.

Supplied at 0.5 mg/ml in Tris saline, 0.02% sodium azide, pH7.3 with 0.5% bovine serum albumin.

Aliquot and store at -20°C. Minimize freezing and thawing.

Applications Tested

Peptide ELISA: antibody detection limit dilution 1:64000.

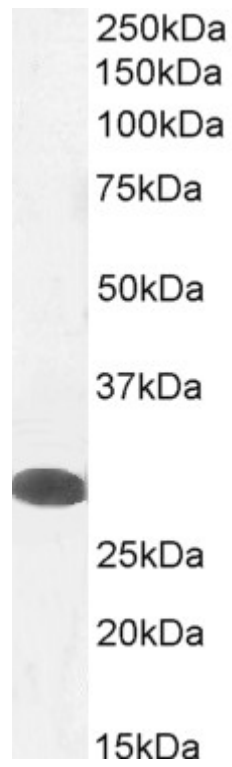
Western blot: Approx 28-30kDa band observed in Human Testis lysates (calculated MW of 30.2kDa according to NP_851828.1, and 28.5 according to NP_851830.1).

Recommended concentration: 0.3-1.0 µg/ml. Primary incubation 1 hour at room temperature.

Species Reactivity

Tested: Human

Expected from sequence similarity: Human, Mouse, Rat, Dog



EB06954 (1 μ g/ml) staining of Human Testes lysate (35 μ g protein in RIPA buffer). Detected by chemiluminescence.