



EB07264 - Goat Anti-TAK1 / MAP3K7 Antibody

Size: 100µg specific antibody in 200µl



UK Office

Everest Biotech Ltd

Cherwell Innovation Centre
77 Heyford Park
Upper Heyford
Oxfordshire
OX25 5HD
UK

Enquiries:

info@everestbiotech.com

Sales:

sales@everestbiotech.com

Tech support:

support@everestbiotech.com

Tel: +44 (0)1869 238326

Fax: +44 (0)1869 238327

US Office

Everest Biotech c/o Abcore

405 Maple Street, Suite A106
Ramona,
CA 92065
USA

Inquiries:

info@everestbiotech.com

Sales:

usasales@everestbiotech.com

Tech support:

support@everestbiotech.com

Tel: 888-320-4628 (toll-free)

Fax: 888-841-9041

www.everestbiotech.com

**Research Use Only. Not for
diagnostic or therapeutic use.**

Target Protein

Principal Names: MAP3K7, TAK1, mitogen-activated protein kinase kinase kinase 7, TGF1a, TGF-beta activated kinase 1, transforming growth factor-beta-activated kinase 1

Official Symbol: MAP3K7

Accession Number(s): NP_003179.1; NP_663304.1

Human GeneID(s): [6885](#)

Non-Human GeneID(s): 26409 (mouse)

Important Comments: This antibody is expected to recognise isoform A (NP_003179.1) and isoform B (NP_663304.1).

Immunogen

Peptide with sequence C-AELDQDEKDQQNT, from the internal region of the protein sequence according to NP_003179.1; NP_663304.1.

Please note the [peptide](#) is available for sale.

Purification and Storage

Purified from goat serum by ammonium sulphate precipitation followed by antigen affinity chromatography using the immunizing peptide.

Supplied at 0.5 mg/ml in Tris saline, 0.02% sodium azide, pH7.3 with 0.5% bovine serum albumin.

Aliquot and store at -20°C. Minimize freezing and thawing.

Applications Tested

Peptide ELISA: antibody detection limit dilution 1:8000.

Western blot: Approx 75kDa band observed in lysates of cell lines HeLa, Daudi and NIH3T3, and approx. 80kDa in lysates of cell line U937 (calculated MW of 67.2 according to Human NP_663304.1 and Mouse NP_033342.1). This molecular weight is routinely observed by other sources. Recommended concentration: 1-3µg/ml. Primary incubation 1 hour at room temperature.

Flow Cytometry: Flow cytometric analysis of HeLa cells. Recommended concentration: 10ug/ml.

Species Reactivity

Tested: Human, Mouse

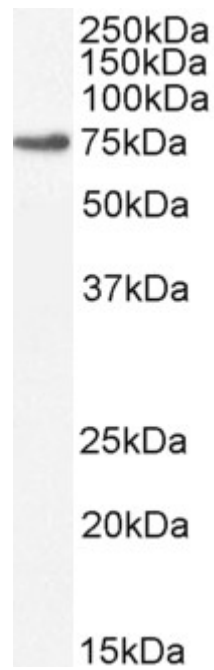
Expected from sequence similarity: Human, Mouse, Rat, Cow

Specific Reference

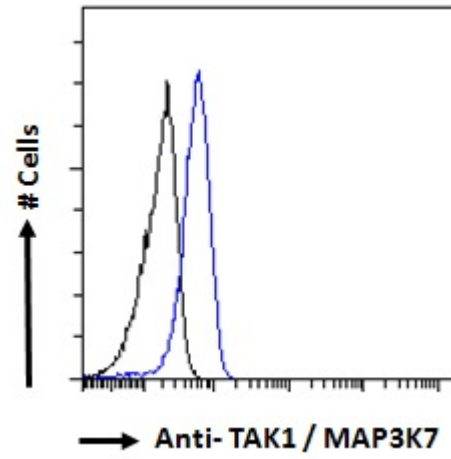
PMID: 0



EB07264 (1 μ g/ml) staining of HeLa (A) and U937 (B) and (2 μ g/ml) Daudi (C) cell lysate (35 μ g protein in RIPA buffer). Detected by chemiluminescence.



EB07264 (2 μ g/ml) staining of NIH3T3 cell lysate (35 μ g protein in RIPA buffer). Detected by chemiluminescence.



EB07264 Flow cytometric analysis of paraformaldehyde fixed HeLa cells (blue line), permeabilized with 0.5% Triton. Primary incubation 1hr (10ug/ml) followed by Alexa Fluor 488 secondary antibody (1ug/ml). IgG control: Unimmunized goat IgG (black line) followed by Alexa Fluor 488 secondary antibody.