



## International Office

### Everest Biotech Ltd

Vector Laboratories, Inc.  
6737 Mowry Ave  
Newark, CA 94560  
United States

Customer Service:

[customerservice@vectorlabs.com](mailto:customerservice@vectorlabs.com)

Technical Service:

[technical@vectorlabs.com](mailto:technical@vectorlabs.com)

Tel: +1 (800) 227-6666

[www.everestbiotech.com](http://www.everestbiotech.com)

**Research Use Only. Not for  
diagnostic or therapeutic use.**

## EB09569 - Goat Anti-Talin 1 / TLN1 Antibody

Size: 100µg specific antibody in 200µl



### Target Protein

**Principal Names:** TLN1, talin 1, ILWEQ, KIAA1027, TLN

**Official Symbol:** TLN1

**Accession Number(s):** NP\_006280.3

**Human GeneID(s):** [7094](#)

**Non-Human GeneID(s):** 21894 (mouse), 313494 (rat)

**Important Comments:** This antibody is not expected to cross-react with the highly similar protein Talin 2.

### Immunogen

Peptide with sequence C-QEALHTQMLTAVQE, from the internal region of the protein sequence according to NP\_006280.3.

Please note the [peptide](#) is available for sale.

### Purification and Storage

Purified from goat serum by ammonium sulphate precipitation followed by antigen affinity chromatography using the immunizing peptide.

Supplied at 0.5 mg/ml in Tris saline, 0.02% sodium azide, pH7.3 with 0.5% bovine serum albumin.

Aliquot and store at -20°C. Minimize freezing and thawing.

### Applications Tested

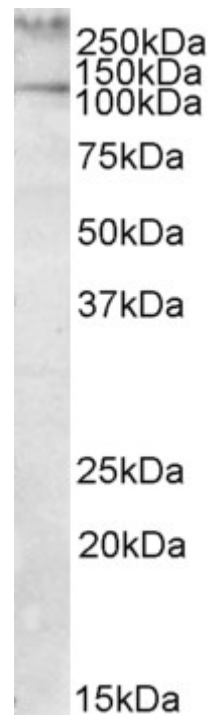
**Peptide ELISA:** antibody detection limit dilution 1:8000.

**Western blot:** A >250kDa band observed in Human Peripheral Mononucleocyte lysates (calculated MW of 270kDa according to NP\_006280.3). Recommended concentration: 1-3µg/ml. An additional band of unknown identity was also consistently observed at 110kDa. This band was successfully blocked by incubation with the immunizing peptide.

### Species Reactivity

**Tested:** Human

**Expected from sequence similarity:** Human, Mouse, Rat, Dog, Cow



EB09569 (1µg/ml) staining of Human Peripheral Mononucleocytes lysate (35µg protein in RIPA buffer). Primary incubation was 1 hour. Detected by chemiluminescence.