



## International Office

### Everest Biotech Ltd

Vector Laboratories, Inc.  
6737 Mowry Ave  
Newark, CA 94560  
United States

Customer Service:

[customerservice@vectorlabs.com](mailto:customerservice@vectorlabs.com)

Technical Service:

[technical@vectorlabs.com](mailto:technical@vectorlabs.com)

Tel: +1 (800) 227-6666

[www.everestbiotech.com](http://www.everestbiotech.com)

**Research Use Only. Not for  
diagnostic or therapeutic use.**

## EB11402 - Goat Anti-TBP /Transcription factor IID (aa39-50) Antibody

Size: 100µg specific antibody in 200µl



### Target Protein

**Principal Names:** GTF2D, GTF2D1, HDL4, MGC117320, MGC126054, MGC126055, SCA17, TATA box binding protein, TATA sequence-binding protein, TATA-box binding protein N-terminal domain, TATA-box factor, TATA-box-binding protein, TFIID, transcription initiation factor TFIID TBP subunit, TBP

**Official Symbol:** TBP

**Accession Number(s):** NP\_003185.1; NP\_001165556.1

**Human GeneID(s):** [6908](#)

**Non-Human GeneID(s):** 21374 (mouse), 117526 (rat)

**Important Comments:** This antibody is expected to recognize both reported isoforms (NP\_003185.1; NP\_001165556.1).

### Immunogen

Peptide with sequence C-TPQPIQNTNSLS, from the internal region of the protein sequence according to NP\_003185.1; NP\_001165556.1.

Please note the [peptide](#) is available for sale.

### Purification and Storage

Purified from goat serum by ammonium sulphate precipitation followed by antigen affinity chromatography using the immunizing peptide.

Supplied at 0.5 mg/ml in Tris saline, 0.02% sodium azide, pH7.3 with 0.5% bovine serum albumin.

Aliquot and store at -20°C. Minimize freezing and thawing.

### Applications Tested

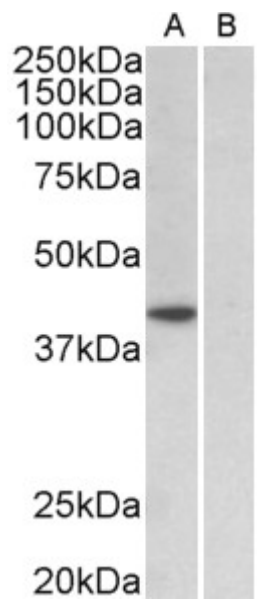
**Peptide ELISA:** antibody detection limit dilution 1:8000.

**Western blot:** Approx 40kDa band observed in nuclear, but not in cytosolic lysates of cell line HeLa (calculated MW of 37.7kDa according to NP\_003185.1) and 37kDa observed in lysates of NIH3T3 and of Mouse and Rat Testis lysates (calculated MW of 34.7kDa according to Mouse NP\_038712.3 and of 35.0kDa according to Rat NP\_001004198.1). Recommended concentration: 1-3µg/ml.

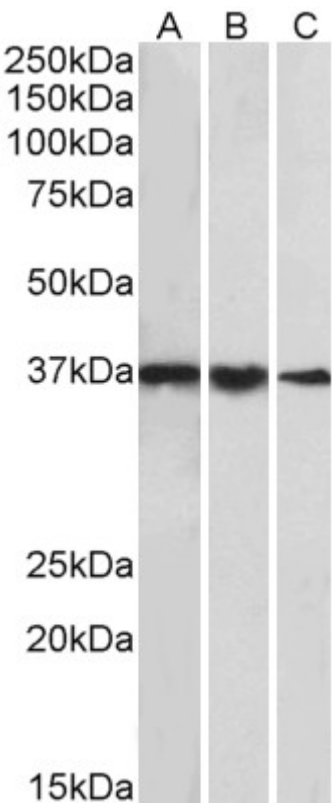
### Species Reactivity

**Tested:** Human, Mouse, Rat

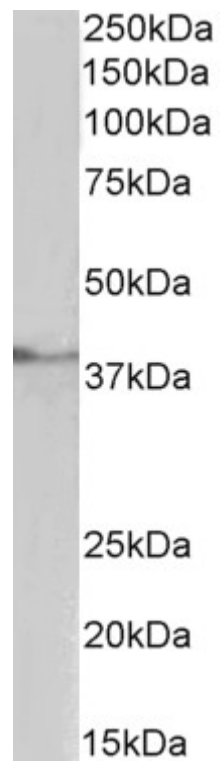
**Expected from sequence similarity:** Human, Mouse, Rat, Dog, Pig, Cow



EB11402 (1µg/ml) staining of HeLa nuclear (A) and cytosolic (B) lysates (35µg protein in RIPA buffer). Primary incubation was 1 hour. Detected by chemiluminescence.



EB11402 (1µg/ml) staining of cell line NIH3T3 (A), Mouse Testis (B) and Rat Testis (C) lysates (35µg protein in RIPA buffer). Primary incubation was 1 hour. Detected by chemiluminescence



EB11402 (1µg/ml) staining of Pig Testis lysate (35µg protein in RIPA buffer). Primary incubation was 1 hour.  
Detected by chemiluminescence