



UK Office

Everest Biotech Ltd

Cherwell Innovation Centre
77 Heyford Park
Upper Heyford
Oxfordshire
OX25 5HD
UK

Enquiries:

info@everestbiotech.com

Sales:

sales@everestbiotech.com

Tech support:

support@everestbiotech.com

Tel: +44 (0)1869 238326

Fax: +44 (0)1869 238327

US Office

Everest Biotech c/o Abcore

405 Maple Street, Suite A106
Ramona,
CA 92065
USA

Inquiries:

info@everestbiotech.com

Sales:

usasales@everestbiotech.com

Tech support:

support@everestbiotech.com

Tel: 888-320-4628 (toll-free)

Fax: 888-841-9041

www.everestbiotech.com

**Research Use Only. Not for
diagnostic or therapeutic use.**

EB11402 - Goat Anti-TBP /Transcription factor IID (aa39-50) Antibody

Size: 100µg specific antibody in 200µl



Target Protein

Principal Names: GTF2D, GTF2D1, HDL4, MGC117320, MGC126054, MGC126055, SCA17, TATA box binding protein, TATA sequence-binding protein, TATA-box binding protein N-terminal domain, TATA-box factor, TATA-box-binding protein, TFIID, transcription initiation factor TFIID TBP subunit, TBP

Official Symbol: TBP

Accession Number(s): NP_003185.1; NP_001165556.1

Human GeneID(s): [6908](#)

Non-Human GeneID(s): 21374 (mouse), 117526 (rat)

Important Comments: This antibody is expected to recognize both reported isoforms (NP_003185.1; NP_001165556.1).

Immunogen

Peptide with sequence C-TPQPIQNTNSLS, from the internal region of the protein sequence according to NP_003185.1; NP_001165556.1.

Please note the [peptide](#) is available for sale.

Purification and Storage

Purified from goat serum by ammonium sulphate precipitation followed by antigen affinity chromatography using the immunizing peptide.

Supplied at 0.5 mg/ml in Tris saline, 0.02% sodium azide, pH7.3 with 0.5% bovine serum albumin.

Aliquot and store at -20°C. Minimize freezing and thawing.

Applications Tested

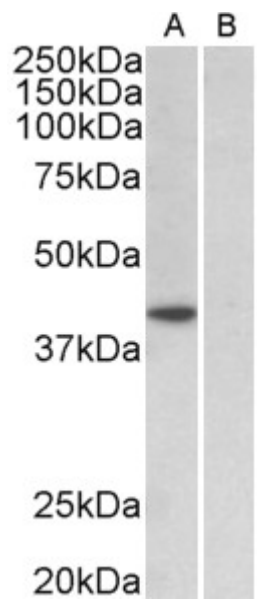
Peptide ELISA: antibody detection limit dilution 1:8000.

Western blot: Approx 40kDa band observed in nuclear, but not in cytosolic lysates of cell line HeLa (calculated MW of 37.7kDa according to NP_003185.1) and 37kDa observed in lysates of NIH3T3 and of Mouse and Rat Testis lysates (calculated MW of 34.7kDa according to Mouse NP_038712.3 and of 35.0kDa according to Rat NP_001004198.1). Recommended concentration: 1-3µg/ml.

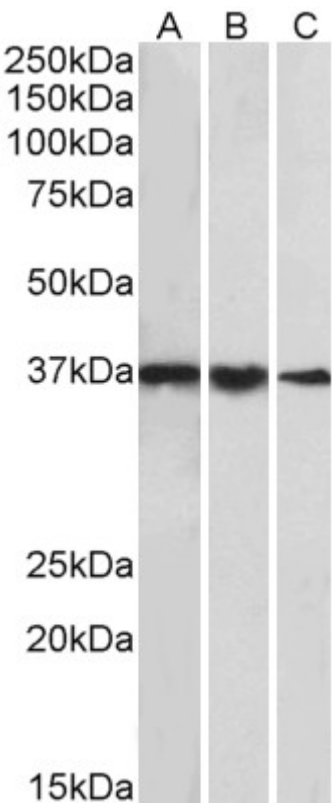
Species Reactivity

Tested: Human, Mouse, Rat

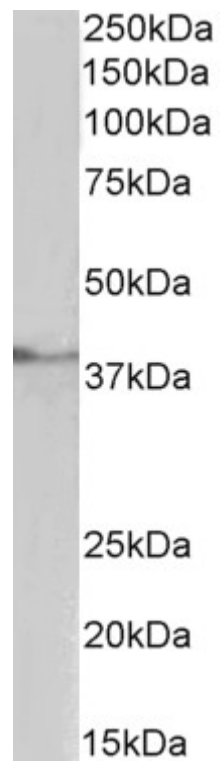
Expected from sequence similarity: Human, Mouse, Rat, Dog, Pig, Cow



EB11402 (1µg/ml) staining of HeLa nuclear (A) and cytosolic (B) lysates (35µg protein in RIPA buffer). Primary incubation was 1 hour. Detected by chemiluminescence.



EB11402 (1µg/ml) staining of cell line NIH3T3 (A), Mouse Testis (B) and Rat Testis (C) lysates (35µg protein in RIPA buffer). Primary incubation was 1 hour. Detected by chemiluminescence



EB11402 (1 μ g/ml) staining of Pig Testis lysate (35 μ g protein in RIPA buffer). Primary incubation was 1 hour.
Detected by chemiluminescence