



## International Office

### Everest Biotech Ltd

Vector Laboratories, Inc.  
6737 Mowry Ave  
Newark, CA 94560  
United States

Customer Service:

[customerservice@vectorlabs.com](mailto:customerservice@vectorlabs.com)

Technical Service:

[technical@vectorlabs.com](mailto:technical@vectorlabs.com)

Tel: +1 (800) 227-6666

[www.everestbiotech.com](http://www.everestbiotech.com)

**Research Use Only. Not for  
diagnostic or therapeutic use.**

## EB05614 - Goat Anti-TBPL1 / TLF / TRF2 Antibody

Size: 100µg specific antibody in 200µl



### Target Protein

**Principal Names:** TBPL1, TRF2, TBP-like 1, TLP, STUD, MGC:8389, MGC:9620, TBP-like protein, TBP-related factor 2, 21-kDA TBP-like protein, second TBP of unique DNA, TATA box binding protein-related factor 2, TLF

**Official Symbol:** TBPL1

**Accession Number(s):** NP\_004856.1

**Human GeneID(s):** [9519](#)

**Non-Human GeneID(s):** 237336 (mouse)

### Immunogen

Peptide with sequence C-QIYPFVFESRKEIL, from the C Terminus of the protein sequence according to NP\_004856.1.

Please note the [peptide](#) is available for sale.

### Purification and Storage

Purified from goat serum by ammonium sulphate precipitation followed by antigen affinity chromatography using the immunizing peptide.

Supplied at 0.5 mg/ml in Tris saline, 0.02% sodium azide, pH7.3 with 0.5% bovine serum albumin.

Aliquot and store at -20°C. Minimize freezing and thawing.

### Applications Tested

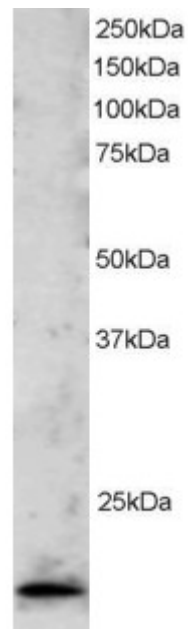
**Peptide ELISA:** antibody detection limit dilution 1:4000.

**Western blot:** Approx 20kDa band seen in Jurkat lysate [Predicted MW of 20kDa according to NP\_004856]. Recommended for use at 1-3µg/ml.

### Species Reactivity

**Tested:** Human

**Expected from sequence similarity:** Human, Mouse, Rat, Dog, Cow



EB05614 staining (2 $\mu$ g/ml) of Jurkat lysate (RIPA buffer, 30 $\mu$ g total protein per lane). Primary incubated for 1 hour. Detected by western blot using chemiluminescence.