



## UK Office

### Everest Biotech Ltd

Cherwell Innovation Centre  
77 Heyford Park  
Upper Heyford  
Oxfordshire  
OX25 5HD  
UK

Enquiries:

[info@everestbiotech.com](mailto:info@everestbiotech.com)

Sales:

[sales@everestbiotech.com](mailto:sales@everestbiotech.com)

Tech support:

[support@everestbiotech.com](mailto:support@everestbiotech.com)

Tel: +44 (0)1869 238326

[www.everestbiotech.com](http://www.everestbiotech.com)

**Research Use Only. Not for  
diagnostic or therapeutic use.**

## EB06701 - Goat Anti-HNF1A Antibody

Size: 100µg specific antibody in 200µl



### Target Protein

**Principal Names:** HNF1A, HNF1 homeobox A, HNF-1A, HNF1, TCF1, TCF-1, IDDM20, LFB1, MODY3, HNF-1-alpha, OTTHUMP00000198944, OTTHUMP00000240200, OTTHUMP00000240204, OTTHUMP00000240206, albumin proximal factor, hepatic nuclear factor 1, hepatocyte nuclear factor 1-alpha, interferon production regulator factor, liver-specific transcription factor LF-B1, transcription factor 1, hepatic

**Official Symbol:** HNF1A

**Accession Number(s):** NP\_000536.5

**Human GeneID(s):** [6927](#)

**Non-Human GeneID(s):** 21405 (mouse), 24817 (rat)

### Immunogen

Peptide with sequence C-VIETFISTQMASSSQ, from the C Terminus of the protein sequence according to NP\_000536.5.

Please note the [peptide](#) is available for sale.

### Purification and Storage

Purified from goat serum by ammonium sulphate precipitation followed by antigen affinity chromatography using the immunizing peptide.

Supplied at 0.5 mg/ml in Tris saline, 0.02% sodium azide, pH7.3 with 0.5% bovine serum albumin.

Aliquot and store at -20°C. Minimize freezing and thawing.

### Applications Tested

**Peptide ELISA:** antibody detection limit dilution 1:128000.

**Western blot:** Approx 70kDa band observed in Rat Liver and Mouse Liver lysates (calculated MW of 67.4kDa according to NP\_000536.5). Recommended concentration: 2-6µg/ml. Primary incubation 1 hour at room temperature.

**IHC:** In paraffin embedded Human Liver shows nuclear staining in hepatocytes. Recommended concentration, 2-4µg/ml.

**Immunofluorescence:** Strong expression of the protein seen in the Nucleus of NIH3T3 cells. Recommended concentration: 10µg/ml.

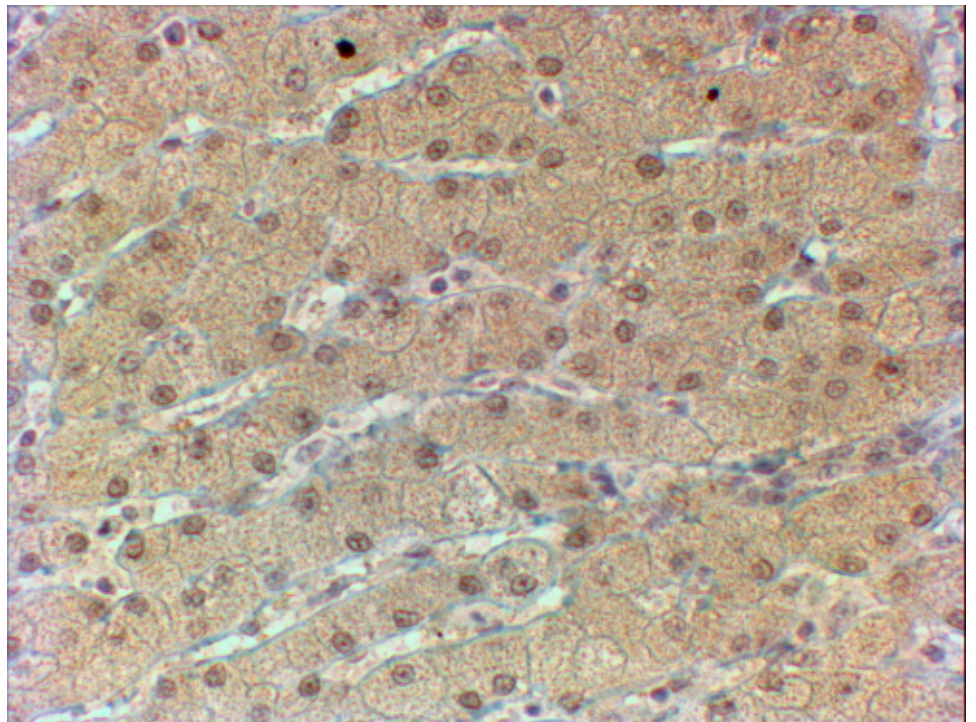
### Species Reactivity

**Tested:** Human, Mouse, Rat

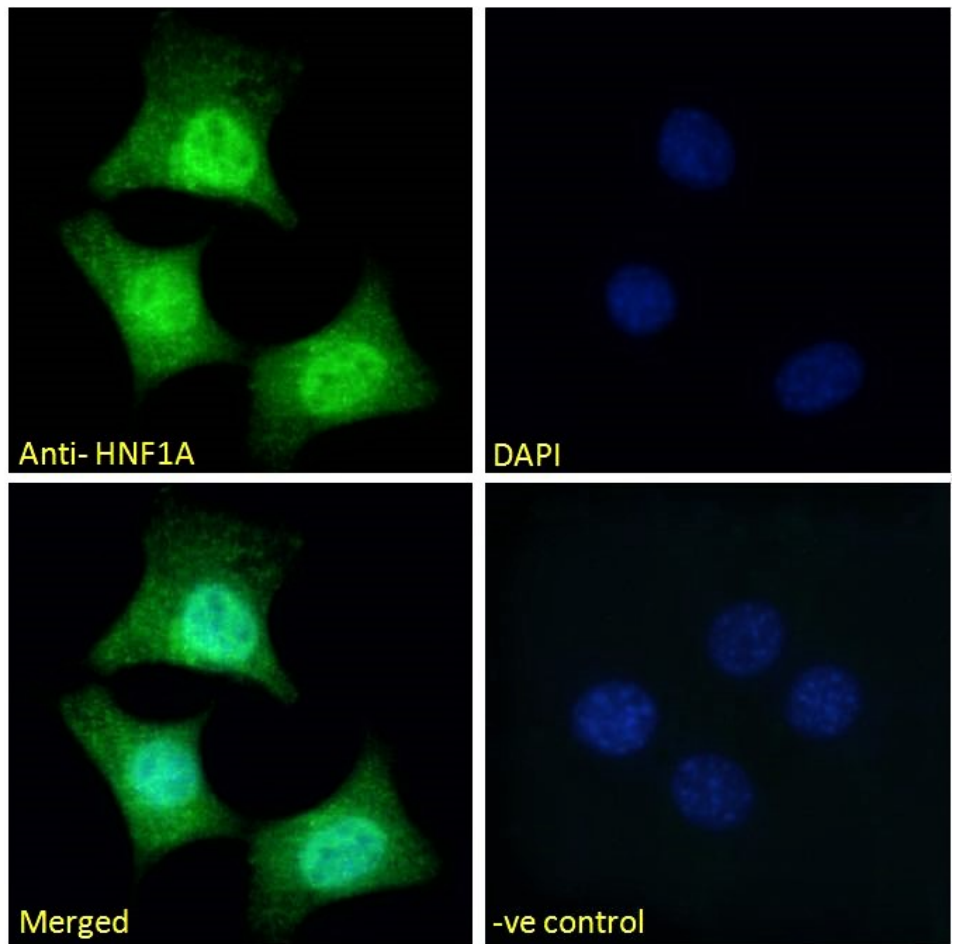
**Expected from sequence similarity:** Human, Mouse, Rat, Dog, Pig, Cow



EB06701 (2 $\mu$ g/ml) staining of Rat Liver (A) and Mouse Liver (B) lysates (35 $\mu$ g protein in RIPA buffer). Detected by chemiluminescence.



EB06701 (2 $\mu$ g/ml) staining of paraffin embedded Human Liver. Steamed antigen retrieval with Tris/EDTA buffer pH 9, HRP-staining.



EB06701 Immunofluorescence analysis of paraformaldehyde fixed NIH3T3 cells, permeabilized with 0.15% Triton. Primary incubation 1hr (10ug/ml) followed by Alexa Fluor 488 secondary antibody (2ug/ml), showing nuclear staining. The nuclear stain is DAPI (blue). Negative control: Unimmunized goat IgG (10ug/ ml) followed by Alexa Fluor 488 secondary antibody (2ug/ml).