



UK Office

Everest Biotech Ltd

Cherwell Innovation Centre
77 Heyford Park
Upper Heyford
Oxfordshire
OX25 5HD
UK

Enquiries:

info@everestbiotech.com

Sales:

sales@everestbiotech.com

Tech support:

support@everestbiotech.com

Tel: +44 (0)1869 238326

Fax: +44 (0)1869 238327

US Office

Everest Biotech c/o Abcore

405 Maple Street, Suite A106
Ramona,
CA 92065
USA

Inquiries:

info@everestbiotech.com

Sales:

usasales@everestbiotech.com

Tech support:

support@everestbiotech.com

Tel: 888-320-4628 (toll-free)

Fax: 888-841-9041

www.everestbiotech.com

**Research Use Only. Not for
diagnostic or therapeutic use.**

EB06701 - Goat Anti-HNF1A Antibody

Size: 100µg specific antibody in 200µl



Target Protein

Principal Names: HNF1A, HNF1 homeobox A, HNF-1A, HNF1, TCF1, TCF-1, IDDM20, LFB1, MODY3, HNF-1-alpha, OTTHUMP00000198944, OTTHUMP00000240200, OTTHUMP00000240204, OTTHUMP00000240206, albumin proximal factor, hepatic nuclear factor 1, hepatocyte nuclear factor 1-alpha, interferon production regulator factor, liver-specific transcription factor LF-B1, transcription factor 1, hepatic

Official Symbol: HNF1A

Accession Number(s): NP_000536.5

Human GeneID(s): [6927](#)

Non-Human GeneID(s): 21405 (mouse), 24817 (rat)

Immunogen

Peptide with sequence C-VIETFISTQMASSSQ, from the C Terminus of the protein sequence according to NP_000536.5.

Please note the [peptide](#) is available for sale.

Purification and Storage

Purified from goat serum by ammonium sulphate precipitation followed by antigen affinity chromatography using the immunizing peptide.

Supplied at 0.5 mg/ml in Tris saline, 0.02% sodium azide, pH7.3 with 0.5% bovine serum albumin.

Aliquot and store at -20°C. Minimize freezing and thawing.

Applications Tested

Peptide ELISA: antibody detection limit dilution 1:128000.

Western blot: Approx 70kDa band observed in Rat Liver and Mouse Liver lysates (calculated MW of 67.4kDa according to NP_000536.5). Recommended concentration: 2-6µg/ml. Primary incubation 1 hour at room temperature.

IHC: In paraffin embedded Human Liver shows nuclear staining in hepatocytes. Recommended concentration, 2-4µg/ml.

Immunofluorescence: Strong expression of the protein seen in the Nucleus of NIH3T3 cells. Recommended concentration: 10µg/ml.

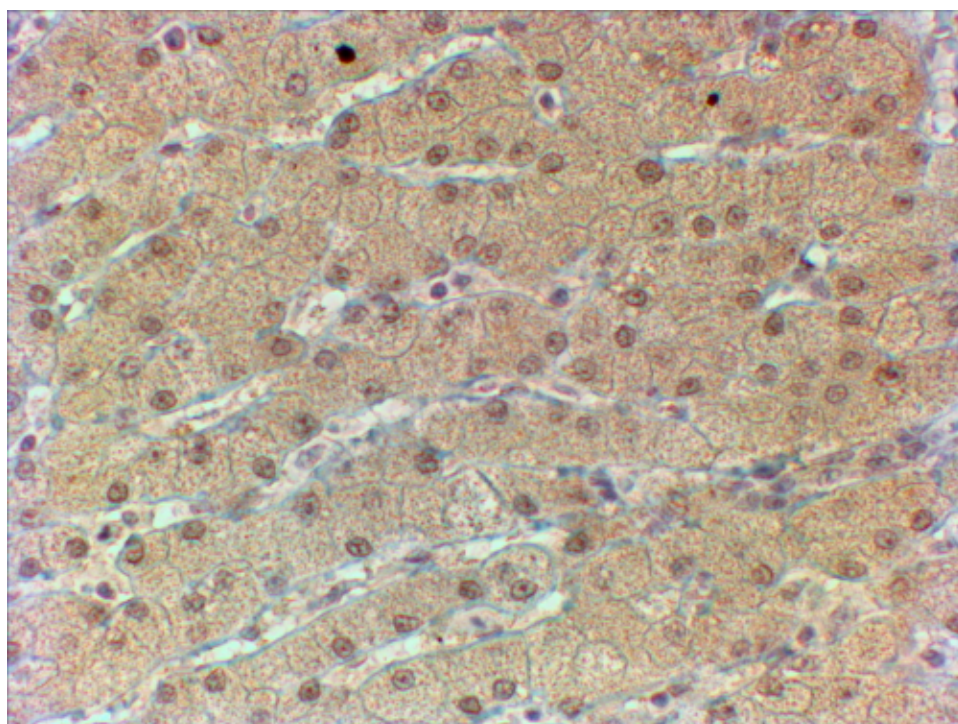
Species Reactivity

Tested: Human, Mouse, Rat

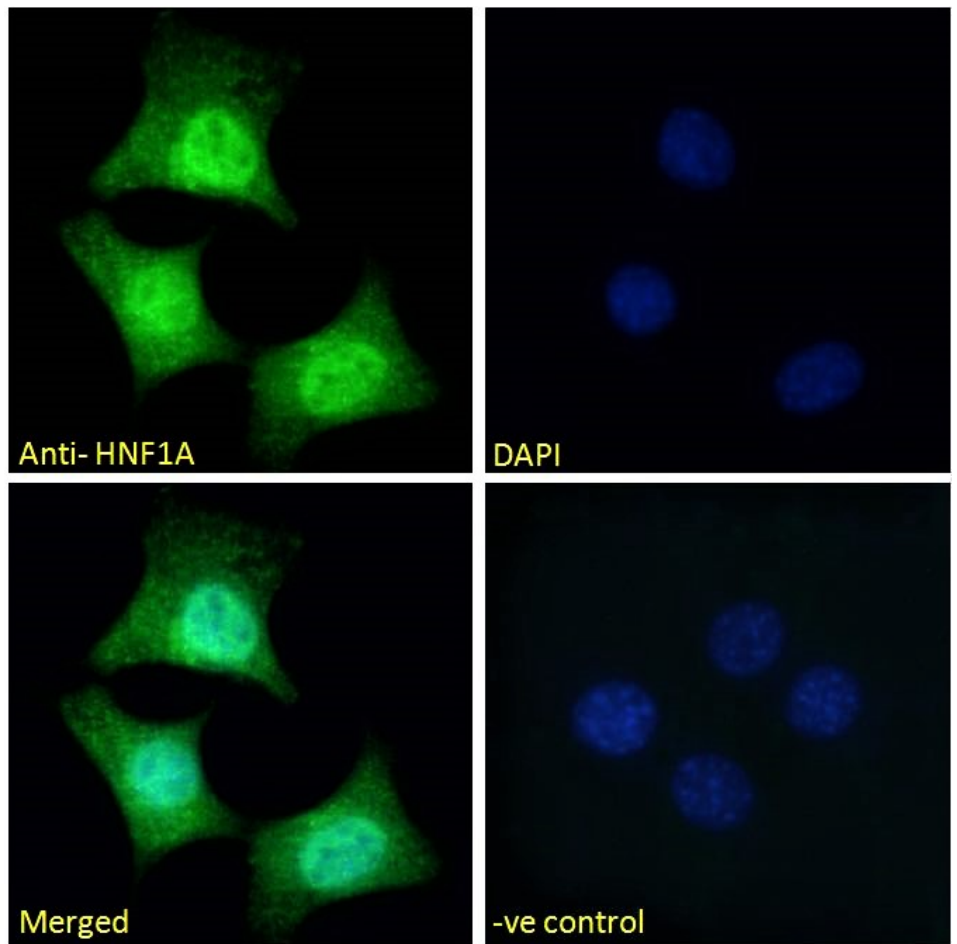
Expected from sequence similarity: Human, Mouse, Rat, Dog, Pig, Cow



EB06701 (2 μ g/ml) staining of Rat Liver (A) and Mouse Liver (B) lysates (35 μ g protein in RIPA buffer). Detected by chemiluminescence.



EB06701 (2 μ g/ml) staining of paraffin embedded Human Liver. Steamed antigen retrieval with Tris/EDTA buffer pH 9, HRP-staining.



EB06701 Immunofluorescence analysis of paraformaldehyde fixed NIH3T3 cells, permeabilized with 0.15% Triton. Primary incubation 1hr (10ug/ml) followed by Alexa Fluor 488 secondary antibody (2ug/ml), showing nuclear staining. The nuclear stain is DAPI (blue). Negative control: Unimmunized goat IgG (10ug/ ml) followed by Alexa Fluor 488 secondary antibody (2ug/ml).