



UK Office

Everest Biotech Ltd

Cherwell Innovation Centre
77 Heyford Park
Upper Heyford
Oxfordshire
OX25 5HD
UK

Enquiries:

info@everestbiotech.com

Sales:

sales@everestbiotech.com

Tech support:

support@everestbiotech.com

Tel: +44 (0)1869 238326

www.everestbiotech.com

**Research Use Only. Not for
diagnostic or therapeutic use.**

EB07934 - Goat Anti-Tcfec (mouse) Antibody

Size: 100µg specific antibody in 200µl



Target Protein

Principal Names: Tcfec, transcription factor EC, BB107417, MGC107474, TFEC

Official Symbol: Tcfec

Accession Number(s): NP_112475.1

Non-Human GeneID(s): 21426 (mouse), 26296 (rat)

Immunogen

Peptide with sequence C-HITKQQTHPERN, from the internal region of the protein sequence according to NP_112475.1.

Please note the [peptide](#) is available for sale.

Purification and Storage

Purified from goat serum by ammonium sulphate precipitation followed by antigen affinity chromatography using the immunizing peptide.

Supplied at 0.5 mg/ml in Tris saline, 0.02% sodium azide, pH7.3 with 0.5% bovine serum albumin.

Aliquot and store at -20°C. Minimize freezing and thawing.

Applications Tested

Peptide ELISA: antibody detection limit dilution 1:32000.

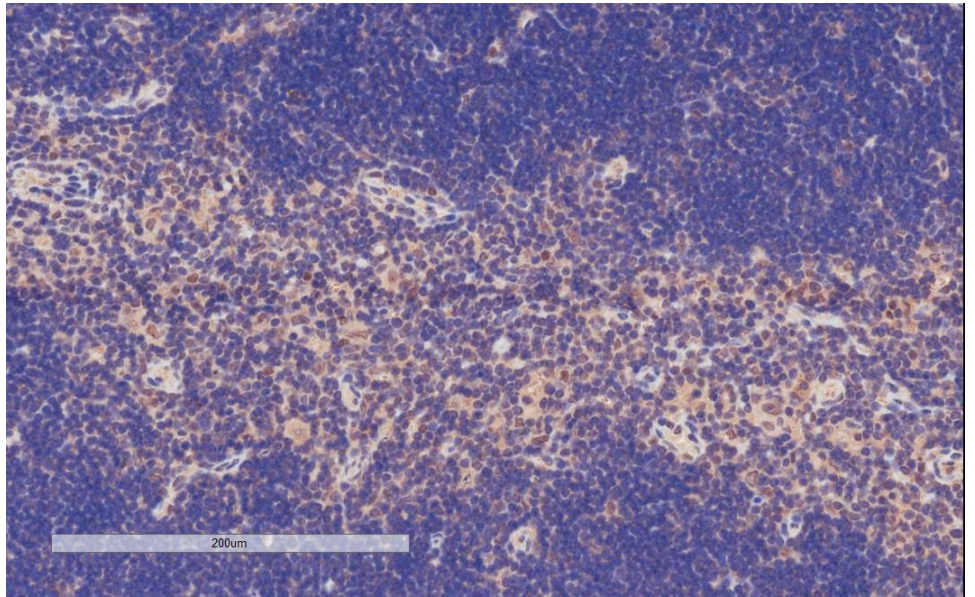
Western blot: Preliminary experiments gave one band at approx 37kDa and much stronger bands at approx 70+28kDa in Mouse Testis lysates after 0.5 µg/ml antibody staining. Please note that currently we cannot find an explanation in the literature for the stronger bands we observe given the calculated size of 35.1kDa according to Mouse NP_112475.1. All detected bands were successfully blocked by incubation with the immunizing peptide (and BLAST results with the immunizing peptide sequence did not identify any other proteins to explain the additional bands).

IHC: In paraffin embedded Mouse Thymus shows nuclear staining in sporadic cells of the medulla. Recommended concentration: 4-6µg/ml. Paraffin embedded Human Kidney and Spleen. Recommended concentration: 5µg/ml.

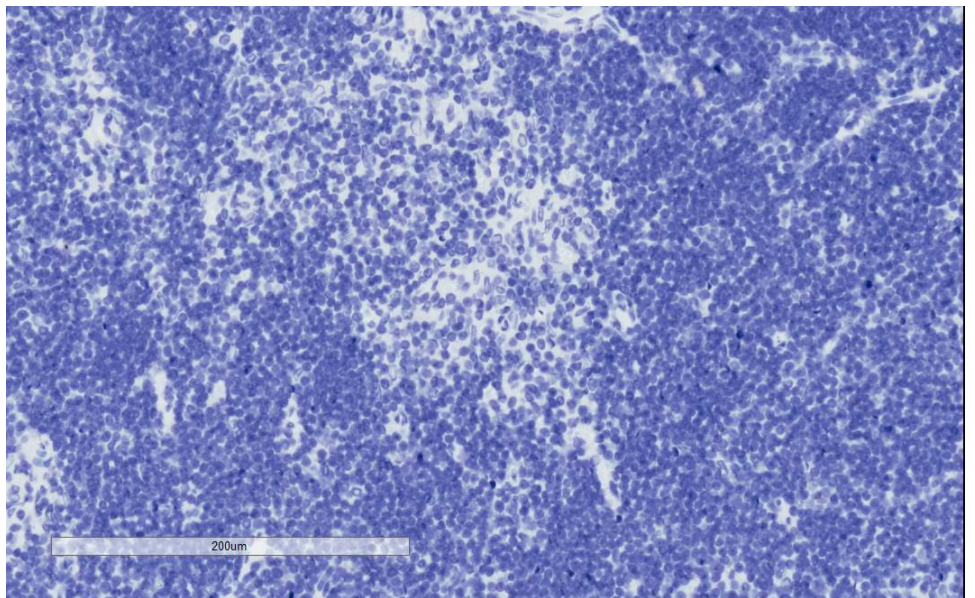
Species Reactivity

Tested: Mouse, Human

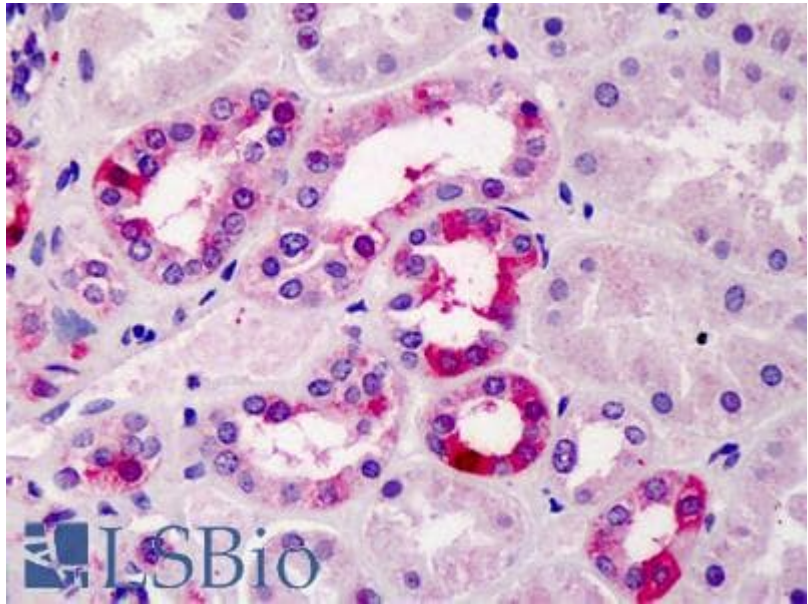
Expected from sequence similarity: Mouse, Rat



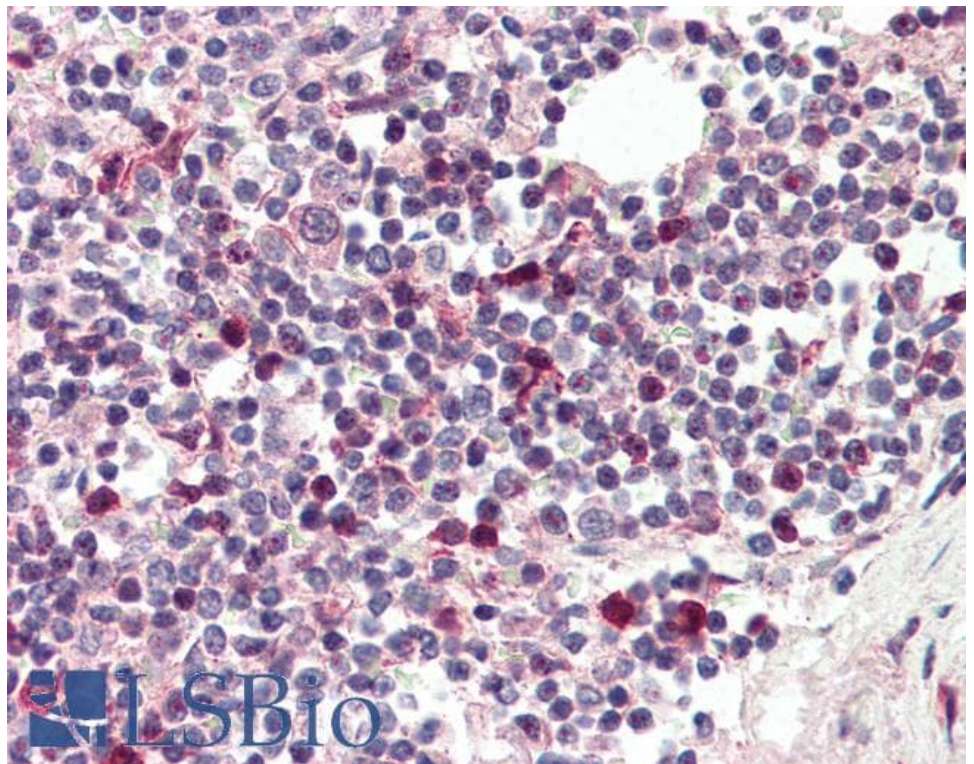
EB07934 (4µg/ml) staining of paraffin embedded Mouse Thymus. Microwaved antigen retrieval with citrate buffer pH 6, HRP-staining.



EB07934 Negative Control showing staining of paraffin embedded Mouse Thymus, with no primary antibody.



EB07934 (5µg/ml) staining of paraffin embedded Human Kidney. Steamed antigen retrieval with citrate buffer pH 6, AP-staining.



EB07934 (5µg/ml) staining of paraffin embedded Human Spleen. Steamed antigen retrieval with citrate buffer pH 6, AP-staining.