



## UK Office

### Everest Biotech Ltd

Cherwell Innovation Centre  
77 Heyford Park  
Upper Heyford  
Oxfordshire  
OX25 5HD  
UK

Enquiries:

[info@everestbiotech.com](mailto:info@everestbiotech.com)

Sales:

[sales@everestbiotech.com](mailto:sales@everestbiotech.com)

Tech support:

[support@everestbiotech.com](mailto:support@everestbiotech.com)

Tel: +44 (0)1869 238326

[www.everestbiotech.com](http://www.everestbiotech.com)

**Research Use Only. Not for  
diagnostic or therapeutic use.**

## EB06277-T - Goat Anti-TCP1 Antibody - Trial

Size: 20µg specific antibody in 40µl



### Target Protein

**Principal Names:** TCP1, t-complex 1, CCT-alpha, CCT1, CCTa, D6S230E, TCP-1-alpha, T-complex protein 1, T-complex protein 1, alpha subunit, tailless complex polypeptide 1

**Official Symbol:** TCP1

**Accession Number(s):** NP\_110379.2; NP\_001008897.1

**Human GeneID(s):** [6950](#)

**Important Comments:** This antibody is expected to recognise both reported isoforms.

### Immunogen

Peptide with sequence C-SYEDAVHSGALND, from the C Terminus of the protein sequence according to NP\_110379.2; NP\_001008897.1.

Please note the [peptide](#) is available for sale.

### Purification and Storage

Purified from goat serum by ammonium sulphate precipitation followed by antigen affinity chromatography using the immunizing peptide.

Supplied at 0.5 mg/ml in Tris saline, 0.02% sodium azide, pH7.3 with 0.5% bovine serum albumin.

Aliquot and store at -20°C. Minimize freezing and thawing.

### Applications Tested

**Peptide ELISA:** antibody detection limit dilution 1:32000.

**Western blot:** Approx 60kDa band observed in lysates of cell line HEK293 and in Human Ovary lysates (calculated MW of 60.3kDa according to NP\_110379.2). Recommended concentration: 0.3-1µg/ml. Primary incubation 1 hour at room temperature.

**IHC:** In paraffin embedded Human Testis shows only cytoplasmic staining in some germ cells, and both cytoplasmic and nuclear staining in other germ cells with unstained nucleoli. Recommended concentration: 1-2µg/ml.

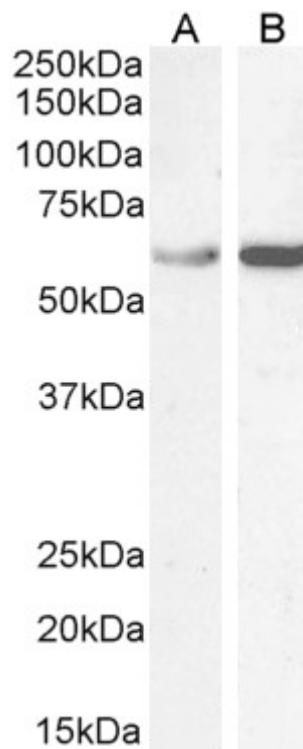
**Immunofluorescence:** Strong expression of the protein seen in the cytoplasm and nuclei of HeLa cells. Recommended concentration: 10µg/ml.

**Flow Cytometry:** Flow cytometric analysis of HeLa cells. Recommended concentration: 10ug/ml.

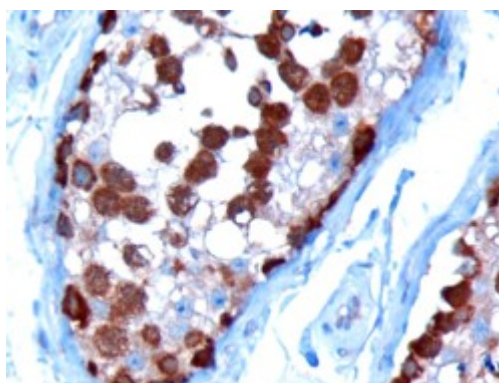
### Species Reactivity

**Tested:** Human

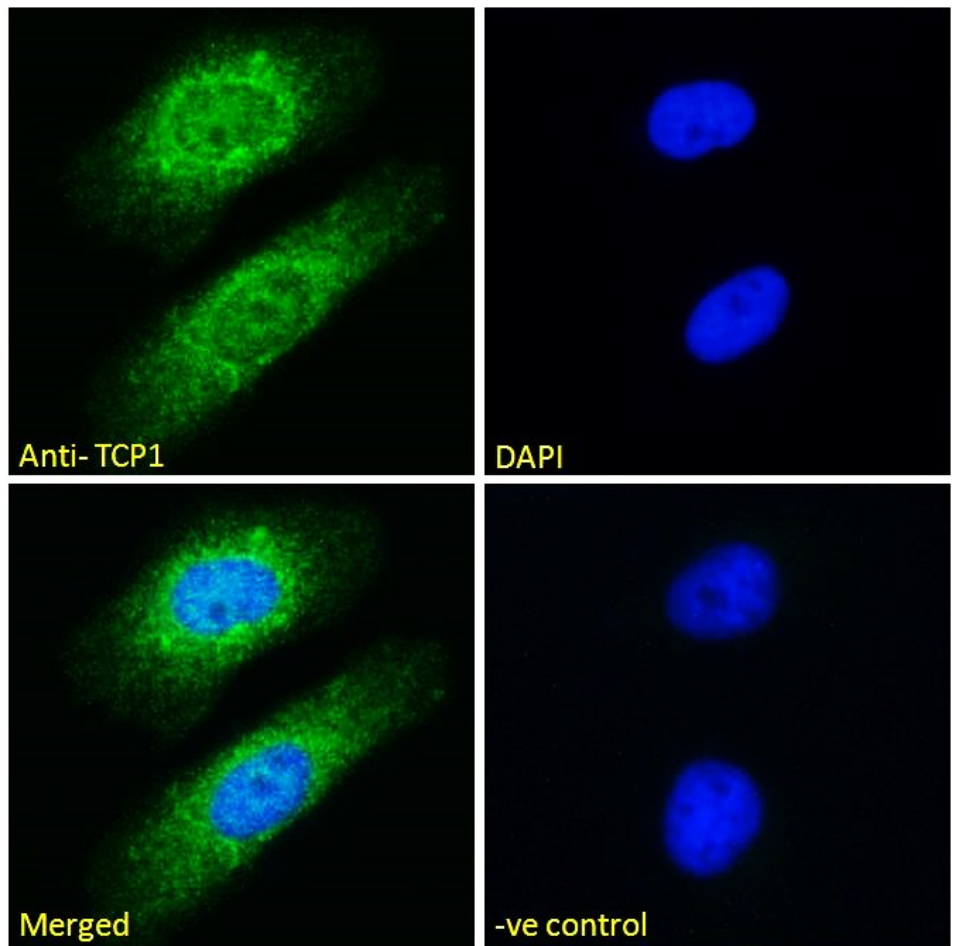
**Expected from sequence similarity:** Human



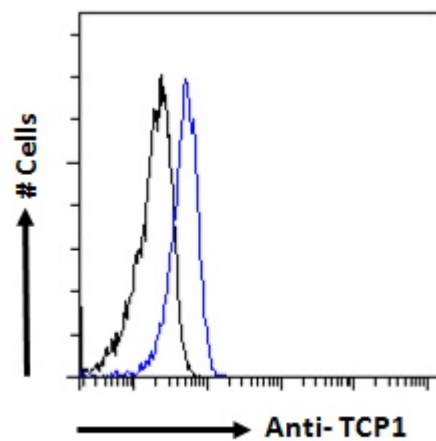
EB06277 (1 $\mu$ g/ml) staining of Human Ovary (A) lysate and HEK293 (B) cell lysate (35 $\mu$ g protein in RIPA buffer). Detected by chemiluminescence.



EB06277 (10 $\mu$ g/ml) staining of paraffin embedded Human Testis. Microwaved antigen retrieval with Tris/EDTA buffer pH9, HRP-staining.



EB06277 Immunofluorescence analysis of paraformaldehyde fixed HeLa cells, permeabilized with 0.15% Triton. Primary incubation 1hr (10ug/ml) followed by Alexa Fluor 488 secondary antibody (2ug/ml), showing cytoplasmic and nuclear staining. The nuclear stain is DAPI (blue). Negative control: Unimmunized goat IgG (10ug/ml) followed by Alexa Fluor 488 secondary antibody (2ug/ml).



EB06277 Flow cytometric analysis of paraformaldehyde fixed HeLa cells (blue line), permeabilized with 0.5% Triton. Primary incubation 1hr (10ug/ml) followed by Alexa Fluor 488 secondary antibody (1ug/ml). IgG control: Unimmunized goat IgG (black line) followed by Alexa Fluor 488 secondary antibody.