



## UK Office

### Everest Biotech Ltd

Cherwell Innovation Centre  
77 Heyford Park  
Upper Heyford  
Oxfordshire  
OX25 5HD  
UK

Enquiries:

[info@everestbiotech.com](mailto:info@everestbiotech.com)

Sales:

[sales@everestbiotech.com](mailto:sales@everestbiotech.com)

Tech support:

[support@everestbiotech.com](mailto:support@everestbiotech.com)

Tel: +44 (0)1869 238326

Fax: +44 (0)1869 238327

## US Office

### Everest Biotech c/o Abcore

405 Maple Street, Suite A106  
Ramona,  
CA 92065  
USA

Inquiries:

[info@everestbiotech.com](mailto:info@everestbiotech.com)

Sales:

[usasales@everestbiotech.com](mailto:usasales@everestbiotech.com)

Tech support:

[support@everestbiotech.com](mailto:support@everestbiotech.com)

Tel: 888-320-4628 (toll-free)

Fax: 888-841-9041

[www.everestbiotech.com](http://www.everestbiotech.com)

**Research Use Only. Not for  
diagnostic or therapeutic use.**

## EB06472 - Goat Anti-TEM8 / Anthrax Toxin Receptor 1 Antibody

Size: 100µg specific antibody in 200µl



### Target Protein

**Principal Names:** TEM8, anthrax toxin receptor, ATR, FLJ10601, FLJ21776, tumor endothelial marker 8, tumor endothelial marker 8, isoform 3 precursor, ANTXR1, anthrax toxin receptor 1, FLJ11298, 2310008J16Rik, 2810405N18Rik

**Official Symbol:** ANTXR1

**Accession Number(s):** NP\_115584.1

**Human GeneID(s):** [84168](#)

**Important Comments:** This antibody is expected to recognise variant 1 (NP\_115584) only.

### Immunogen

Peptide with sequence C-RAPPPSRPPRPSV, from the C Terminus of the protein sequence according to NP\_115584.1.

Please note the [peptide](#) is available for sale.

### Purification and Storage

Purified from goat serum by ammonium sulphate precipitation followed by antigen affinity chromatography using the immunizing peptide.

Supplied at 0.5 mg/ml in Tris saline, 0.02% sodium azide, pH7.3 with 0.5% bovine serum albumin.

Aliquot and store at -20°C. Minimize freezing and thawing.

### Applications Tested

**Peptide ELISA:** antibody detection limit dilution 1:64000.

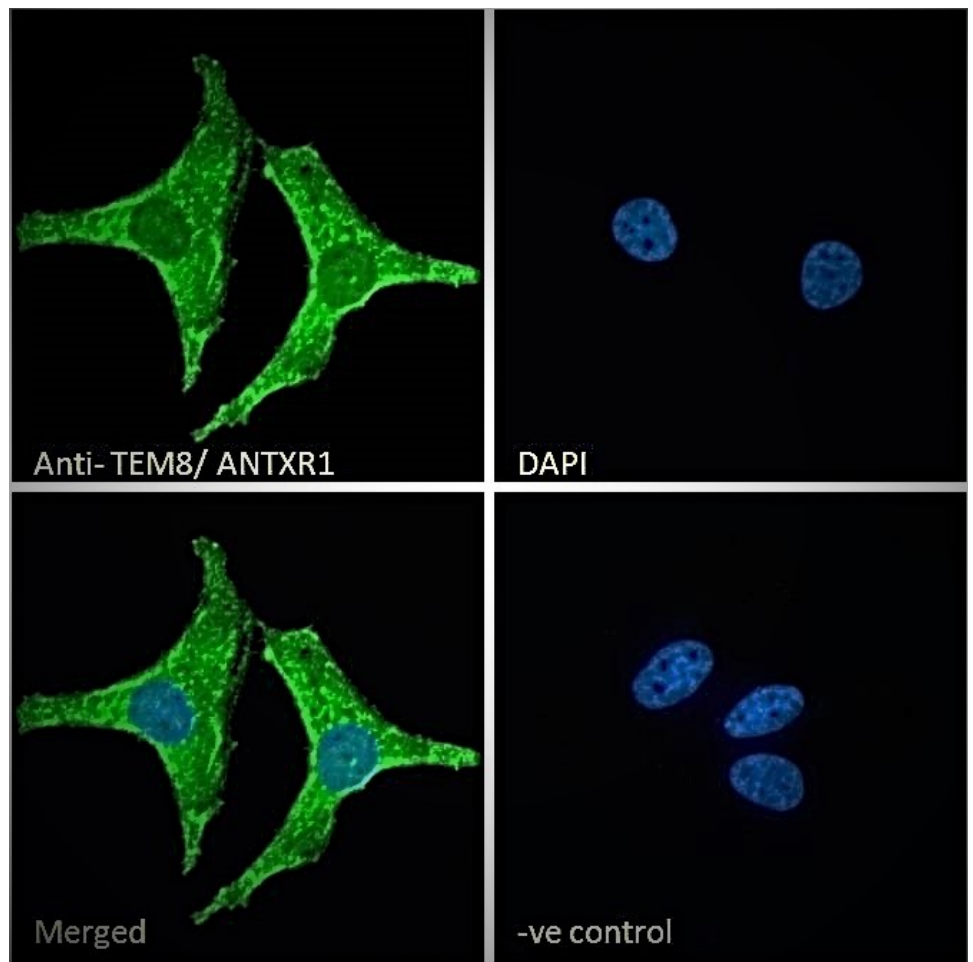
**Western blot:** Preliminary testing showed a band at approx 65-70kDa in lysate of cell lines A431 and U2OS after 1-2µg/ml antibody staining (calculated MW of 62.8kDa according to NP\_115584.1). This band was successfully blocked by incubation with the immunizing peptide. Primary incubation 1 hour at room temperature.

**Immunofluorescence:** Strong expression of the protein seen in the membrane and cytoplasm of HeLa cells. Recommended concentration: 10µg/ml.

### Species Reactivity

**Tested:** Human

**Expected from sequence similarity:** Human, Rat, Dog, Cow



EB06472 Immunofluorescence analysis of paraformaldehyde fixed HeLa cells, permeabilized with 0.15% Triton. Primary incubation 1hr (10ug/ml) followed by Alexa Fluor 488 secondary antibody (2ug/ml), showing plasma membrane and cytoplasmic staining. The nuclear stain is DAPI (blue). Negative control: Unimmunized goat IgG (10ug/ml) followed by Alexa Fluor 488 secondary antibody (2ug/ml).