



UK Office

Everest Biotech Ltd

Cherwell Innovation Centre
77 Heyford Park
Upper Heyford
Oxfordshire
OX25 5HD
UK

Enquiries:

info@everestbiotech.com

Sales:

sales@everestbiotech.com

Tech support:

support@everestbiotech.com

Tel: +44 (0)1869 238326

www.everestbiotech.com

**Research Use Only. Not for
diagnostic or therapeutic use.**

EB11098 - Goat Anti-Tensin 1 (aa902-914) Antibody

Size: 100µg specific antibody in 200µl



Target Protein

Principal Names: DKFZp586K0617, matrix-remodelling associated 6, Matrix-remodelling-associated protein 6, MGC88584, MST091, MST122, MST127, MSTP122, MSTP127, MXRA6, OTTHUMP00000207627, OTTHUMP00000207628, tensin 1, tensin-1, TNS, TNS1

Official Symbol: TNS1

Accession Number(s): NP_072174.3

Human GeneID(s): [7145](#)

Non-Human GeneID(s): 21961 (mouse), 301509 (rat)

Immunogen

Peptide with sequence C-QYENQSPEATSPR, from the internal region of the protein sequence according to NP_072174.3.

Please note the [peptide](#) is available for sale.

Purification and Storage

Purified from goat serum by ammonium sulphate precipitation followed by antigen affinity chromatography using the immunizing peptide.

Supplied at 0.5 mg/ml in Tris saline, 0.02% sodium azide, pH7.3 with 0.5% bovine serum albumin.

Aliquot and store at -20°C. Minimize freezing and thawing.

Applications Tested

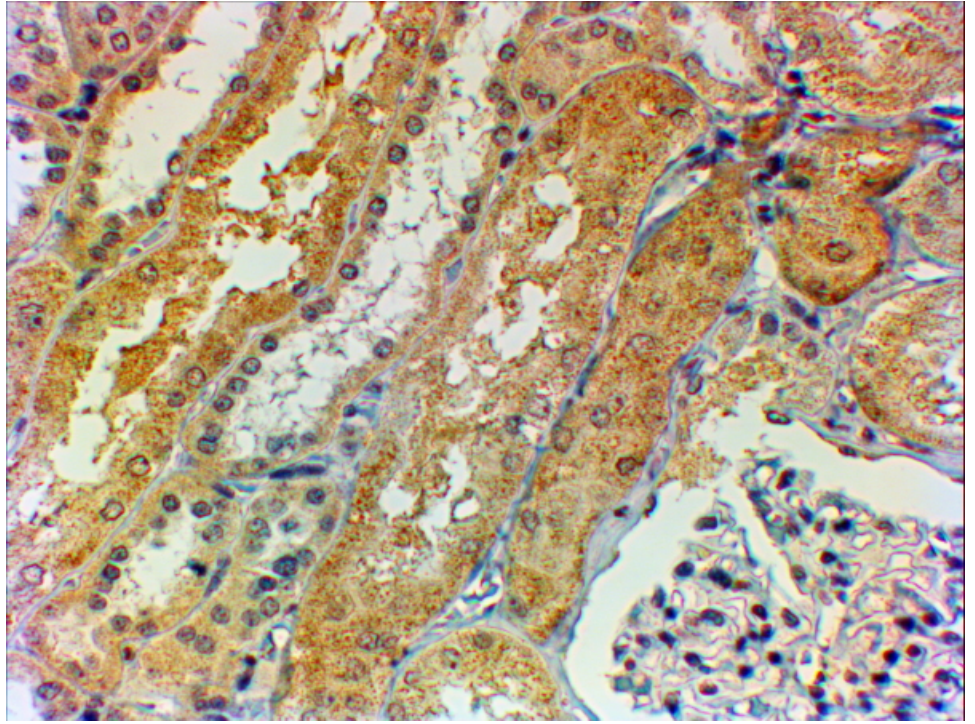
Peptide ELISA: antibody detection limit dilution 1:32000.

IHC: In paraffin embedded Human Kidney shows preferential staining in cytoplasm of PCT over DCT. Recommended concentration, 2-4µg/ml.

Species Reactivity

Tested: Human

Expected from sequence similarity: Human, Mouse, Rat, Cow



EB11098 (2 μ g/ml) staining of paraffin embedded Human Kidney. Steamed antigen retrieval with citrate buffer pH 6, HRP-staining.