

## International Office

### Everest Biotech Ltd

Vector Laboratories, Inc.  
6737 Mowry Ave  
Newark, CA 94560  
United States

Customer Service:

[customerservice@vectorlabs.com](mailto:customerservice@vectorlabs.com)

Technical Service:

[technical@vectorlabs.com](mailto:technical@vectorlabs.com)

Tel: +1 (800) 227-6666

[www.everestbiotech.com](http://www.everestbiotech.com)

**Research Use Only. Not for  
diagnostic or therapeutic use.**

## EB05325 - Goat Anti-TERF1 / PIN2 Antibody

Size: 100µg specific antibody in 200µl



### Target Protein

**Principal Names:** TERF1, PIN2, TRF, TRF1, TRBF1, hTRF1-AS, telomeric repeat binding factor (NIMA-interacting) 1, Telomeric repeat binding factor 1, telomeric repeat binding protein 1, FLJ41416, t-TRF1

**Official Symbol:** TERF1

**Accession Number(s):** NP\_003209.2; NP\_059523.2

**Human GeneID(s):** [7013](#)

**Important Comments:** This antibody is expected to recognise isoform 1 (NP\_059523.2) and isoform 2 (NP\_003209.2).

### Immunogen

Peptide with sequence C-TMKKLLISSDSED, from the C Terminus of the protein sequence according to NP\_003209.2; NP\_059523.2.

Please note the [peptide](#) is available for sale.

### Purification and Storage

Purified from goat serum by ammonium sulphate precipitation followed by antigen affinity chromatography using the immunizing peptide.

Supplied at 0.5 mg/ml in Tris saline, 0.02% sodium azide, pH7.3 with 0.5% bovine serum albumin.

Aliquot and store at -20°C. Minimize freezing and thawing.

### Applications Tested

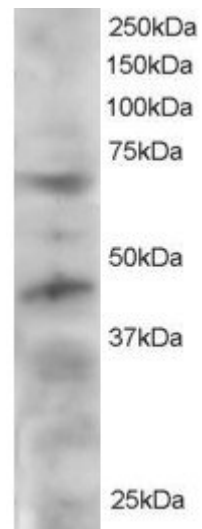
**Peptide ELISA:** antibody detection limit dilution 1:8000.

**Western blot:** Approx 60-65kDa and 45kDa bands seen in HeLa lysate. Recommended for use at 1-3µg/ml.

### Species Reactivity

**Tested:** Human

**Expected from sequence similarity:** Human, Pig, Cow



EB05325 staining (2 $\mu$ g/ml) of HeLa lysate (RIPA buffer, 30 $\mu$ g total protein per lane). Primary incubated for 12 hour. Detected by western blot using chemiluminescence.