

UK Office

Everest Biotech Ltd

Cherwell Innovation Centre
77 Heyford Park
Upper Heyford
Oxfordshire
OX25 5HD
UK

Enquiries:

info@everestbiotech.com

Sales:

sales@everestbiotech.com

Tech support:

support@everestbiotech.com

Tel: +44 (0)1869 238326

www.everestbiotech.com

**Research Use Only. Not for
diagnostic or therapeutic use.**

EB11087 - Goat Anti-Terminal Uridyltransferase 4 (mouse) Antibody

Size: 100µg specific antibody in 200µl



Target Protein

Principal Names: 6030404K05Rik, 9230115F04Rik, KIAA0191, mKIAA0191, OTTMUSP00000008601, PPAPD3, RP23-406B13.1, terminal uridylyltransferase 4, TUTase 4, zinc finger CCHC domain-containing protein 11, zinc finger, CCHC domain containing 11, Zcchc11

Official Symbol: Tut4

Accession Number(s): NP_780681.2

Non-Human GeneID(s): 230594 (mouse), 313481 (rat)

Immunogen

Peptide with sequence C-QKSAEKQGDLTPSET, from the internal region of the protein sequence according to NP_780681.2.

Please note the [peptide](#) is available for sale.

Purification and Storage

Purified from goat serum by ammonium sulphate precipitation followed by antigen affinity chromatography using the immunizing peptide.

Supplied at 0.5 mg/ml in Tris saline, 0.02% sodium azide, pH7.3 with 0.5% bovine serum albumin.

Aliquot and store at -20°C. Minimize freezing and thawing.

Applications Tested

Peptide ELISA: antibody detection limit dilution 1:32000.

Western blot: Approx 170kDa band observed in Rat Brain lysates (calculated MW of 163kDa according to Rat NP_001101423.1 and 185kDa according to Mouse NP_780681.2). Recommended concentration: 0.03-0.1µg/ml. Approx 200kDa band observed in Mouse Testis lysates and not in Knock-out background (calculated MW of 185kDa according to Human NP_001009881.1 and to Mouse NP_780681.2).

Recommended concentration: 0.1-0.3µg/ml.

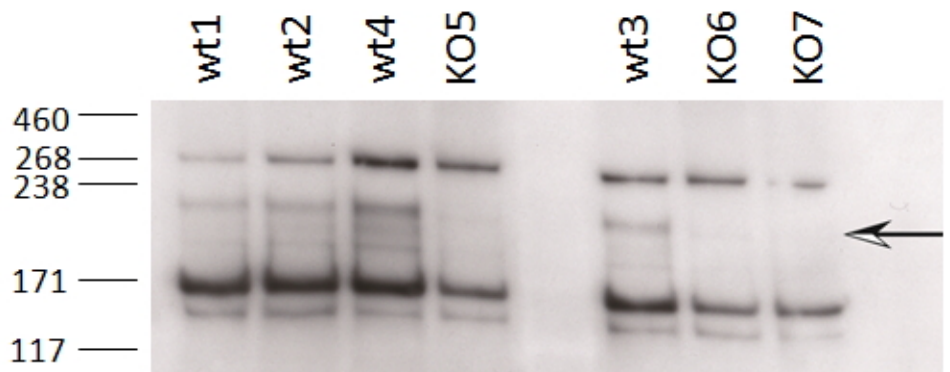
Species Reactivity

Tested: Mouse, Rat

Expected from sequence similarity: Mouse, Rat



EB11087 (0.05 μ g/ml) staining of Rat Brain lysate (35 μ g protein in RIPA buffer). Primary incubation was 1 hour. Detected by chemiluminescence.



EB11087 (0.2 μ g/ml) staining of different Testis lysates from wildtype 8-9 week old C57BL/6 (wt) and knock-out (KO) mice (35 μ g protein in RIPA buffer). Primary incubation was 2 hours. Detected by chemiluminescence. Data obtained from an anonymous customer.