



UK Office

Everest Biotech Ltd

Cherwell Innovation Centre
77 Heyford Park
Upper Heyford
Oxfordshire
OX25 5HD
UK

Enquiries:

info@everestbiotech.com

Sales:

sales@everestbiotech.com

Tech support:

support@everestbiotech.com

Tel: +44 (0)1869 238326

Fax: +44 (0)1869 238327

US Office

Everest Biotech c/o Abcore

405 Maple Street, Suite A106
Ramona,
CA 92065
USA

Inquiries:

info@everestbiotech.com

Sales:

usasales@everestbiotech.com

Tech support:

support@everestbiotech.com

Tel: 888-320-4628 (toll-free)

Fax: 888-841-9041

www.everestbiotech.com

**Research Use Only. Not for
diagnostic or therapeutic use.**

EB09642 - Goat Anti-TET2 Antibody

Size: 100µg specific antibody in 200µl



Target Protein

Principal Names: TET2, tet oncogene family member 2, FLJ20032, KIAA1546, MGC125715, OTTHUMP00000161869

Official Symbol: TET2

Accession Number(s): NP_001120680.1; NP_060098.3

Human GeneID(s): [54790](#)

Non-Human GeneID(s): 214133 (mouse)

Important Comments: This antibody is expected to recognize both reported isoforms (NP_001120680.1; NP_060098.3).

Immunogen

Peptide with sequence C-PHPQSNNDQQREGSF, from the internal region of the protein sequence according to NP_001120680.1; NP_060098.3.

Please note the [peptide](#) is available for sale.

Purification and Storage

Purified from goat serum by ammonium sulphate precipitation followed by antigen affinity chromatography using the immunizing peptide.

Supplied at 0.5 mg/ml in Tris saline, 0.02% sodium azide, pH7.3 with 0.5% bovine serum albumin.

Aliquot and store at -20°C. Minimize freezing and thawing.

Applications Tested

Peptide ELISA: antibody detection limit dilution 1:16000.

IHC: In paraffin embedded Human Spleen shows nuclear staining in select splenocytes. Recommended concentration: 2-6µg/ml.

Flow Cytometry: Flow cytometric analysis of A431 cells. Recommended concentration: 10ug/ml.

Species Reactivity

Tested: Human

Expected from sequence similarity: Human, Mouse, Dog

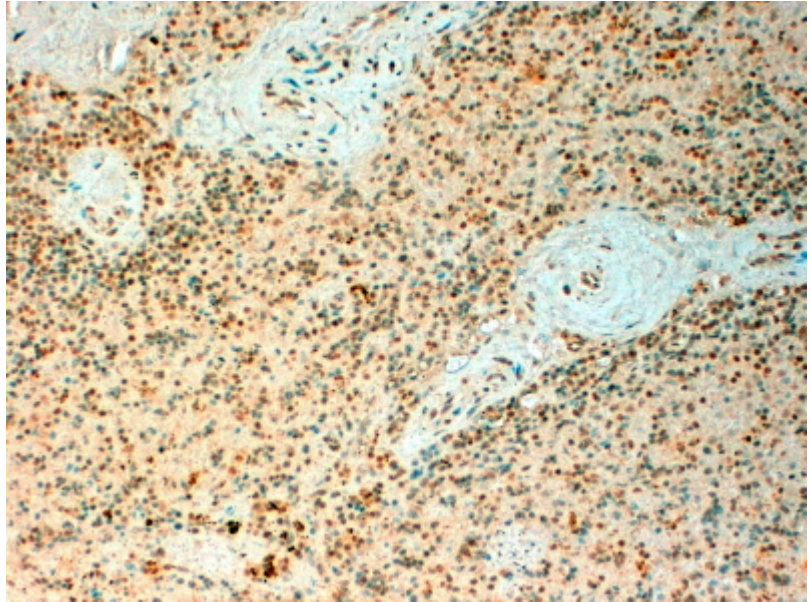
Specific References

This antibody (previous batch) has been successfully used in IHC on Mouse:

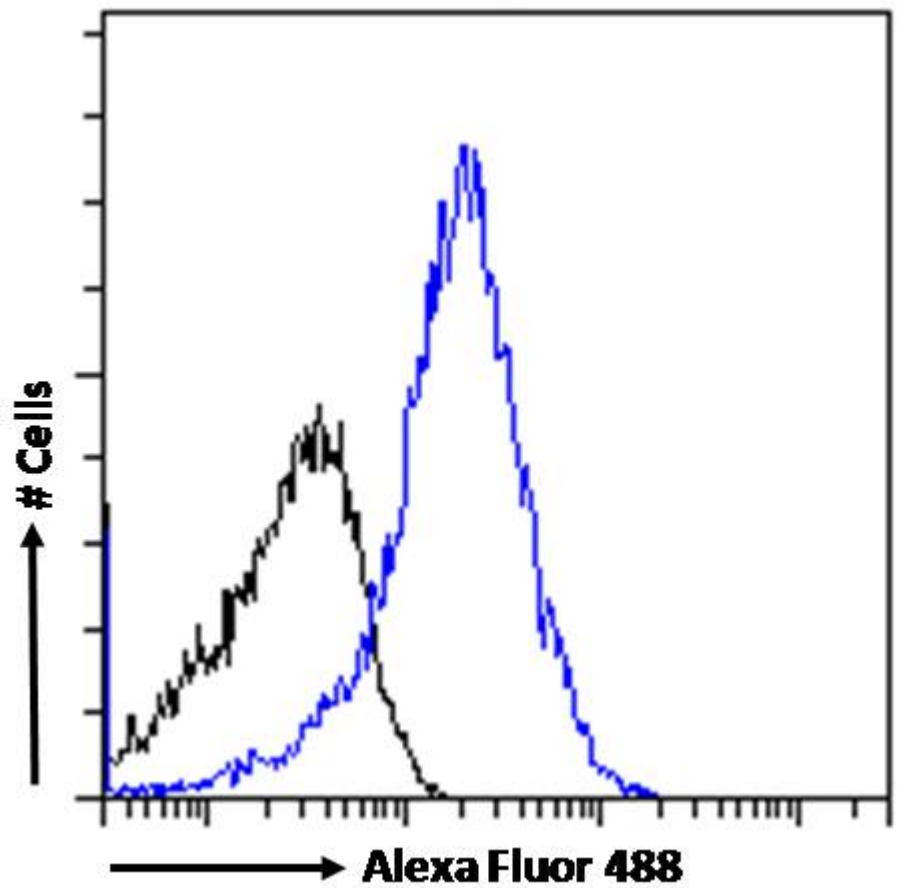
Rakoczy J, Padmanabhan N, Krzak AM, Kieckbusch J, Cindrova-Davies T, Watson ED
Dynamic expression of TET1, TET2,
and TET3 dioxygenases in mouse and human placenta throughout gestation.
Placenta. 2017 Nov;59:46-56.
PMID: 29108636

This antibody (previous batch) has been successfully used in IHC on Human:

Orr BA, Haffner MC, Nelson WG, Yegnasubramanian S, Eberhart CG.
Decreased 5-hydroxymethylcytosine is associated with neural progenitor phenotype in
normal brain and shorter survival in malignant glioma.
PLoS One. 2012;7(7):e41036. 2012 Jul 19
PMID: 22829908



EB09642 (4µg/ml) staining of paraffin embedded Human Spleen. Steamed antigen retrieval with citrate buffer pH 6, HRP-staining.



EB09642 Flow cytometric analysis of paraformaldehyde fixed A431 cells (blue line), permeabilized with 0.5% Triton. Primary incubation 1hr (10ug/ml) followed by Alexa Fluor 488 secondary antibody (1ug/ml). IgG control: Unimmunized goat IgG (black line) followed by Alexa Fluor 488 secondary antibody.