



## UK Office

### Everest Biotech Ltd

Cherwell Innovation Centre  
77 Heyford Park  
Upper Heyford  
Oxfordshire  
OX25 5HD  
UK

Enquiries:

[info@everestbiotech.com](mailto:info@everestbiotech.com)

Sales:

[sales@everestbiotech.com](mailto:sales@everestbiotech.com)

Tech support:

[support@everestbiotech.com](mailto:support@everestbiotech.com)

Tel: +44 (0)1869 238326

Fax: +44 (0)1869 238327

## US Office

### Everest Biotech c/o Abcore

405 Maple Street, Suite A106  
Ramona,  
CA 92065  
USA

Inquiries:

[info@everestbiotech.com](mailto:info@everestbiotech.com)

Sales:

[usasales@everestbiotech.com](mailto:usasales@everestbiotech.com)

Tech support:

[support@everestbiotech.com](mailto:support@everestbiotech.com)

Tel: 888-320-4628 (toll-free)

Fax: 888-841-9041

[www.everestbiotech.com](http://www.everestbiotech.com)

**Research Use Only. Not for  
diagnostic or therapeutic use.**

## EB10931 - Goat Anti-TFB2M Antibody

Size: 100µg specific antibody in 200µl



## Target Protein

**Principal Names:** TFB2M, transcription factor B2, mitochondrial, FLJ22661, FLJ23182, Hkp1, mtTFB2, HCV NS5A-transactivated protein 5, S-adenosylmethionine-6-N', N'-adenosyl(rRNA) dimethyltransferase 2, dimethyladenosine transferase 2, mitochondrial, h-mtTFB2, hTFB

**Official Symbol:** TFB2M

**Accession Number(s):** NP\_071761.1

**Human GeneID(s):** [64216](#)

## Immunogen

Peptide with sequence KHCFGRRSATVIDH, from the internal region of the protein sequence according to NP\_071761.1.

Please note the [peptide](#) is available for sale.

## Purification and Storage

Purified from goat serum by ammonium sulphate precipitation followed by antigen affinity chromatography using the immunizing peptide.

Supplied at 0.5 mg/ml in Tris saline, 0.02% sodium azide, pH7.3 with 0.5% bovine serum albumin.

Aliquot and store at -20°C. Minimize freezing and thawing.

## Applications Tested

**Peptide ELISA:** antibody detection limit dilution 1:64000.

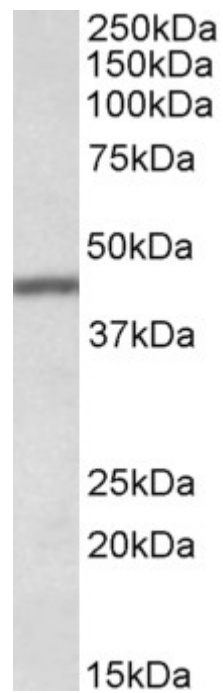
**Western blot:** Approx 45kDa band observed in Human Lung lysates (calculated MW of 45.3kDa according to NP\_071761.1). Recommended concentration: 0.1-0.3µg/ml. Primary incubation was 1 hour.

**IHC:** Paraffin embedded Human Colon. Recommended concentration: 5µg/ml.

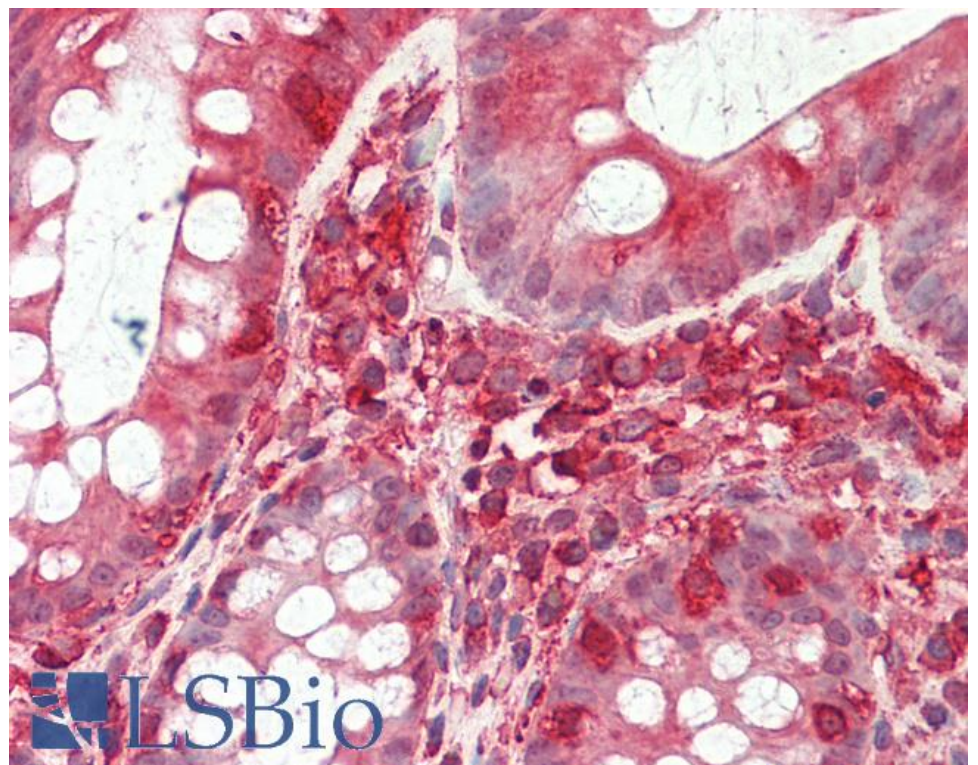
## Species Reactivity

**Tested:** Human

**Expected from sequence similarity:** Human



EB10931 (0.1 $\mu$ g/ml) staining of Human Lung lysate (35 $\mu$ g protein in RIPA buffer). Detected by chemiluminescence.



EB10931 (5 $\mu$ g/ml) staining of paraffin embedded Human Colon. Steamed antigen retrieval with citrate buffer pH 6, AP-staining.