

## UK Office

### Everest Biotech Ltd

Cherwell Innovation Centre  
77 Heyford Park  
Upper Heyford  
Oxfordshire  
OX25 5HD  
UK

Enquiries:

[info@everestbiotech.com](mailto:info@everestbiotech.com)

Sales:

[sales@everestbiotech.com](mailto:sales@everestbiotech.com)

Tech support:

[support@everestbiotech.com](mailto:support@everestbiotech.com)

Tel: +44 (0)1869 238326

[www.everestbiotech.com](http://www.everestbiotech.com)

**Research Use Only. Not for  
diagnostic or therapeutic use.**

## EB10932 - Goat Anti-Tfb2m (mouse) Antibody

Size: 100µg specific antibody in 200µl



### Target Protein

**Principal Names:** Tfb2m, transcription factor B2, mitochondrial, Hkp1, OTTMUSP00000025719, S-adenosylmethionine-6-N', N'-adenosyl(rRNA) dimethyltransferase 2, dimethyladenosine transferase 2, mitochondrial, house-keeping protein 1, mTFB2M, mitochondrial 12S rRNA dimethylase 2, mitochondrial transcription factor B2, mtTFB2

**Official Symbol:** Tfb2m

**Accession Number(s):** NP\_032275.2

**Non-Human GeneID(s):** 15278 (mouse), 289307 (rat)

### Immunogen

Peptide with sequence C-RNLVRDLLEHQNPS, from the internal region of the protein sequence according to NP\_032275.2.

Please note the [peptide](#) is available for sale.

### Purification and Storage

Purified from goat serum by ammonium sulphate precipitation followed by antigen affinity chromatography using the immunizing peptide.

Supplied at 0.5 mg/ml in Tris saline, 0.02% sodium azide, pH7.3 with 0.5% bovine serum albumin.

Aliquot and store at -20°C. Minimize freezing and thawing.

### Applications Tested

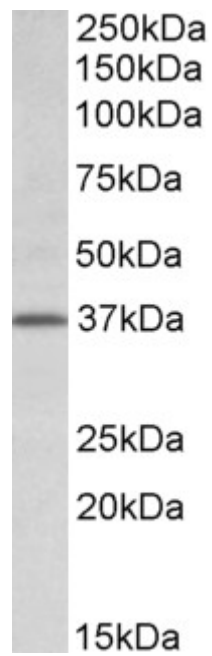
**Peptide ELISA:** antibody detection limit dilution 1:4000.

**Western blot:** Approx 37kDa band observed in Mouse and Rat Lung lysates (calculated MW of 45.9kDa according to NP\_032275.2). This molecular weight is routinely observed by other sources. Recommended concentration: 0.5-2µg/ml.

### Species Reactivity

**Tested:** Mouse, Rat

**Expected from sequence similarity:** Mouse, Rat



EB10932 (0.5 $\mu$ g/ml) staining of Rat Lung lysate (35 $\mu$ g protein in RIPA buffer). Primary incubation was 1 hour.  
Detected by chemiluminescence.