



UK Office

Everest Biotech Ltd

Cherwell Innovation Centre
77 Heyford Park
Upper Heyford
Oxfordshire
OX25 5HD
UK

Enquiries:

info@everestbiotech.com

Sales:

sales@everestbiotech.com

Tech support:

support@everestbiotech.com

Tel: +44 (0)1869 238326

www.everestbiotech.com

**Research Use Only. Not for
diagnostic or therapeutic use.**

EB05424 - Goat Anti-TFE3 Antibody

Size: 100µg specific antibody in 200µl



Target Protein

Principal Names: TFE3, transcription factor binding to IGHM enhancer 3, Transcription factor for IgH enhancer, RCCP2, TFEA, bHLHe33, OTTHUMP00000024272, Renal cell carcinoma, papillary, Transcription factor for IgH enhancer, transcription factor E family, member A, transcription factor E3

Official Symbol: TFE3

Accession Number(s): NP_006512.2

Human GeneID(s): [7030](#)

Immunogen

Peptide with sequence SHAAEPARDGVEAS-C, from the N Terminus of the protein sequence according to NP_006512.2.

Please note the [peptide](#) is available for sale.

Purification and Storage

Purified from goat serum by ammonium sulphate precipitation followed by antigen affinity chromatography using the immunizing peptide.

Supplied at 0.5 mg/ml in Tris saline, 0.02% sodium azide, pH7.3 with 0.5% bovine serum albumin.

Aliquot and store at -20°C. Minimize freezing and thawing.

Applications Tested

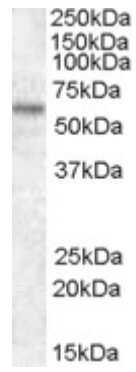
Peptide ELISA: antibody detection limit dilution 1:32000.

Western blot: Approx 60kDa band observed in lysates of HEK293 (calculated MW of 61.5kDa according to NP_006512.2). Recommended concentration: 1-3µg/ml.

Species Reactivity

Tested: Human

Expected from sequence similarity: Human, Mouse, Dog, Cow



EB05424 (1 μ g/ml) staining of HEK293 lysate (35 μ g protein in RIPA buffer). Primary incubation was 1 hour.
Detected by chemiluminescence.