



UK Office

Everest Biotech Ltd

Cherwell Innovation Centre
77 Heyford Park
Upper Heyford
Oxfordshire
OX25 5HD
UK

Enquiries:

info@everestbiotech.com

Sales:

sales@everestbiotech.com

Tech support:

support@everestbiotech.com

Tel: +44 (0)1869 238326

www.everestbiotech.com

**Research Use Only. Not for
diagnostic or therapeutic use.**

EB05426 - Goat Anti-TFEC Antibody

Size: 100µg specific antibody in 200µl



Target Protein

Principal Names: TFEC, transcription factor EC, TC FEC, TFECL, bHLHe34

Official Symbol: TFEC

Accession Number(s): NP_036384.1; NP_001018068.1

Human GeneID(s): [22797](#)

Important Comments: This antibody is expected to recognise both reported Human isoforms according to NP_036384.1 and NP_001018068.1.

Immunogen

Peptide with sequence TLDHQIINPTLK-C, from the N Terminus of the protein sequence according to NP_036384.1; NP_001018068.1.

Please note the [peptide](#) is available for sale.

Purification and Storage

Purified from goat serum by ammonium sulphate precipitation followed by antigen affinity chromatography using the immunizing peptide.

Supplied at 0.5 mg/ml in Tris saline, 0.02% sodium azide, pH7.3 with 0.5% bovine serum albumin.

Aliquot and store at -20°C. Minimize freezing and thawing.

Applications Tested

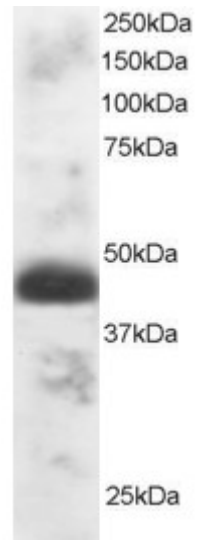
Peptide ELISA: antibody detection limit dilution 1:32000.

Western blot: Approx 40-45kDa band seen in Human Testis lysate. Recommended for use at 0.5-2µg/ml.

Species Reactivity

Tested: Human

Expected from sequence similarity: Human



EB05426 staining (1 μ g/ml) of Human Testis lysate (RIPA buffer, 30 μ g total protein per lane). Primary incubated for 1 hour. Detected by western blot using chemiluminescence.