



## UK Office

### Everest Biotech Ltd

Cherwell Innovation Centre  
77 Heyford Park  
Upper Heyford  
Oxfordshire  
OX25 5HD  
UK

Enquiries:

[info@everestbiotech.com](mailto:info@everestbiotech.com)

Sales:

[sales@everestbiotech.com](mailto:sales@everestbiotech.com)

Tech support:

[support@everestbiotech.com](mailto:support@everestbiotech.com)

Tel: +44 (0)1869 238326

Fax: +44 (0)1869 238327

## US Office

### Everest Biotech c/o Abcore

405 Maple Street, Suite A106  
Ramona,  
CA 92065  
USA

Inquiries:

[info@everestbiotech.com](mailto:info@everestbiotech.com)

Sales:

[usasales@everestbiotech.com](mailto:usasales@everestbiotech.com)

Tech support:

[support@everestbiotech.com](mailto:support@everestbiotech.com)

Tel: 888-320-4628 (toll-free)

Fax: 888-841-9041

[www.everestbiotech.com](http://www.everestbiotech.com)

**Research Use Only. Not for  
diagnostic or therapeutic use.**

## EB05426 - Goat Anti-TFEC Antibody

Size: 100µg specific antibody in 200µl



## Target Protein

**Principal Names:** TFEC, transcription factor EC, TC FEC, TFECL, bHLHe34

**Official Symbol:** TFEC

**Accession Number(s):** NP\_036384.1; NP\_001018068.1

**Human GeneID(s):** [22797](#)

**Important Comments:** This antibody is expected to recognise both reported Human isoforms according to NP\_036384.1 and NP\_001018068.1.

## Immunogen

Peptide with sequence TLDHQIINPTLK-C, from the N Terminus of the protein sequence according to NP\_036384.1; NP\_001018068.1.

Please note the [peptide](#) is available for sale.

## Purification and Storage

Purified from goat serum by ammonium sulphate precipitation followed by antigen affinity chromatography using the immunizing peptide.

Supplied at 0.5 mg/ml in Tris saline, 0.02% sodium azide, pH7.3 with 0.5% bovine serum albumin.

Aliquot and store at -20°C. Minimize freezing and thawing.

## Applications Tested

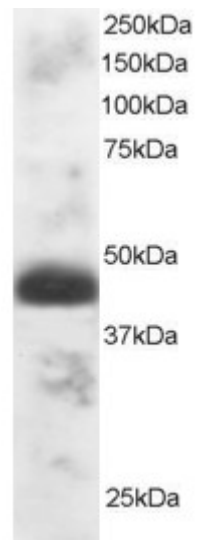
**Peptide ELISA:** antibody detection limit dilution 1:32000.

**Western blot:** Approx 40-45kDa band seen in Human Testis lysate. Recommended for use at 0.5-2µg/ml.

## Species Reactivity

**Tested:** Human

**Expected from sequence similarity:** Human



EB05426 staining (1 $\mu$ g/ml) of Human Testis lysate (RIPA buffer, 30 $\mu$ g total protein per lane). Primary incubated for 1 hour. Detected by western blot using chemiluminescence.