



## UK Office

### Everest Biotech Ltd

Cherwell Innovation Centre  
77 Heyford Park  
Upper Heyford  
Oxfordshire  
OX25 5HD  
UK

Enquiries:

[info@everestbiotech.com](mailto:info@everestbiotech.com)

Sales:

[sales@everestbiotech.com](mailto:sales@everestbiotech.com)

Tech support:

[support@everestbiotech.com](mailto:support@everestbiotech.com)

Tel: +44 (0)1869 238326

[www.everestbiotech.com](http://www.everestbiotech.com)

**Research Use Only. Not for  
diagnostic or therapeutic use.**

## EB07852 - Goat Anti-TGM2 Antibody

Size: 100µg specific antibody in 200µl



### Target Protein

**Principal Names:** TGM2, transglutaminase 2 (C polypeptide, protein-glutamine-gamma-glutamyltransferase), TG2, TGC, C polypeptide, TGase C, TGase-H, protein-glutamine-gamma-glutamyltransferase, tissue transglutaminase, transglutaminase 2, transglutaminase C

**Official Symbol:** TGM2

**Accession Number(s):** NP\_004604.2; NP\_001310245.1; NP\_001310247.1;  
NP\_001310246.1

**Human GeneID(s):** [7052](#)

**Important Comments:** This antibody is expected to recognise all reported isoforms.

### Immunogen

Peptide with sequence C-ESDKLKAVKGFNR, from the C Terminus of the protein sequence according to NP\_004604.2; NP\_001310245.1; NP\_001310247.1; NP\_001310246.1.

Please note the [peptide](#) is available for sale.

### Purification and Storage

Purified from goat serum by ammonium sulphate precipitation followed by antigen affinity chromatography using the immunizing peptide.

Supplied at 0.5 mg/ml in Tris saline, 0.02% sodium azide, pH7.3 with 0.5% bovine serum albumin.

Aliquot and store at -20°C. Minimize freezing and thawing.

### Applications Tested

**Peptide ELISA:** antibody detection limit dilution 1:128000.

**Western blot:** Approx. 85kDa band observed in Human Placenta lysates, and approx. 80kDa in lysates of cell line A549 and in preliminary testing of Human pancreatic cancer lysate (calculated MW. of 77.3kDa according to NP\_004604.2). These molecular weights are observed by other commercial sources. Recommended concentration: 0.01-0.1µg/ml. Primary incubation 1 hour at room temperature.

**Flow Cytometry:** Flow cytometric analysis of A549 cells. Recommended concentration: 10ug/ml.

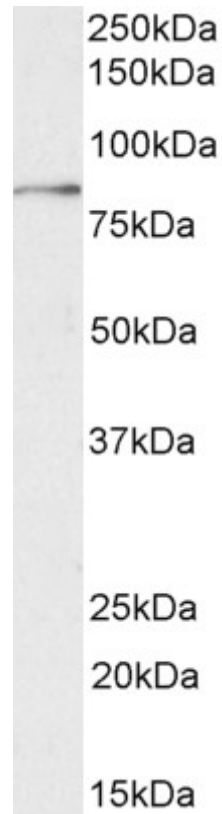
### Species Reactivity

**Tested:** Human

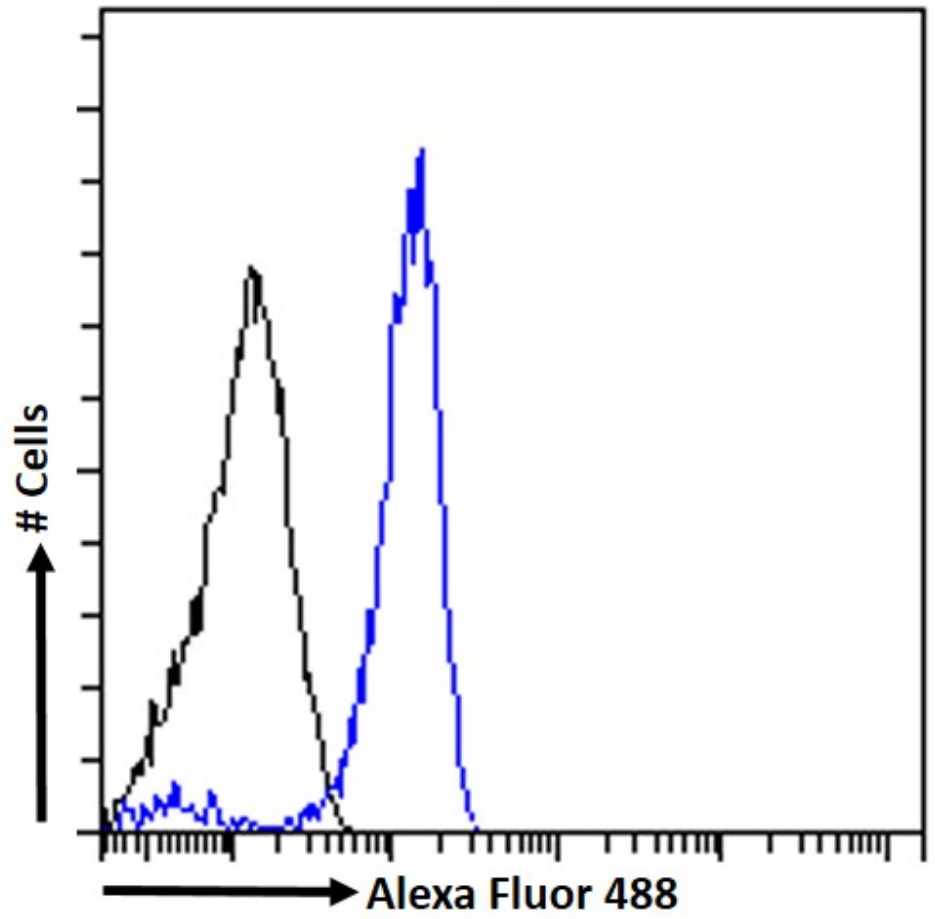
**Expected from sequence similarity:** Human, Dog, Cow



EB07852 (0.1 $\mu$ g/ml) staining of A549 cell lysate (35 $\mu$ g protein in RIPA buffer). Detected by chemiluminescence.



EB07852 (0.03 $\mu$ g/ml) staining of Human Placenta lysate (35 $\mu$ g protein in RIPA buffer). Detected by chemiluminescence.



EB07852 Flow cytometric analysis of paraformaldehyde fixed A549 cells (blue line) permeabilized with 0.5% Triton. Primary incubation 1hr (10ug/ml) followed by Alexa Fluor 488® conjugated secondary antibody (1ug/ml). IgG control: Unimmunized goat IgG (black line) followed by Alexa Fluor 488 secondary antibody.