

UK Office

Everest Biotech Ltd

Cherwell Innovation Centre
77 Heyford Park
Upper Heyford
Oxfordshire
OX25 5HD
UK

Enquiries:

info@everestbiotech.com

Sales:

sales@everestbiotech.com

Tech support:

support@everestbiotech.com

Tel: +44 (0)1869 238326

www.everestbiotech.com

**Research Use Only. Not for
diagnostic or therapeutic use.**

EB07827-T - Goat Anti-TGM2 Antibody - Trial

Size: 20µg specific antibody in 40µl



Target Protein

Principal Names: TGM2, transglutaminase 2 (C polypeptide, protein-glutamine-gamma-glutamyltransferase), TG2, TGC, C polypeptide, TGase C, TGase-H, protein-glutamine-gamma-glutamyltransferase, tissue transglutaminase, transglutaminase 2, transglutaminase C

Official Symbol: TGM2

Accession Number(s): NP_004604.2; NP_001310245.1; NP_001310247.1;
NP_001310246.1

Human GeneID(s): [7052](#)

Important Comments: This antibody is expected to recognise all reported isoforms.

Immunogen

Peptide with sequence C-NFESDKLKAVKGFR, from the internal region (near the C Terminus) of the protein sequence according to NP_004604.2; NP_001310245.1; NP_001310247.1; NP_001310246.1.

Please note the [peptide](#) is available for sale.

Purification and Storage

Purified from goat serum by ammonium sulphate precipitation followed by antigen affinity chromatography using the immunizing peptide.

Supplied at 0.5 mg/ml in Tris saline, 0.02% sodium azide, pH7.3 with 0.5% bovine serum albumin.

Aliquot and store at -20°C. Minimize freezing and thawing.

Applications Tested

Peptide ELISA: antibody detection limit dilution 1:128000.

Western blot: Approx. 70kDa band observed in K562, 70+80kDa in Caco-2 and 70+85kDa in A549 cell lysates, and approx. 80kDa in Human Placenta lysates (calculated MW of 70.3kDa according to NP_001310247.1 and 77.3kDa according to NP_004604.2). All observed molecular weights are reported by other sources. Recommended concentration: 0.1-0.3µg/ml. Primary incubation 1 hour at room temperature.

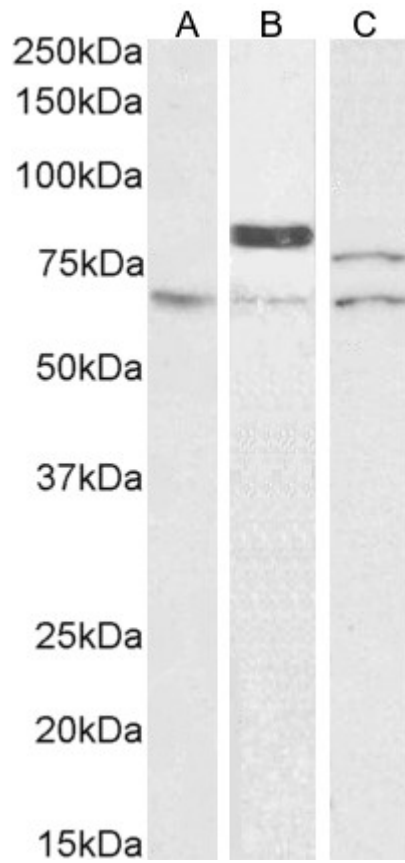
IHC: Paraffin embedded Human Placenta. Recommended concentration: 5-10µg/ml.

Flow Cytometry: Flow cytometric analysis of A549 cells. Recommended concentration: 10µg/ml.

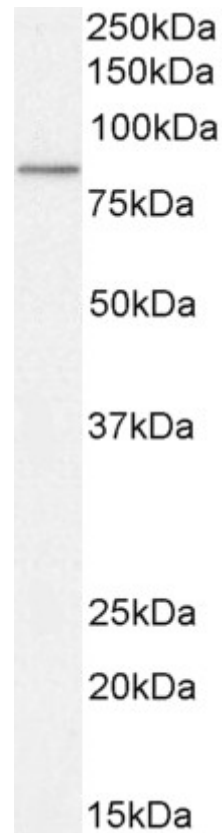
Species Reactivity

Tested: Human

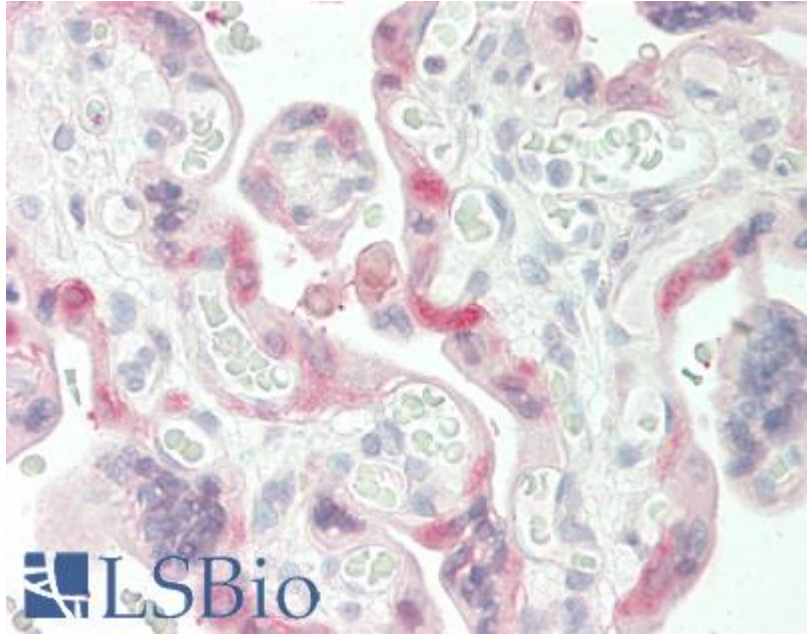
Expected from sequence similarity: Human



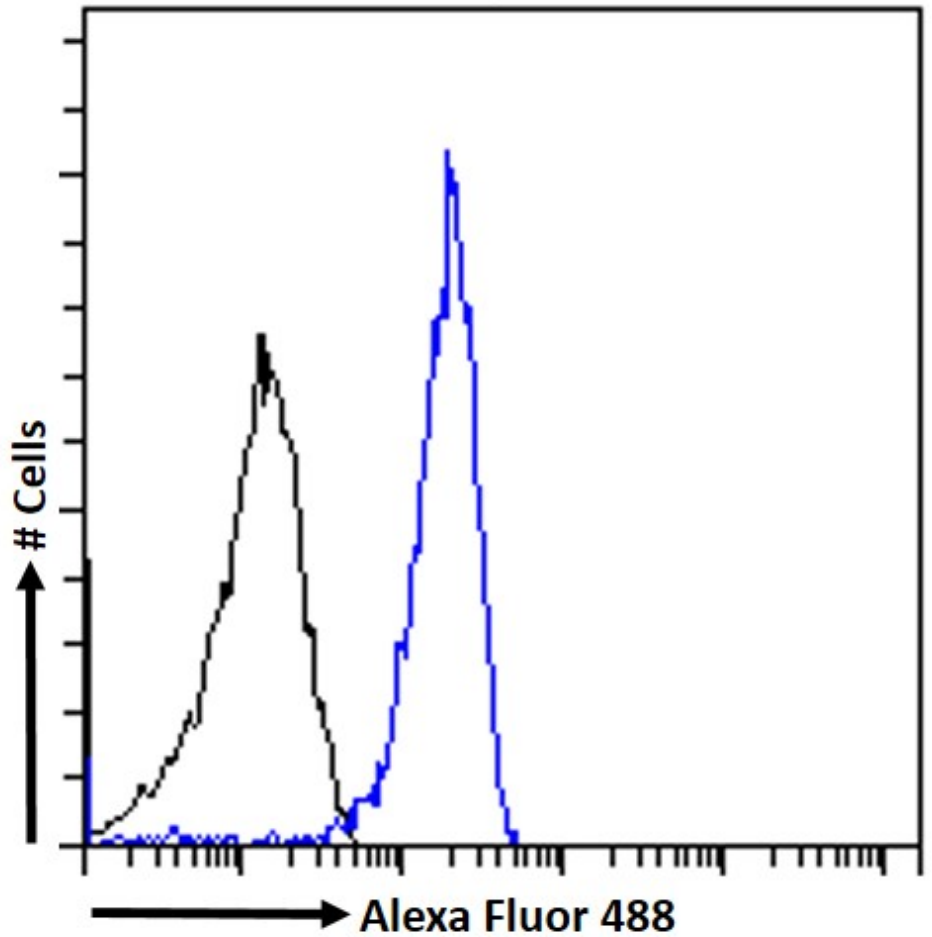
EB07827 (0.1 μ g/ml) staining of K562 (A) and A549 (B) and (0.3 μ g/ml) Caco-2 (C) cell lysate (35 μ g protein in RIPA buffer). Detected by chemiluminescence.



EB07827 (0.1 μ g/ml) staining of Human Placenta lysate (35 μ g protein in RIPA buffer). Detected by chemiluminescence.



EB07827 (5µg/ml) staining of paraffin embedded Human Placenta. Steamed antigen retrieval with citrate buffer pH 6, AP-staining.



EB07827 Flow cytometric analysis of paraformaldehyde fixed A549 cells (blue line) permeabilized with 0.5% Triton. Primary incubation 1hr (10ug/ml) followed by Alexa Fluor 488® conjugated secondary antibody (1ug/ml). IgG control: Unimmunized goat IgG (black line) followed by Alexa Fluor 488 secondary antibody.