



UK Office

Everest Biotech Ltd

Cherwell Innovation Centre
77 Heyford Park
Upper Heyford
Oxfordshire
OX25 5HD
UK

Enquiries:

info@everestbiotech.com

Sales:

sales@everestbiotech.com

Tech support:

support@everestbiotech.com

Tel: +44 (0)1869 238326

Fax: +44 (0)1869 238327

US Office

Everest Biotech c/o Abcore

405 Maple Street, Suite A106
Ramona,
CA 92065
USA

Inquiries:

info@everestbiotech.com

Sales:

usasales@everestbiotech.com

Tech support:

support@everestbiotech.com

Tel: 888-320-4628 (toll-free)

Fax: 888-841-9041

www.everestbiotech.com

**Research Use Only. Not for
diagnostic or therapeutic use.**

EB07827 - Goat Anti-TGM2 Antibody

Size: 100µg specific antibody in 200µl



Target Protein

Principal Names: TGM2, transglutaminase 2 (C polypeptide, protein-glutamine-gamma-glutamyltransferase), TG2, TGC, C polypeptide, TGase C, TGase-H, protein-glutamine-gamma-glutamyltransferase, tissue transglutaminase, transglutaminase 2, transglutaminase C

Official Symbol: TGM2

Accession Number(s): NP_004604.2

Human GeneID(s): [7052](#)

Important Comments: This antibody is expected to recognise isoform a (NP_004604.2) only.

Immunogen

Peptide with sequence C-NFESDKLKAVKGFR, from the internal region (near the C Terminus) of the protein sequence according to NP_004604.2.

Please note the [peptide](#) is available for sale.

Purification and Storage

Purified from goat serum by ammonium sulphate precipitation followed by antigen affinity chromatography using the immunizing peptide.

Supplied at 0.5 mg/ml in Tris saline, 0.02% sodium azide, pH7.3 with 0.5% bovine serum albumin.

Aliquot and store at -20°C. Minimize freezing and thawing.

Applications Tested

Peptide ELISA: antibody detection limit dilution 1:128000.

Western blot: Approx 90kDa band observed in Human Lung lysates and approx 85kDa in lysates of cell line A549 (calculated MW of 77.3kDa according to NP_004604.2).

Recommended concentration: 0.03-0.1µg/ml.

IHC: Paraffin embedded Human Placenta. Recommended concentration: 5-10µg/ml.

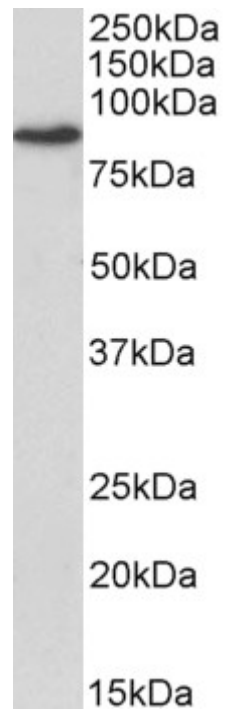
Species Reactivity

Tested: Human

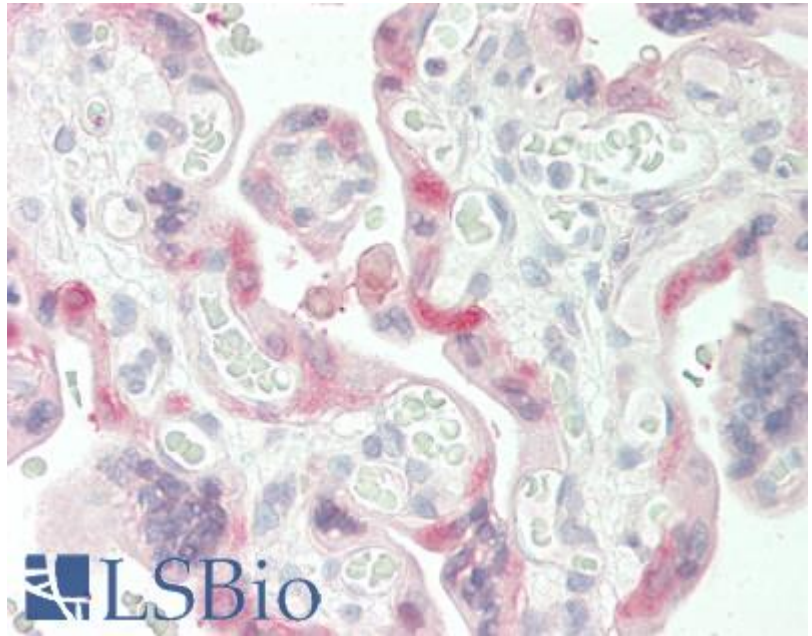
Expected from sequence similarity: Human



EB07827 (0.03 μ g/ml) staining of Human Lung lysate (35 μ g protein in RIPA buffer). Primary incubation was 1 hour. Detected by chemiluminescence.



EB07827 (0.1 μ g/ml) staining of A549 lysate (35 μ g protein in RIPA buffer). Primary incubation was 1 hour. Detected by chemiluminescence.



EB07827 (5µg/ml) staining of paraffin embedded Human Placenta. Steamed antigen retrieval with citrate buffer pH 6, AP-staining.