



International Office

Everest Biotech Ltd

Vector Laboratories, Inc.
6737 Mowry Ave
Newark, CA 94560
United States

Customer Service:

customerservice@vectorlabs.com

Technical Service:

technical@vectorlabs.com

Tel: +1 (800) 227-6666

www.everestbiotech.com

**Research Use Only. Not for
diagnostic or therapeutic use.**

EB09152 - Goat Anti-Thrombospondin Antibody

Size: 100µg specific antibody in 200µl



Target Protein

Principal Names: THBS1, thrombospondin 1, THBS, TSP, TSP1, thrombospondin-1p180

Official Symbol: THBS1

Accession Number(s): NP_003237.2

Human GeneID(s): [7057](#)

Immunogen

Peptide with sequence NRIPESGGDNSVFD-C, from the N Terminus of the protein sequence according to NP_003237.2.

Please note the [peptide](#) is available for sale.

Purification and Storage

Purified from goat serum by ammonium sulphate precipitation followed by antigen affinity chromatography using the immunizing peptide.

Supplied at 0.5 mg/ml in Tris saline, 0.02% sodium azide, pH7.3 with 0.5% bovine serum albumin.

Aliquot and store at -20°C. Minimize freezing and thawing.

Applications Tested

Peptide ELISA: antibody detection limit dilution 1:128000.

Western blot: Approx 150kDa band observed in Mouse Kidney lysates (calculated MW of 129kDa according to NP_035710.2). Recommended concentration: 0.3-1µg/ml. Primary incubation 1 hour at room temperature.

IHC: Paraffin embedded Human Spleen. Recommended concentration: 5µg/ml.

Immunofluorescence: Strong expression of the protein seen in the cytoplasm of HeLa and HepG2 cells. Recommended concentration: 10µg/ml.

Flow Cytometry: Flow cytometric analysis of A431 cells. Recommended concentration: 10ug/ml.

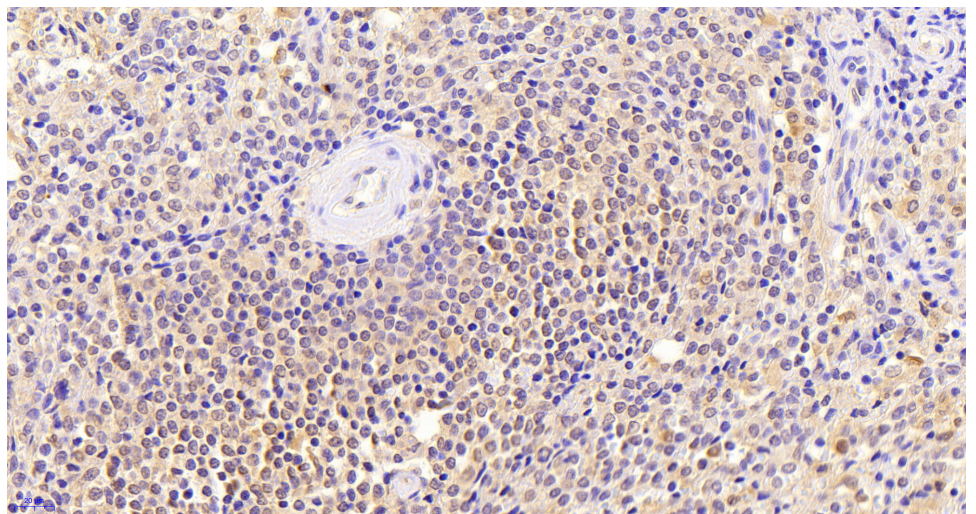
Species Reactivity

Tested: Human, Mouse

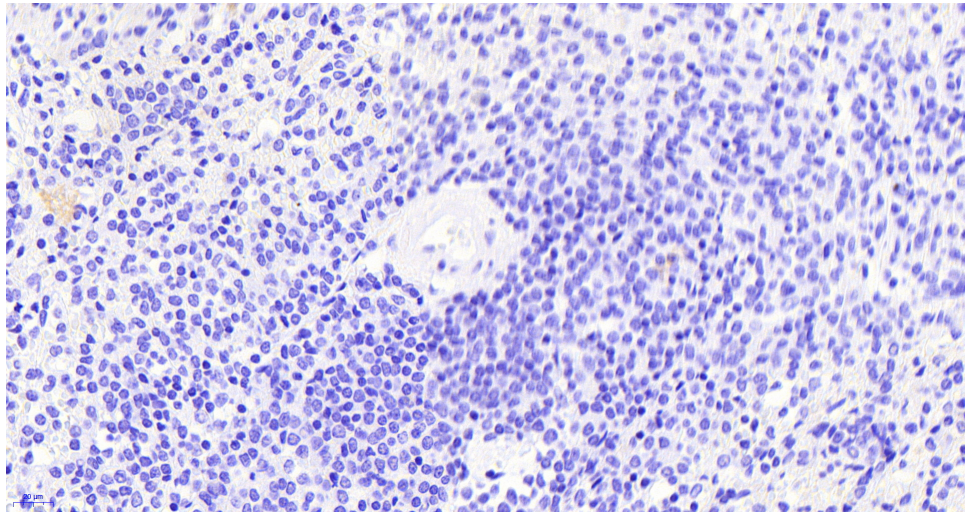
Expected from sequence similarity: Human, Mouse, Rat, Cow



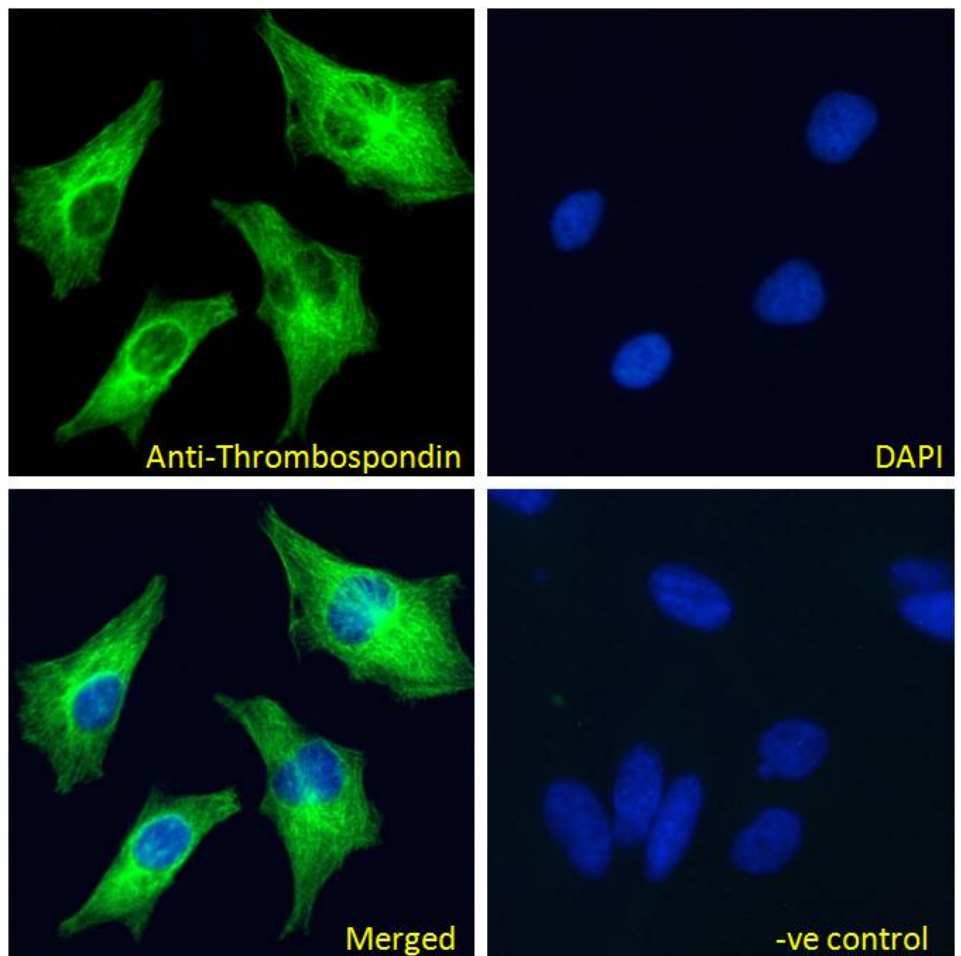
EB09152 (1 μ g/ml) staining of Mouse Kidney lysate (35 μ g protein in RIPA buffer). Detected by chemiluminescence.



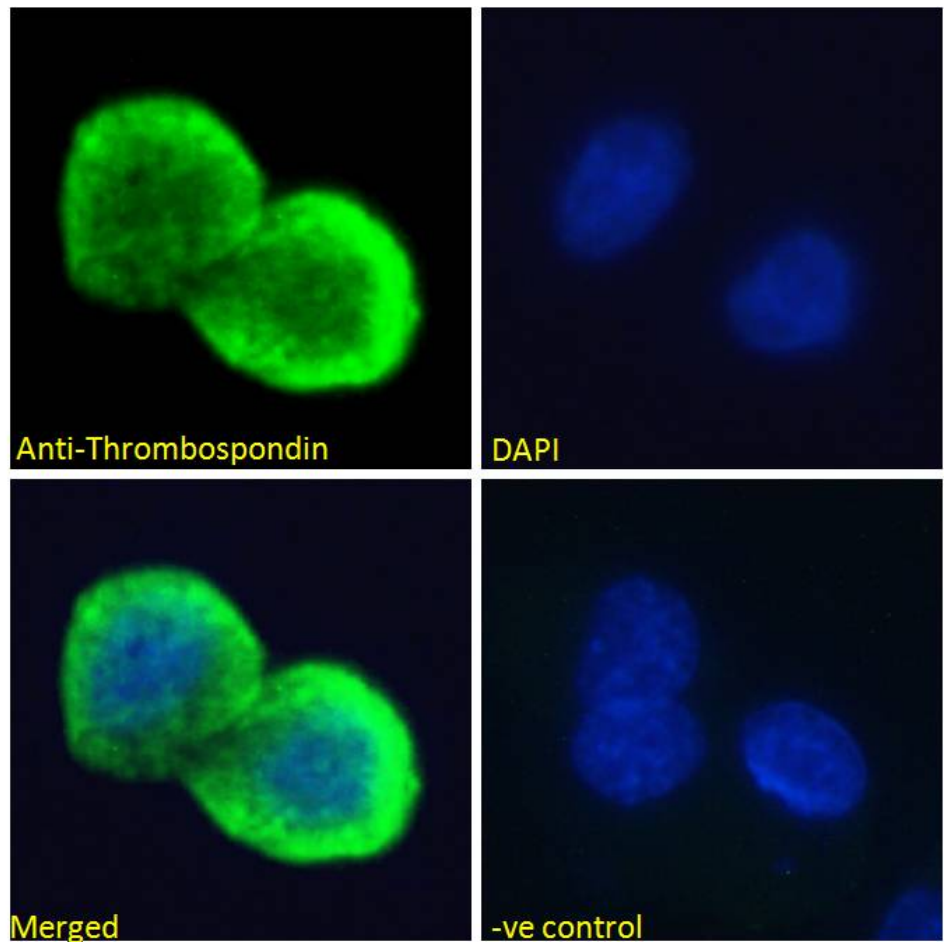
EB09152 (5 μ g/ml) staining of paraffin embedded Human Spleen. Heat induced antigen retrieval with citrate buffer pH 6, HRP-staining.



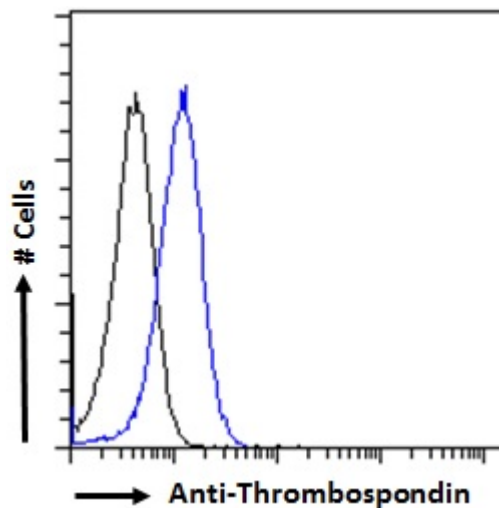
EB9152 Negative Control showing staining of paraffin embedded Human Spleen, with no primary antibody.



EB09152 Immunofluorescence analysis of paraformaldehyde fixed HeLa cells, permeabilized with 0.15% Triton. Primary incubation 1hr (10ug/ml) followed by Alexa Fluor 488 secondary antibody (4ug/ml), showing cytoplasmic staining. The nuclear stain is DAPI (blue). Negative control: Unimmunized goat IgG (10ug/ml) followed by Alexa Fluor 488 secondary antibody (4ug/ml).



EB09152 Immunofluorescence analysis of paraformaldehyde fixed HepG2 cells, permeabilized with 0.15% Triton. Primary incubation 1hr (10ug/ml) followed by Alexa Fluor 488 secondary antibody (4ug/ml), showing cytoplasmic/Plasma Membrane staining. The nuclear stain is DAPI (blue). Negative control: Unimmunized goat IgG (10ug/ml) followed by Alexa Fluor 488 secondary antibody (4ug/ml).



EB09152 Flow cytometric analysis of paraformaldehyde fixed A431 cells (blue line), permeabilized with 0.5% Triton. Primary incubation 1hr (10ug/ml) followed by Alexa Fluor 488 secondary antibody (2ug/ml). IgG control: Unimmunized goat IgG (black line) followed by Alexa Fluor 488 secondary antibody.